

UNITED STATES PUBLIC LAND SURVEY CORNER CERTIFICATE

OF

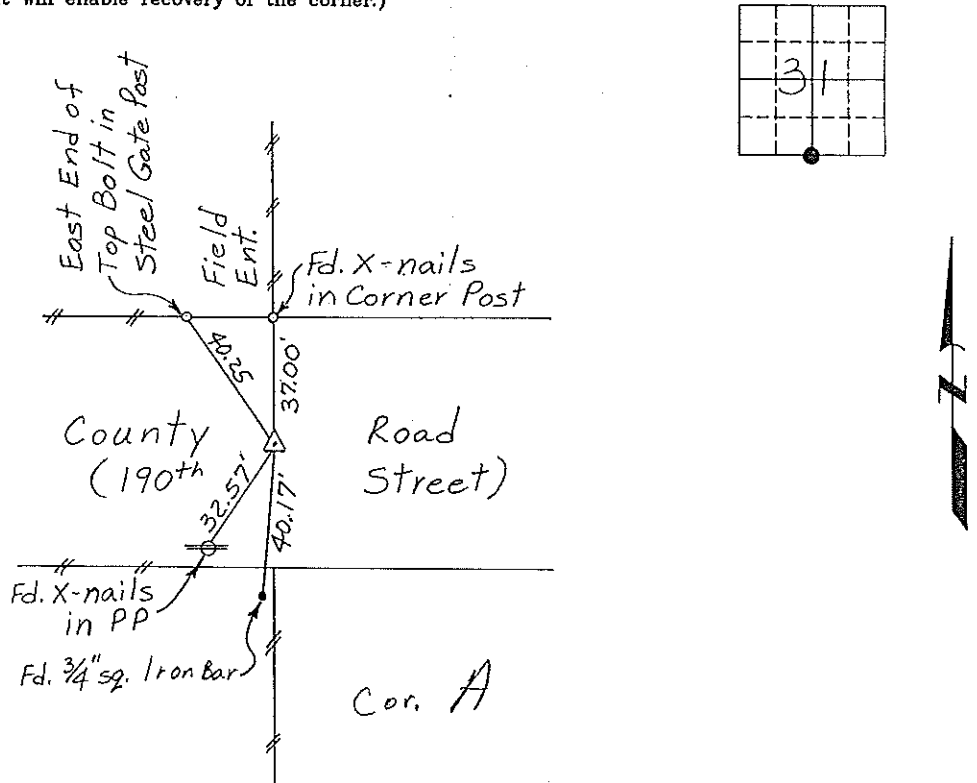
Land Survey Monuments situated in Section 31, Township 96 North, Range 14 West, of the Fifth Principal Meridian, CHICKASAW County, Iowa. Previously recorded in Deeds Bk. 156 pg. 239, Doc. # 00895 in County Recorder's Office. (book, page, document number, etc.)

(Show reason for preparing this certificate, the evidence and detailed procedures used in establishing the corner positions and monumentation found or placed.)

Monument Description and Remarks: 1/4 CORNER SECTION 31-T96N-R14W:
Found 5/8" φ Rebar. Refiled because dist. to ties had been omitted.

PLAN - VIEW

(Show a minimum of three reference ties to durable physical objects, relevant monuments and physical conditions that will enable recovery of the corner.)



I hereby certify that the survey work was completed and this certificate was prepared by me or under my direct personal supervision and that I am a duly registered land surveyor under the laws of the state of Iowa.

Signature: Gary L. Casady
Gary L. Casady

Date: 12-15-94 Reg. No. 12532
My Registration Renewal Date is December 31, 1994

Seal



List Corners to be Indexed			
Corners	Section	Twp.	Range
S/4	31	96N	14W

Corner A 31-96-14
Placed in tie Book
1/18/95