

UNITED STATES PUBLIC LAND SURVEY CORNER CERTIFICATE

OF

Land Survey Monuments situated in Section 32, Township 96 NORTH, Range 14 WEST, of the Fifth Principal Meridian, CHICKASAW County, Iowa. Previously recorded in NONE in County Recorder's Office.

(book, page, document number, etc.)

(Show reason for preparing this certificate, the evidence and detailed procedures used in establishing the corner positions and monumentation found or placed.)

Monument Description and Remarks: NW CORNER, SECTION 32-T96N-R14W:

Found 3/4" ϕ Rebar.

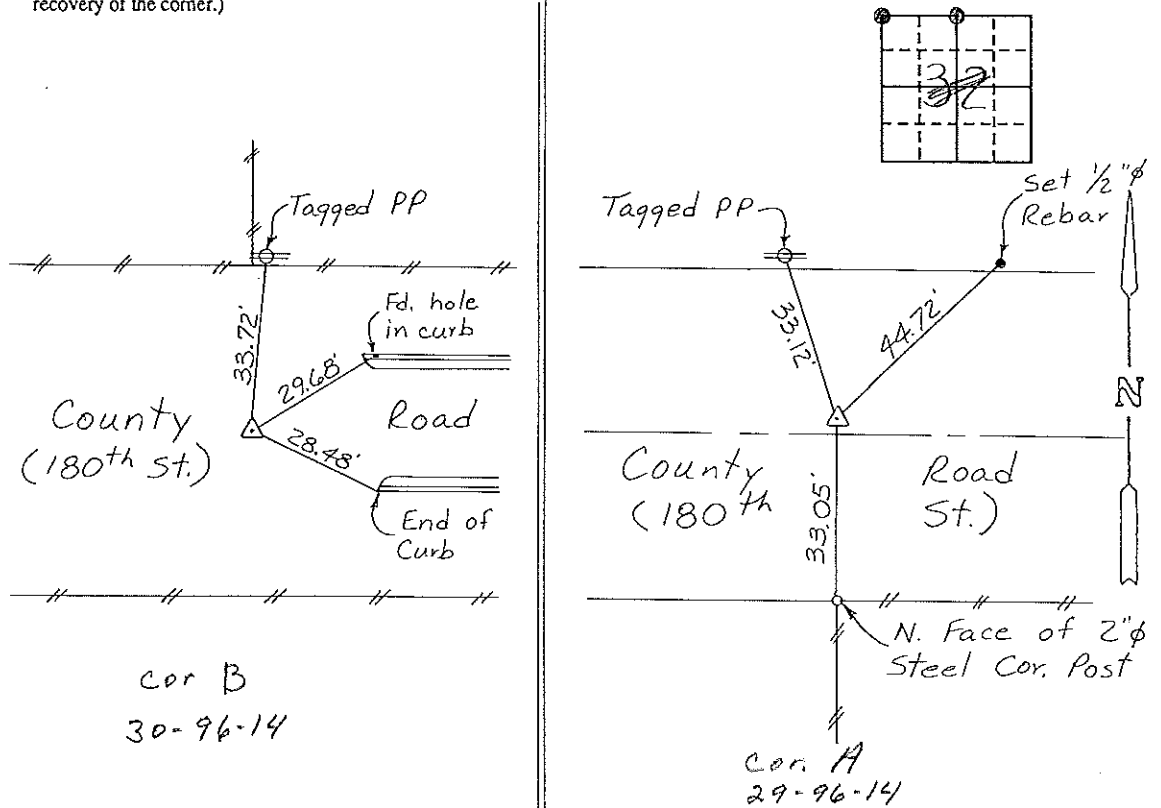
N 1/4 CORNER, SECTION 32-T96N-R14W: Found 3/4" ϕ

Rebar, 3' North of Traveled E.

Section 29-96-14
As referred to in
Engr. T.C. Book.

PLAN - VIEW

(Show a minimum of three reference ties to durable physical objects, relevant monuments and physical conditions that will enable recovery of the corner.)



NW CORNER, SECTION 32-T96N-R14W N 1/4 CORNER, SECTION 32-T96N-R14W

I hereby certify that the survey work was completed and this certificate was prepared by me or under my direct personal supervision and that I am a duly registered land surveyor under the laws of the state of Iowa.

Signature: Gary L. Casady
Name typed or printed: Gary L. Casady

Date: 8-25-93 Reg. No. 12532
My Registration Expires December 31, 1994

Corners	List Corners to be Indexed		
	Section	Twp	Range
NW Cor. B	32	96N	14W
	Section 30	96	14
N 1/4 Cor. A	32	96N	14W
	Section 29-96-14		

Placed in tee book 9/20/93

SEAL

