

STEVE BUSSE P.O. BOX 241 508 ELM ST. ALLISON, IOWA 50602 319-267-2519

UNITED STATES PUBLIC LAND SURVEY CORNER CERTIFICATE  
 OF 29

LAND SURVEY MONUMENTS SITUATED IN SECTION NO. 33, TOWNSHIP NO. 96 NORTH, RANGE  
 NO. 14 WEST OF THE FIFTH PRINCIPAL MERIDIAN, Chickasaw COUNTY, IOWA.  
 PREVIOUSLY RECORDED IN N/A

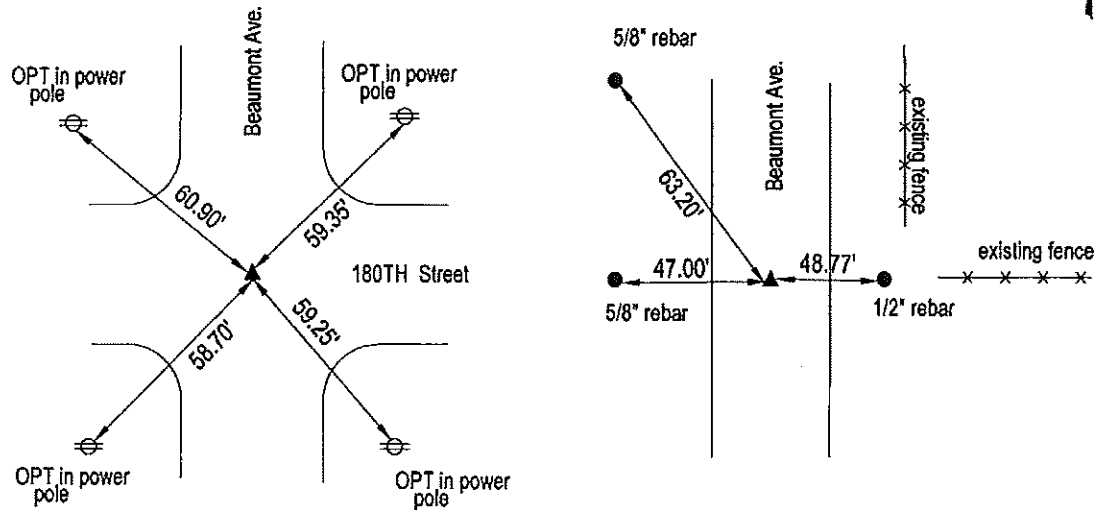
(SHOW REASON FOR PREPARING THIS CERTIFICATE, THE EVIDENCE AND DETAILED PROCEDURES USED IN ESTABLISHING THE  
 CORNER POSITIONS AND MONUMENTATION FOUND OR PLACED.)

MONUMENT DESCRIPTION AND REMARKS:

Preparing this as we found no certificate recorded for either corner at time of survey. At the Northwest corner County ties call for iron pin. We found 5/8" rebar with yellow plastic cap in center of intersection at corner. Could not read the number on the cap. At the West 1/4 corner County ties also called for iron pin. Searched area and found pin with alum. cap #19957. Used both of the corners in survey in section 33

PLAN VIEW

(SHOW A MINIMUM OF THREE REFERENCE TIES TO DURABLE PHYSICAL OBJECTS, RELEVANT MONUMENTS AND PHYSICAL  
 CONDITIONS THAT WILL ENABLE RECOVERY OF THE CORNER.)

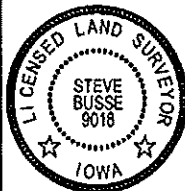


NORTHWEST CORNER

cor. B  
 29-96-14

WEST 1/4 CORNER

cor. C  
 32-96-14



I HEREBY CERTIFY THAT THIS LAND SURVEYING DOCUMENT  
 WAS PREPARED AND THE RELATED SURVEY WORK WAS  
 PERFORMED BY ME OR UNDER MY DIRECT PERSONAL  
 SUPERVISION AND THAT I AM A DULY LICENSED LAND  
 SURVEYOR UNDER THE LAWS OF THE STATE OF IOWA.

*Steve Busse* 10/31/11  
 STEVE BUSSE DATE

LICENSE NUMBER 9018  
 MY LICENSE RENEWAL DATE IS DECEMBER 31, 2012  
 PAGES OR SHEETS COVERED BY THIS SEAL 1

G.P. = 2" GAS PIPE  
 CONC MONU = CONCRETE MONUMENT W/ PIN & ALUM CAP  
 "X NAILS" = CROSS NAILS IN WOOD POST  
 OPT = PLASTIC TAG (O=ORANGE, Y=YELLOW)  
 (00) RECORDED AS

LIST CORNERS TO BE INDEXED

CORNER	SECTION	TOWNSHIP	RANGE
NORTHWEST COR.	33	96	14
WEST 1/4 COR.	33	96	14

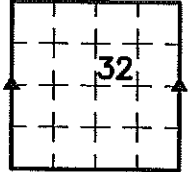
2011-2011

Zeb J. Stanbrough PLS, Ryken Engineering, 711 Park Avenue, Ackley, Iowa 50601 - Ph. 641-847-3273 - Fax 641-847-2303

**UNITED STATES PUBLIC LAND SURVEY CORNER CERTIFICATE**

OF 31

Land Survey Monuments situated in Section 32, Township 96 North, Range 14 West, of the Fifth Principal Meridian, Chickasaw County, Iowa, Previously recorded in Not Applicable in County Recorder's Office



These corners were used for a survey in this section for Summit Farms, LLC and RTS Farms, LLC. Basis of bearing for this corner cert. can be found on the associated plot of survey filed in the Co. Rec's Office for this section.

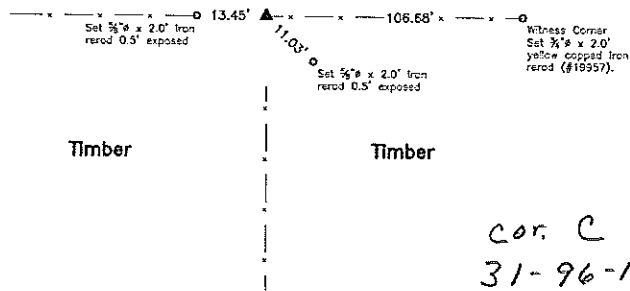
**Legend**

- BC = Nail with Bottle Cap
- BP = Brace Post
- CP = Corner Post
- CMP = Corrugated Metal Pipe
- CM = 4" Sq Concrete Monument with
- 1/2" Iron rod in center (tie to rerod)
- CX = Cut 'X'
- GP = Gate Post
- ID = Inside Diameter
- OD = Outside Diameter
- PP = Power Pole
- PW = Nail with Plastic Washer
- RCP = Reinforced Concrete Pipe
- RH = Red Head (Nail in wire)
- ROW = Right of Way
- RW = Nail with Reflective Round Washer
- R/W = Iron ROW Nail
- SFP = Steel 'T' Post
- SW = Nail with Square Metal Washer
- TP = Telephone Pedestal
- TW = Nail with Round Metal Washer
- WFP = Wood Fence Post
- X = X Nails



**W 1/4 Cor.**

Field



**Monument Description, Remarks, and Plan View:**

W 1/4 Cor. - History of Corner =

Current County Engineer's ties indicate that corner is monumented with "Stone" with no ties shown.

Corner Recovery =

Searched 20' area at record distance from the SW Corner along a straight line from the SW Corner to the NW Corner with metal detector and found nothing. Searched 4.0'(East-West) x 4.0'(North-South) area at said record distance with tile probe to 4'± deep and found nothing. Excavated 4.0'± x 1.0' deep hole around 2" O.D. steel corner post stamped "8x10" and "1914-0" with concrete at base and found nothing. Searched 4.0'± area around said corner post with tile probe to 4'± deep and found nothing. The northerly adjoining land owner stated the steel corner post has always been the section corner as long as he remembers. Therefore, since there is record that corner was set, there is verbal evidence that corner post is regarded as section corner, and location of corner post matches fence line evidence well, accepted center of 2" O.D. steel corner post stamped "8x10" and "1914-0" as the correct corner. Corner post is in-line with fence line remnants East-West and South. All ties are plumb distance unless indicated otherwise.

This certificate is being prepared because there are no certificates on file for this corner



I hereby certify that this land surveying document was prepared and the related survey work was performed by me or under my direct personal supervision and that I am a duly licensed Land Surveyor under the laws of the State of Iowa.

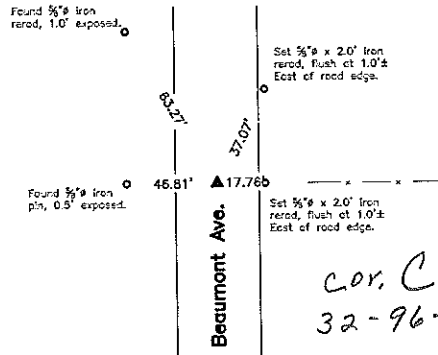
*Zeb J. Stanbrough PLS*  
 Zeb J. Stanbrough, PLS  
 Date: 11-10-2011 License number: 19957  
 My license renewal date is December 31, 2011  
 Pages or sheets covered by this seal: 1 & 2

**List Corners to be Indexed**

Corners	Section	Twp	Range
W 1/4 Cor.	32	T96N	R14W
E 1/4 Cor.	32	T96N	R14W

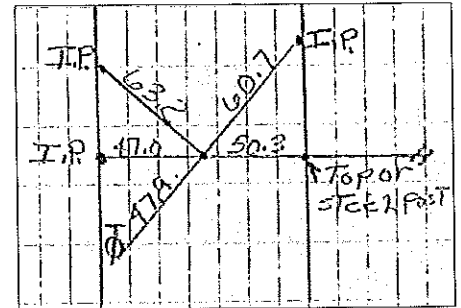
2011-2011

**E 1/4 Cor.**



cor. C  
32-96-14

**CO ENGR'S RECORD TIES**



**Monument Description, Remarks, and Plan View:**

E 1/4 Cor. - History of Corner =  
1986, Sep. 26 - "SET FROM COUNTY TIES" by Thomas V. Craft per County Recorder's Book 137, Page 8.  
1987, Nov. 2 - 'Fd. 3/8"Ø bar w/cop' by Lyle G. TeKippe per County Recorder's Book 139, Page 272.

Current County Engineer's ties do indicate that corner is monumented with: 'Stone & I.P. Rock 3 Ft. below Surface. Put 3' x 1/2" I. P. above.' In 1953.  
"Raised" on Apr. 7, 1958.  
"Found I.P. & Retied" on Jun. 18, 1962 with ties as

Corner Recovery =  
Searched 10'Ø area with metal detector, excavated 2' x 2' x 1.5' deep hole and found 3/8"Ø x 2.5' iron rered (bent) flush. Tied out straight portion of rered, removed, searched excavated hole with tile probe to 4'± deep and found nothing. Rered was in apparent centerline of traveled surface of gravel road North-South and in-line with fenceline East. Location of monument found matches that of record, monument found matches that of record, and record ties are within reason. Therefore, set 3/8"Ø x 4.0' aluminum capped iron rered (#19957) at straight portion of 3/8"Ø iron rered location, and used it as the correct corner. All ties are plumb distance unless indicated otherwise.

This certificate is being prepared because there are no certificates on file for this corner.

**Legend**

- |   |  |                                    |
|---|--|------------------------------------|
| BC = Nail with Bottle Cop                 | ID = Inside Diameter                   | R/W = Iron ROW Rail                |
| BP = Brace Post                           | OD = Outside Diameter                  | SFP = Steel 1" Post                |
| CP = Corner Post                          | PP = Power Pole                        | SW = Nail with Square Metal Washer |
| CMP = Corrugated Metal Pipe               | PW = Nail with Plastic Washer          | TP = Telephone Pedestal            |
| CM = 4" Sq Concrete Monument with         | RCP = Reinforced Concrete Pipe         | TW = Nail with Round Metal Washer  |
| 1/2"Ø iron rered in center (tie to rered) | RH = Red Head (Nail in wire)           | WFP = Wood Fence Post              |
| CX = Cut X                                | ROW = Right of Way                     | X = X Nails                        |
| GP = Gate Post                            | RW = Nail with Reflective Round Washer |                                    |

