

PREPARED BY : North Star Land Surveyors LLC, 107 Pine Street, New Hampton, IA 50659, Phone : 641-394-3448

**UNITED STATES PUBLIC LAND CORNER CERTIFICATE**

**OF:**

Land Survey Monuments situated in Section 32, Township 96 North, Range 14 West of the Fifth Principal Meridian, Chickasaw County, Iowa. Previously recorded in 1908 in Office of County Recorder.

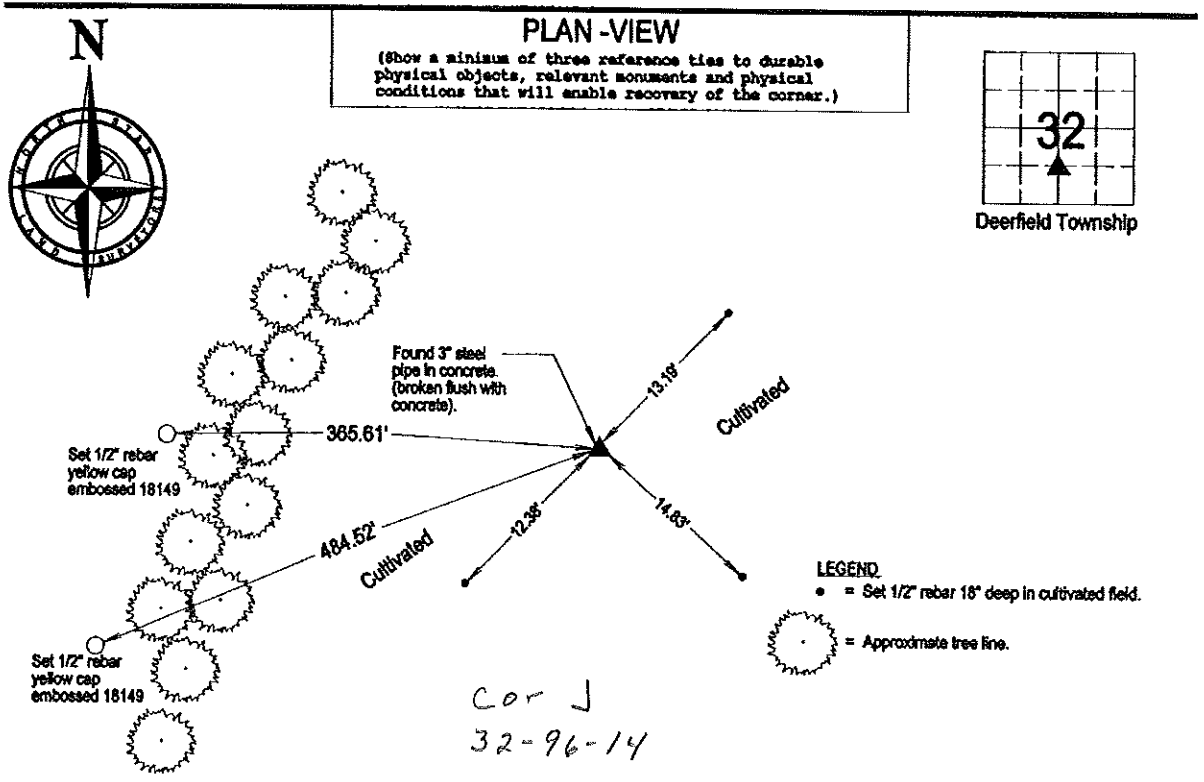
(book, page, document number, etc.)

(Show reason for preparing this certificate, the evidence and detailed procedures used in establishing the corner positions and monumentation found or placed.)

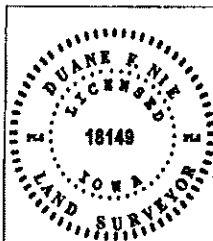
**Monument Description and Remarks :**

NW Corner SW1/4 SE1/4 Section 32, Twp. 96 N., Rng. 14 W.: County Engineer's record does not show a reference for this corner. Corner shown as found 3" steel post in concrete on plat recorded in book 139 page 272. Office of County Recorder. Found a 3" steel post broken off flush with concrete.

Reason for recording: Per Iowa Administrative Code 193C-12.2(2)a. Did not find Certificate on record.



NW Corner SW 1/4 SE 1/4 Section 32 Twp. 96 Rng. 14 W.



I hereby certify that this land surveying document was prepared and the related survey work was performed by me or under my direct personal supervision and that I am a duly LICENSED LAND SURVEYOR under the laws of the State of IOWA.

*Duane F. Nie* January 30, 2012  
 Duane F. Nie License number 18149 Date  
 My license renewal date is December 31, 2012  
 Pages or sheets covered by this seal. This page only

List Corners to be Indexed

Corner	Section	Township	Range
NW Cor. SW1/4 SE 1/4	32	96	14