

Prepared by & Return to: Herold - Recks Surveying, 10 East Main Street, New Hampton, IA 50659, Ph. 641-394-2725

UNITED STATES PUBLIC LAND SURVEY CORNER CERTIFICATE

Land Survey Monuments situated in Section 29, Township 96 North, Range 14 West of the Fifth Principal Meridian, Chickasaw County, Iowa. 1., 2.) Not previously recorded in the County Recorder's office.

This certificate is being prepared in compliance with Iowa Code Chapter 355.11 because:

- 1 & 2 There is no certificate on file for this corner.
 There are no longer three valid ties of record.
 There are changes to reference ties of record.
 There is change of monumentation of record.
 To clarify description of record monument (ties).

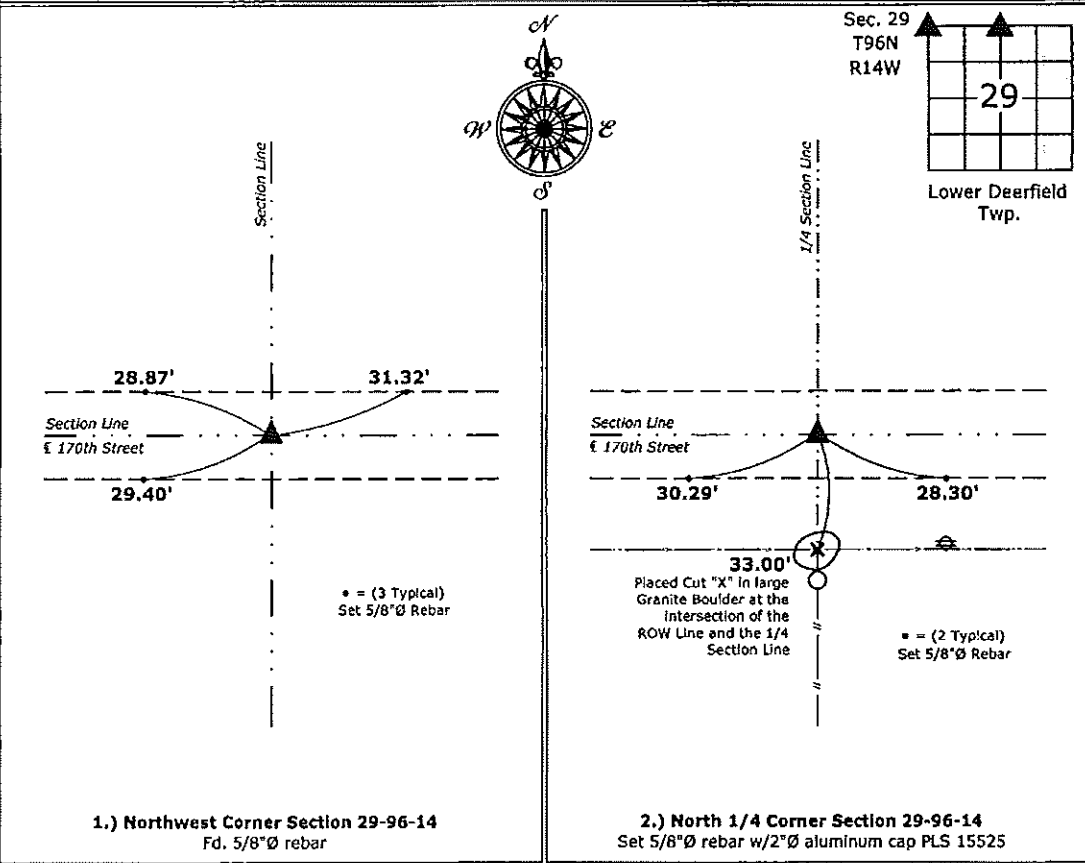
Monument Description and Remarks:

1.) Northwest Corner: Fd. 5/8"Ø rebar from information obtained from a Survey and Plat made by Terry D. Van Laningham, recorded on July 11, 2007 in Document #2007-1421, on file in the Chickasaw County Recorder's office, New Hampton, Iowa.

2.) North 1/4 Corner: Set 5/8"Ø rebar w/2"Ø aluminum cap PLS 15525 at the intersection of a possession line fence to the South and the Centerline of 170th Street.

PLAN - VIEW

(Show a minimum of three reference ties to durable physical objects, relevant monuments and physical conditions that will enable recovery of the corner.)



1.) Northwest Corner Section 29-96-14
 Fd. 5/8"Ø rebar

2.) North 1/4 Corner Section 29-96-14
 Set 5/8"Ø rebar w/2"Ø aluminum cap PLS 15525



I hereby certify that this land surveying document was prepared and the related survey work was performed by me or under my direct personal supervision and that I am a duly licensed Land Surveyor under the laws of the State of Iowa.

Paul R. Herold 8-26-14
 Paul R. Herold Date:
 License number 15525
 My license renewal date is December 31, 2014.
 Sheets covered by this seal: Individual sheet only

List Corners to be Indexed

Corners	Section	Twp.	Range
NW	29	96	14
N 1/4	29	96	14

Project Number: 2014-155

FB: Chickasaw County 7, Pgs. 1-5

Chickasaw Co. Recorder
 Cindy Messersmith
 Fee Book 2011-1964
 11/07/2011 @09:36AM
 SCC SEC COR CERT # Pages: 1
 Book: Page: \$7.00
 Total Fees:

STEVE BUSSE P.O. BOX 241 508 ELM ST. ALLISON, IOWA 50602 319-267-2519

UNITED STATES PUBLIC LAND SURVEY CORNER CERTIFICATE
 OF 29

LAND SURVEY MONUMENTS SITUATED IN SECTION NO. 33, TOWNSHIP NO. 96 NORTH, RANGE
 NO. 14 WEST OF THE FIFTH PRINCIPAL MERIDIAN, Chickasaw COUNTY, IOWA.
 PREVIOUSLY RECORDED IN N/A

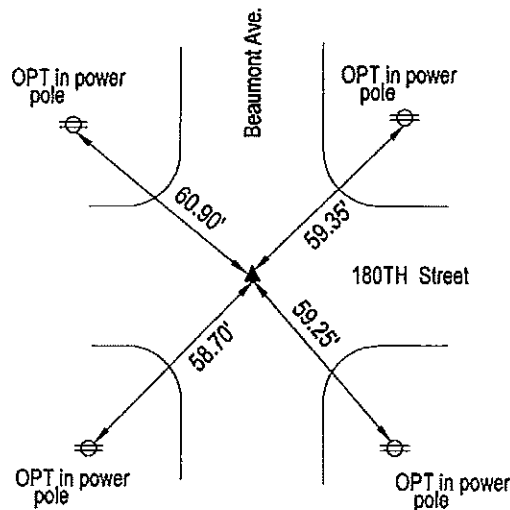
(SHOW REASON FOR PREPARING THIS CERTIFICATE, THE EVIDENCE AND DETAILED PROCEDURES USED IN ESTABLISHING THE
 CORNER POSITIONS AND MONUMENTATION FOUND OR PLACED.)

MONUMENT DESCRIPTION AND REMARKS:

Preparing this as we found no certificate recorded for either corner at time of survey. At the Northwest corner County ties call for iron pin. We found 5/8" rebar with yellow plastic cap in center of intersection at corner. Could not read the number on the cap. At the West 1/4 corner County ties also called for iron pin. Searched area and found pin with alum. cap #19957. Used both of the corners in survey in section 33

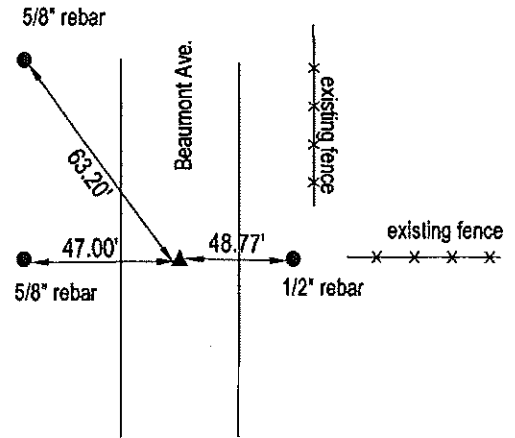
PLAN VIEW

(SHOW A MINIMUM OF THREE REFERENCE TIES TO DURABLE PHYSICAL OBJECTS, RELEVANT MONUMENTS AND PHYSICAL CONDITIONS THAT WILL ENABLE RECOVERY OF THE CORNER.)



NORTHWEST CORNER

cor. B
 29-96-14



WEST 1/4 CORNER

cor. C
 32-96-14



I HEREBY CERTIFY THAT THIS LAND SURVEYING DOCUMENT WAS PREPARED AND THE RELATED SURVEY WORK WAS PERFORMED BY ME OR UNDER MY DIRECT PERSONAL SUPERVISION AND THAT I AM A DULY LICENSED LAND SURVEYOR UNDER THE LAWS OF THE STATE OF IOWA.

Steve Busse 10/31/11
 STEVE BUSSE DATE

LICENSE NUMBER 9018
 MY LICENSE RENEWAL DATE IS DECEMBER 31, 2012
 PAGES OR SHEETS COVERED BY THIS SEAL 1

G.P. = 2" GAS PIPE
 CONC MONU = CONCRETE MONUMENT W/ PIN & ALUM CAP
 "X NAILS" = CROSS NAILS IN WOOD POST
 OPT = PLASTIC TAG (O=ORANGE, Y=YELLOW)
 (00) RECORDED AS

LIST CORNERS TO BE INDEXED

CORNER	SECTION	TOWNSHIP	RANGE
NORTHWEST COR.	33	96	14
WEST 1/4 COR.	33	96	14