

Chickasaw Co. Recorder
 Cindy Messersmith
Fee Book 2008-0170
 01/29/2008 8:03:55PM
 SCC SEC COR CERT
 Book: Page: # Pages: 1
 Total Fees: \$7.00

Section 34-96-14
 As referred to in
 Engr. Tie Book

Herold - Recks Surveying, 25 1/2 East Main Street, Suite 204, New Hampton, IA 50659, Ph. 641-394-2725

UNITED STATES PUBLIC LAND SURVEY CORNER CERTIFICATE

Land Survey Monuments situated in:
 Section 35, Township 96 North, Range 14 West of the Fifth Principal Meridian,
Chickasaw County, Iowa. Previously recorded in None
(book, page, document number, etc.)
 in County Recorder's Office.

(Show reason for preparing this certificate, the evidence and detailed procedures used in establishing the corner positions and monumentation found or placed.)

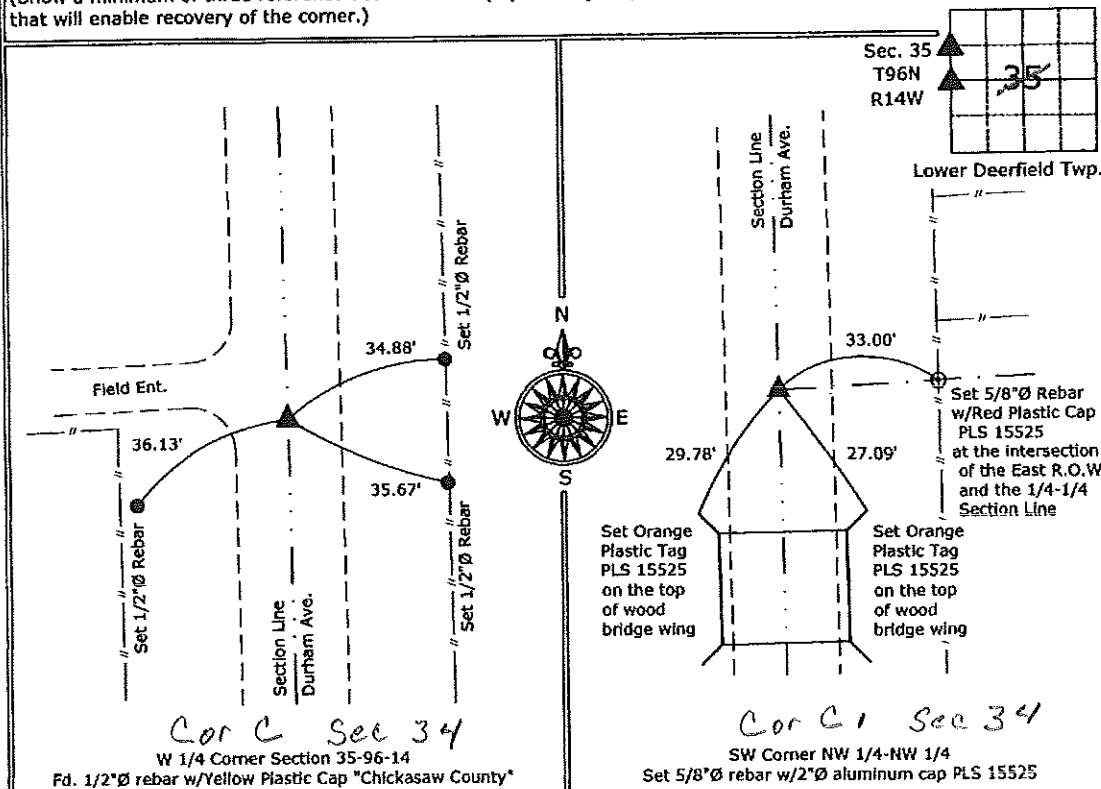
Monument Description and Remarks:

W 1/4 Corner Section 35-96-14, Fd. 1/2"Ø rebar w/Yellow Plastic Cap "Chickasaw County" from information obtained from the County Engineer's Office in Field Book Lower Deerfield Twp. Corner Ties, Section 34, Corner "C".

SW Corner NW 1/4-NW 1/4, Set 5/8"Ø rebar w/2"Ø aluminum cap PLS 15525, equidistant and on line between the W 1/4 Corner and the NW Corner.

PLAN - VIEW

(Show a minimum of three reference ties to durable physical objects, relevant monuments and physical conditions that will enable recovery of the corner.)



File: S:\Projects\2007\2007-121.dwg, 1/25/2008 10:08:56 AM



I hereby certify that this land surveying document was prepared and the related survey work was performed by me or under my direct personal supervision and that I am a duly licensed Land Surveyor under the laws of the State of Iowa.

Paul R. Herold 1-28-08
 Paul R. Herold Date:
 License number 15525
 My license renewal date is December 31, 2008.
 Sheets covered by this seal: Individual sheet only

List Corners to be Indexed			
Corners	Section	Twp.	Range
W 1/4	35	96	14
SW-NW-NW	35	96	14

Project Number: 2007-121
 FB: Chickasaw County 1, Pgs. 53-55