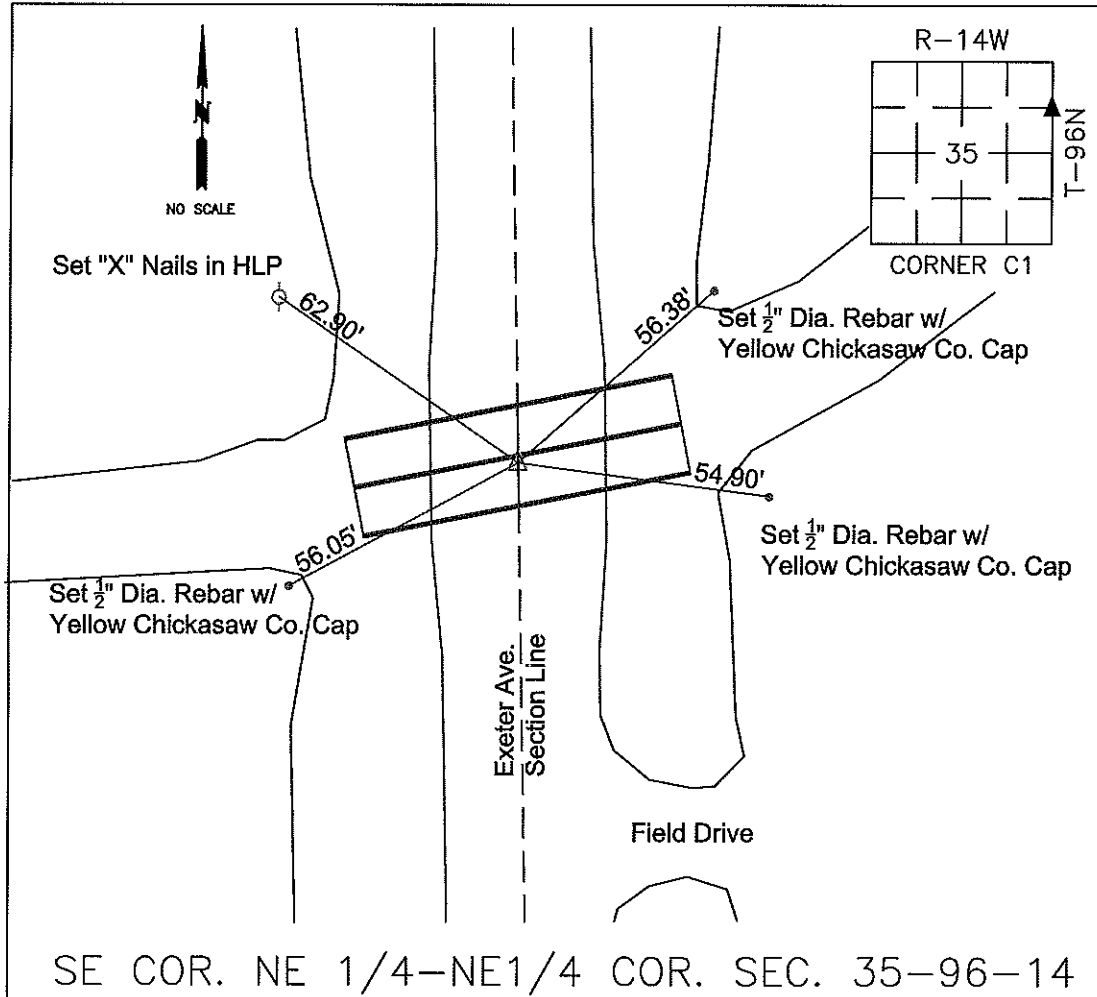


COUNTY ENGINEER'S SECTION CORNER PRESERVATION RECORD

LAND SURVEY MONUMENT LOCATED IN SECTION 35, TOWNSHIP 96 N
NORTH, RANGE 14 W, OF THE 5TH P.M. Chickasaw COUNTY, IOWA
PREVIOUSLY RECORDED FILE 2008-0171



MONUMENT DESCRIPTION AND NARRATIVE Previous Section Corner (5/8" Dia. Rebar w/ 2"

Aluminum Cap - PLS15525) was removed during bridge replacement (Former FHWA BR#112945, Current FHWA
BR#112946). Set 1/2" Dia. Rebar w/ yellow Chickasaw Co. Cap in position of previous Section Corner.

All ties are GPS surveyed.

I AM NOT A REGISTERED LAND SURVEYOR UNDER THE LAWS OF THE STATE OF IOWA

ROMAN LENSING CHICKASAW COUNTY DATE: 10/03/2018

Herold - Recks Surveying, 25 1/2 East Main Street, Suite 204, New Hampton, IA 50659, Ph. 641-394-2725

UNITED STATES PUBLIC LAND SURVEY CORNER CERTIFICATE

Land Survey Monuments situated in:
 Section 35, Township 96 North, Range 14 West of the Fifth Principal Meridian,
Chickasaw County, Iowa. Previously recorded in None
 in County Recorder's Office. (book, page, document number, etc.)

(Show reason for preparing this certificate, the evidence and detailed procedures used in establishing the corner positions and monumentation found or placed.)

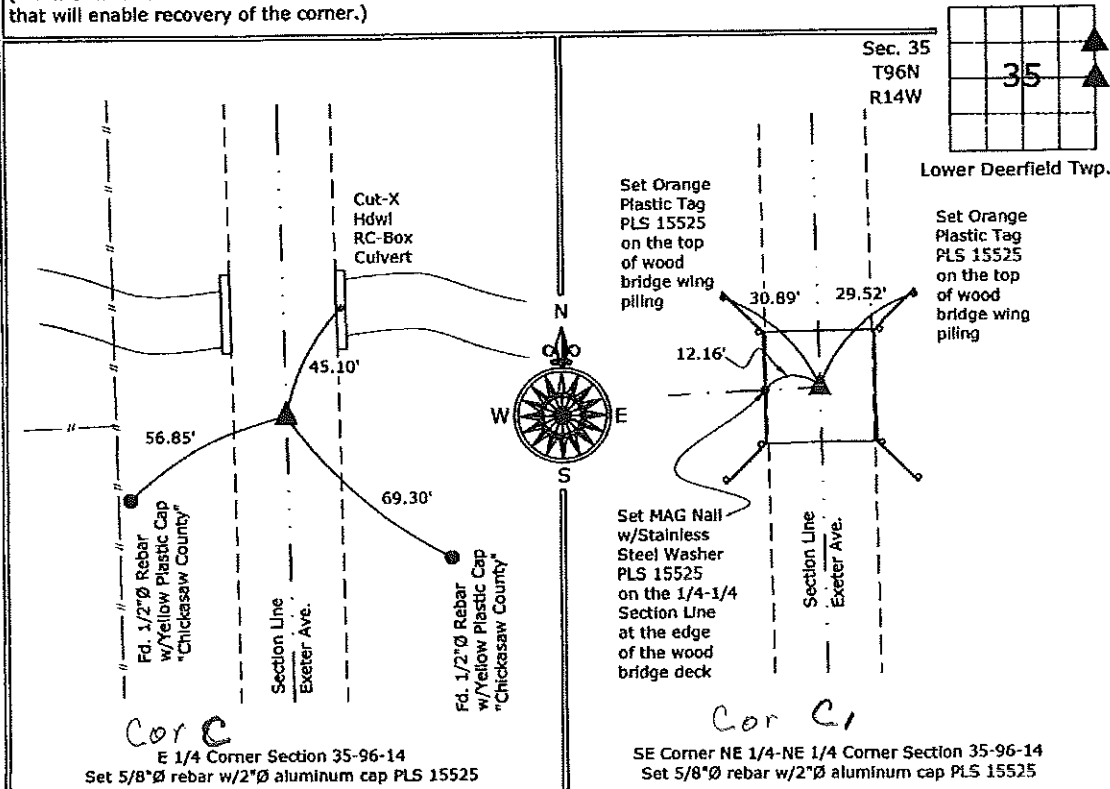
Monument Description and Remarks:

E 1/4 Corner Section 35-96-14: Set 5/8"Ø rebar w/2"Ø aluminum cap PLS 15525 from the 2 remaining ties obtained from the County Engineer's Office in Field Book Lower Deerfield Twp. Corner Ties, Section 35, Corner "C"

SE Corner NE 1/4-NE 1/4, Section 35-96-14: Set 5/8"Ø rebar w/2"Ø aluminum cap PLS 15525, equidistant and on line between the E 1/4 Corner and the NE Corner.

PLAN - VIEW

(Show a minimum of three reference ties to durable physical objects, relevant monuments and physical conditions that will enable recovery of the corner.)



Cor C
 E 1/4 Corner Section 35-96-14
 Set 5/8"Ø rebar w/2"Ø aluminum cap PLS 15525

Cor C1
 SE Corner NE 1/4-NE 1/4 Corner Section 35-96-14
 Set 5/8"Ø rebar w/2"Ø aluminum cap PLS 15525



I hereby certify that this land surveying document was prepared and the related survey work was performed by me or under my direct personal supervision and that I am a duly licensed Land Surveyor under the laws of the State of Iowa.
Paul R. Herold 1-28-08
 Paul R. Herold Date:
 License number 15525
 My license renewal date is December 31, 2008.
 Sheets covered by this seal: Individual sheet only

List Corners to be Indexed			
Corners	Section	Twp.	Range
E 1/4	35	96	14
SE-NE-NE	35	96	14

Project Number: 2007-121
 FB: Chickasaw County 1, Pgs. 53-55

File: S:_Projects\2007-121.dwg, 1/25/2008 10:08:40 AM