

STEVE BUSSE P.O. BOX 241 508 ELM STREET ALLISON, IOWA 50602 319-267-2519

**UNITED STATES PUBLIC LAND SURVEY CORNER CERTIFICATE**

Land Survey Monuments situated in Section 26, Township 96 North, Range 14 West, of the Fifth Principal Meridian, Chickasaw County, Iowa.

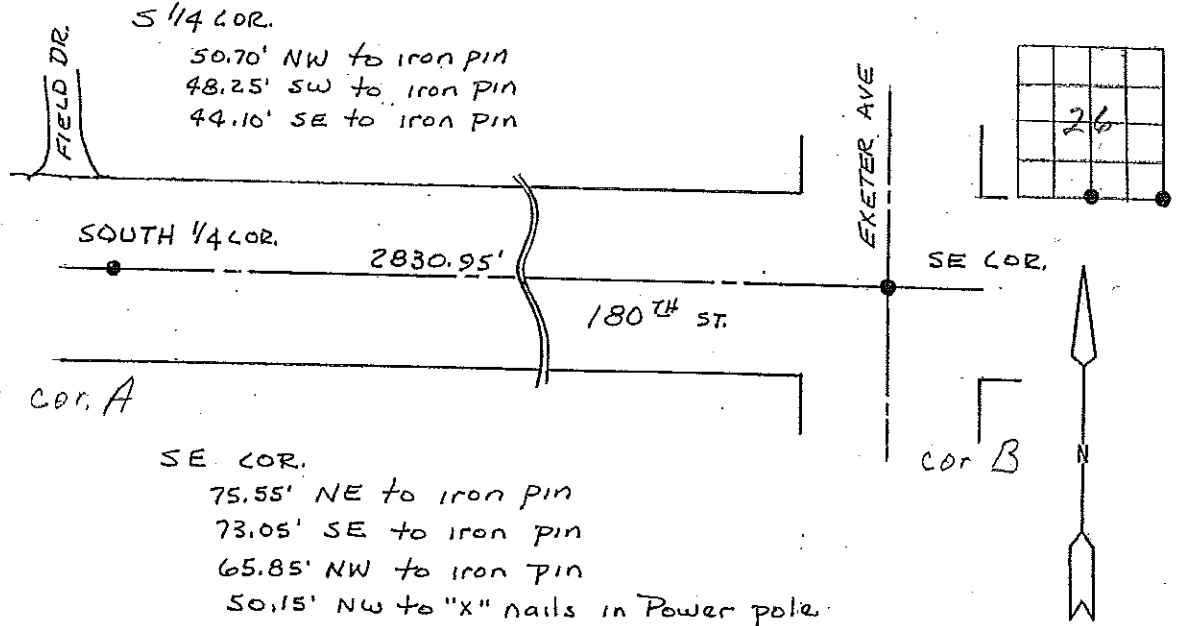
Previously recorded in N/A In County Recorder's Office.  
(book, page, document number, etc.)

(Show reason for preparing this certificate, the evidence and detailed procedures used in establishing the corner positions and monumentation found or placed.)

Monument Description and Remarks: FOUND SQUARE IRON PIN BESIDE SPIKE WITH RIBBON AT SOUTH 1/4 COR. USED SQUARE IRON PIN.  
FOUND SPIKE WITH RIBBON OVER IRON PIN AT SOUTH EAST CORNER.

**PLAN - VIEW**

(Show a minimum of three reference ties to durable physical objects, relevant monuments and physical conditions that will enable recovery of the corner)



I hereby certify that the survey work was completed and this land surveying document was prepared by me or under my direct personal supervision and that I am a duly licensed land surveyor under the laws of the state of Iowa

Signature: Steve Busse  
 Name typed or printed: STEVE BUSSE  
 Date: 11/2/01 Reg. No. 9018  
 My license renewal date is December 31, 2002  
 SEAL

Corners	List Corners to be Indexed		
	Section	Twp	Range
S 1/4 COR.	26	96	14
SE COR.	26	96	14

Filed 12-11-01