

FILED 2003-2546
 RECORDER'S OFFICE
 CHICKASAW COUNTY, IOWA
 2003 AUG 12 ^{fee 11.00} PM 4 07
 CINDY MESSERSMITH
 COUNTY RECORDER
 ALLISON, IOWA 50602

STEVE BUSSE P.O. BOX 241 508 ELM STREET ALLISON, IOWA 50602 219-267-2519

UNITED STATES PUBLIC LAND SURVEY CORNER CERTIFICATE

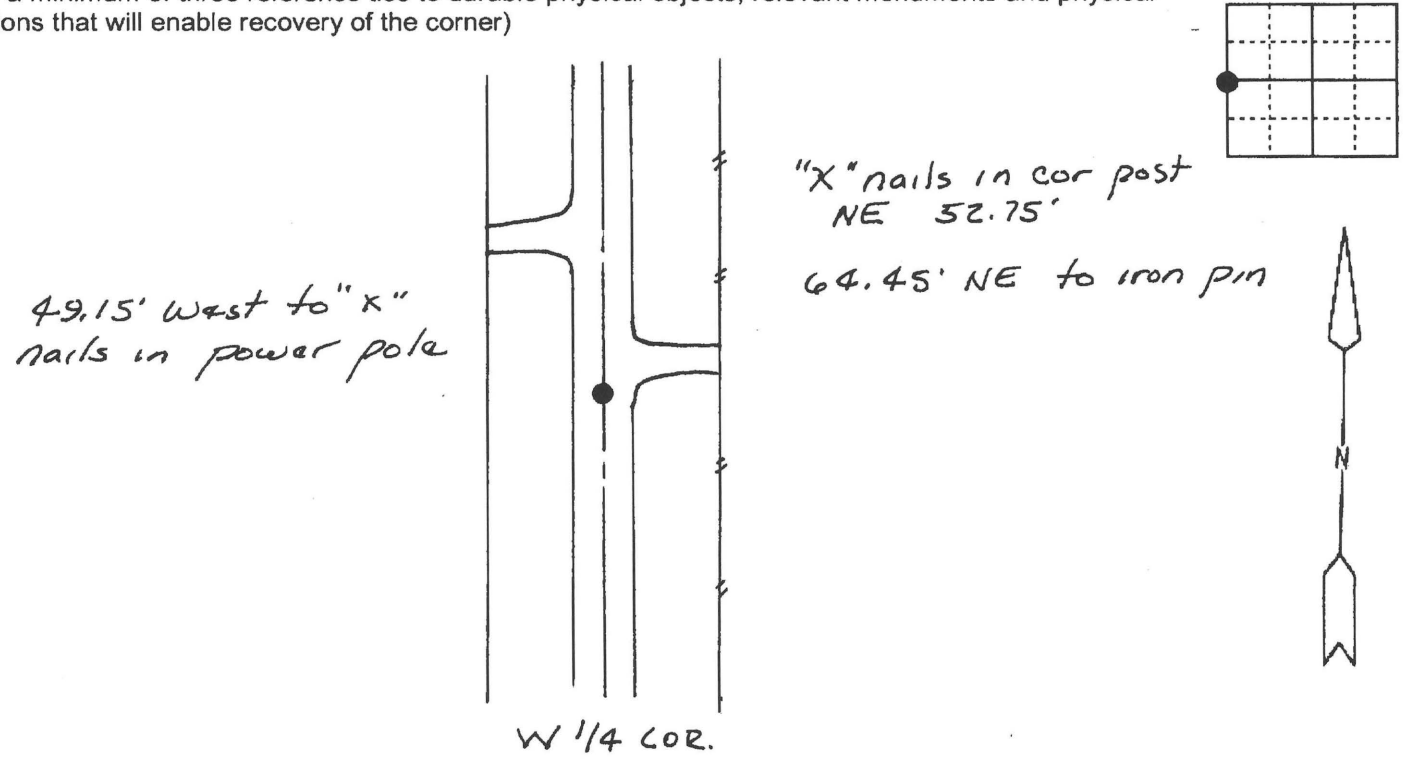
Land Survey Monuments situated in Section: 3 Township 96 North
 Range: 14 West Of the Fifth Principal Meridian, Chickasaw County, Iowa.
 Previously recorded in N/A In County Recorder's Office.

(Show reason for preparing this certificate, the evidence and detailed procedures used in establishing the corner positions and monumentation found or placed.)

Monument Description and Remarks: Found "PK" nail in paving in center of road. Nail fit ties from County Engineers office.

PLAN - VIEW

(Show a minimum of three reference ties to durable physical objects, relevant monuments and physical conditions that will enable recovery of the corner)



I hereby certify that the survey work was completed and this land surveying document was prepared by me or under my direct personal supervision and that I am a duly licensed land surveyor under the laws of the state of Iowa.

Signature: Steve Busse
 Name: typed or printed STEVE BUSSE

Date: 8/4/03 Reg. No. 9018

My license renewal date is December 31, 2004

Corners	List Corners to be Indexed		
	Section	Twp	Range
WEST 1/4 COR	3	96	14

SEAL