

PREPARED BY: WRAY CHILDERS, 215 N ADAMS, MASON CITY, IOWA 50401, 515-424-6344

## UNITED STATES PUBLIC LAND SURVEY CORNER CERTIFICATE OF

Land Survey Monuments situated in Section 5, Township 96 NORTH, Range 14 WEST, of the Fifth Principal Meridian, CHICKASAW County, Iowa  
 Previously recorded in DOES NOT APPLY in County Recorder's Office.  
(book, page, document number, etc.)

Monument Description and Remarks: NO CERTIFICATES OF RECORD FOR THESE CORNERS.

W 1/4 CORNER - FOUND 5/8" PIN USING CHICKASAW COUNTY ENGINEERING DEPT.

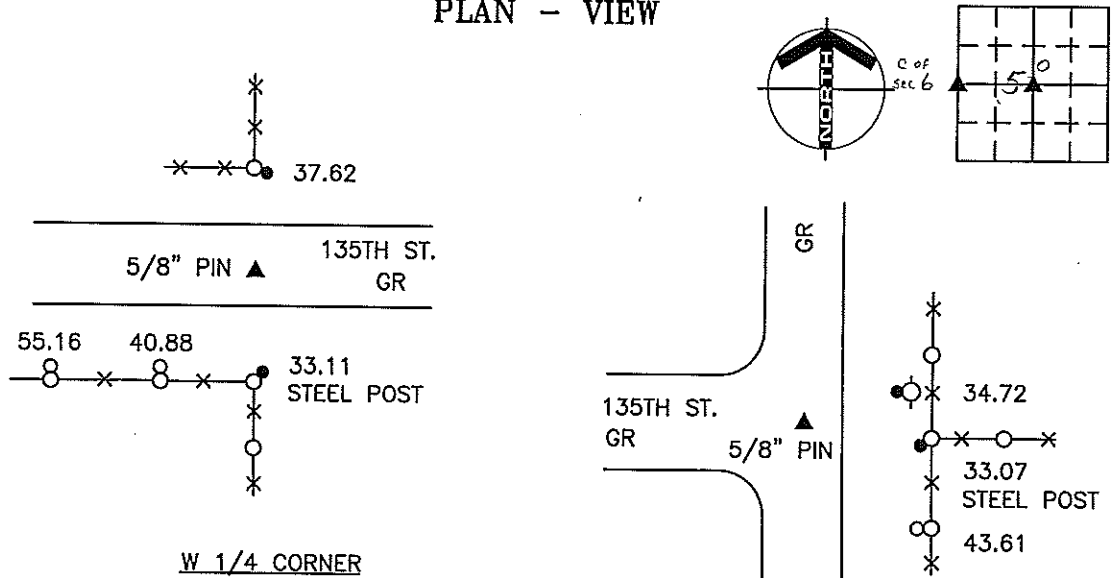
REFERENCE TIES.

SET ADDITIONAL TIES AS SHOWN.

CENTER OF SECTION - FOUND 5/8" PIN USING CHICKASAW COUNTY ENGINEERING DEPT.

REFERENCE TIES. SET ADDITIONAL TIE AS SHOWN.

### PLAN - VIEW



*Cor. C  
6-96-14*

CENTER OF SECTION

*Cor. O  
5-96-14*

**LEGEND**

- UTILITY POLE
- EXISTING FENCE, FENCE POST
- FOUND LAND CORNER
- SET LAND CORNER
- FOUND 'X' NAILS
- SET REFERENCE TIES ARE A BRASS DISK STAMPED RLS 11306 UNLESS NOTED
- SRP- SURVEY REFERENCE POINT
- ACC- ASPHALT CEMENT CONCRETE SURFACING
- PCC- PORTLAND CEMENT CONCRETE SURFACING
- GR- GRAVEL SURFACING

ENGINEERS • ARCHITECTS  
 SURVEYORS • PLANNERS  
 LANDSCAPE ARCHITECTS  
 215 NORTH ADAMS  
 MASON CITY, IOWA 50401  
 515-424-6344  
 FAX 515-424-0351

FILE 961405

I HEREBY CERTIFY THAT THIS LAND SURVEYING DOCUMENT WAS PREPARED BY ME OR UNDER MY DIRECT PERSONAL SUPERVISION AND THAT I AM A DULY LICENSED LAND SURVEYOR UNDER THE LAWS OF THE STATE OF IOWA.

*Wray Childers*  
 WRAY CHILDERS  
 DATE: 2/15/00 LICENSE NO. 11306  
 MY LICENSE RENEWAL DATE IS DECEMBER 31, 2001

Corners	List Corners to be Indexed	Section	Twp	Range
W 1/4	5	96N	14W	
CENTER	5	96N	14W	

*Placed in tie book 2-10-00*

SEAL PROJECT NO. 4647