

FILED 2003-2546  
 RECORDER'S OFFICE  
 CHICKASAW COUNTY, IOWA  
 2003 AUG 12 PM 4 07

STEVE BUSSE P.O. BOX 241 508 ELM STREET ALLISON, IOWA 50512 219-267-2519  
 CINDY MESSERSMITH COUNTY RECORDER

UNITED STATES PUBLIC LAND SURVEY CORNER CERTIFICATE

Land Survey Monuments situated in Section: 34 Township 96 North  
 Range: 14 West Of the Fifth Principal Meridian, Chickasaw County, Iowa.  
 Previously recorded in N/A In County Recorder's Office.

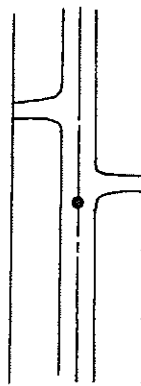
(Show reason for preparing this certificate, the evidence and detailed procedures used in establishing the corner positions and monumentation found or placed.)

Monument Description and Remarks: Found "PK" nail in paving in center of road. Nail fit ties from County Engineers office.

PLAN - VIEW

(Show a minimum of three reference ties to durable physical objects, relevant monuments and physical conditions that will enable recovery of the corner)

Section 4-96-14  
 As referred to in  
 Engr. Tie Book.



"X" nails in cor post  
 NE 52.75'  
 64.45' NE to iron pin

COR. C  
 4-96-14

I hereby certify that the survey work was completed and this land surveying document was prepared by me or under my direct personal supervision and that I am a duly licensed land surveyor under the laws of the state of Iowa.

Signature: Steve Busse  
 Name typed or printed: STEVE BUSSE

Date: 8/4/03 Reg. No. 9018

My license renewal date is December 31, 2004

SEAL

Corners	List Corners to be Indexed		
	Section	Twp	Range
West 1/4 COR	3	96	14