

# 2016-1198

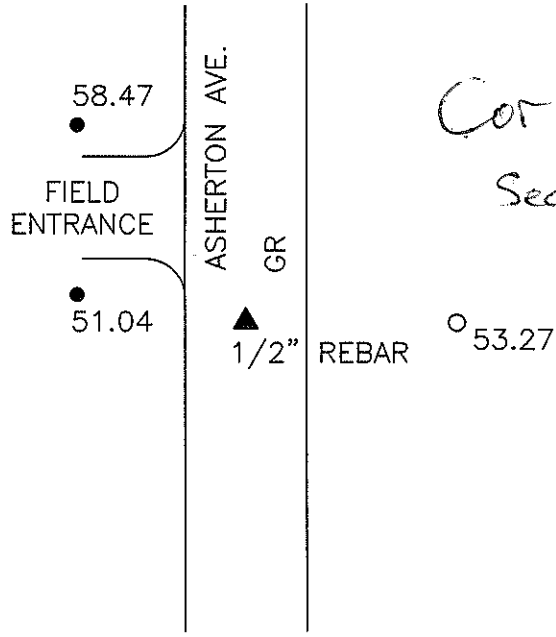
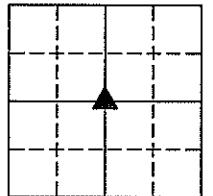
PREPARED BY: DARYL EIFFLER, 215 N ADAMS, MASON CITY, IOWA 50401, 641-424-6344

### UNITED STATES PUBLIC LAND SURVEY CORNER CERTIFICATE OF

Land Survey Monuments situated in Section 7, Township 96 NORTH, Range 14 WEST, of the Fifth Principal Meridian, CHICKASAW County, Iowa  
Previously recorded in DOES NOT APPLY in County Recorder's Office.  
(book, page, document number, etc.)

Monument Description and Remarks: NO CERTIFICATE OF RECORD FOR THIS CORNER.  
CENTER OF SECTION - FOUND 1/2" REBAR 0.3' DOWN IN CENTERLINE GRAVEL ROAD  
USING COUNTY TIE SHEET.  
  
FOUND AND SET ADDITIONAL TIES AS SHOWN.

#### PLAN - VIEW



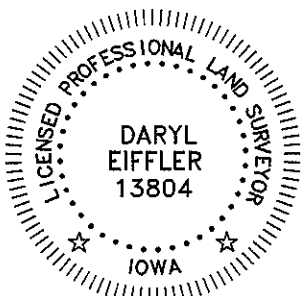
CENTER OF SECTION

#### LEGEND

- - UTILITY POLE
- X—○—X— - EXISTING FENCE, FENCE POST
- ▲ - FOUND LAND CORNER
- △ - SET LAND CORNER
- - FOUND 1/2" REBAR, YPC #13804
- - SET 5/8" REBAR
- HMA- HOT MIX ASPHALT SURFACING
- PCC- PORTLAND CEMENT CONCRETE SURFACING
- SRP- SURVEY REFERENCE POINT
- GR- GRAVEL SURFACING
- YPC- YELLOW PLASTIC CAP
- (00.00)- RECORDED DISTANCE

PROJECT NO. 12273

FILE 961407



I HEREBY CERTIFY THAT THIS LAND SURVEYING DOCUMENT WAS PREPARED AND THE RELATED SURVEY WORK WAS PERFORMED BY ME OR UNDER MY DIRECT PERSONAL SUPERVISION AND THAT I AM A DULY LICENSED PROFESSIONAL LAND SURVEYOR UNDER THE LAWS OF THE STATE OF IOWA.

FOR SEH  
Daryl Eiffler 9/6/16  
DARYL EIFFLER DATE  
LICENSE NUMBER 13804

MY LICENSE RENEWAL DATE IS DECEMBER 31, 2016  
SHEETS COVERED BY THIS SEAL: 1

List Corners to be Indexed  
Corners Section Twp Range  
CTR OF 7 96N 14W  
SECTION

215 NORTH ADAMS  
MASON CITY, IOWA 50401  
641-424-6344

