

Chickasaw Co. Recorder
 Cindy Messersmith
Fee Book 2009-1101
 05/29/2009 @12:12PM
 SCC SEC COR CERT
 Book: Page: # Pages: 1
 Total Fees: \$7.00

Cor. C
 7-96-14
 As referred to
 in Engr. Tie Book

Herold - Reicks Surveying, 25 1/2 East Main Street, Suite 204, New Hampton, IA 50659, Ph. 641-394-2725

UNITED STATES PUBLIC LAND SURVEY CORNER CERTIFICATE

Land Survey Monuments situated in Section 8, Township 96 North, Range 14 West of the Fifth Principal Meridian, Chickasaw County, Iowa. Previously not recorded in the County Recorder's office.

This certificate is being prepared in compliance with Iowa Code Chapter 355.11 because:

- There is no certificate on file for this corner.
- There are no longer three valid ties of record.
- There are changes to reference ties of record.
- There is change of monumentation of record.
- To clarify description of record monument (ties).

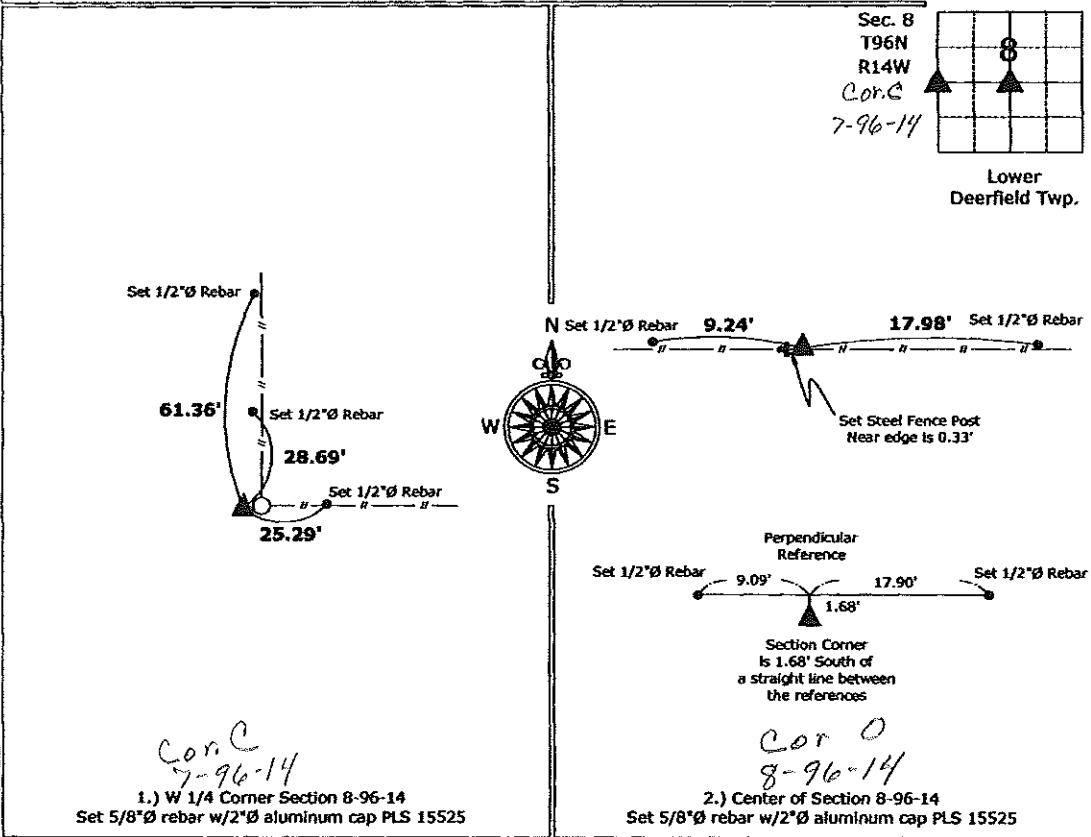
Monument Description and Remarks:

1.) W 1/4 Corner Section 8-96-14: Set 5/8"Ø rebar w/2"Ø aluminum cap PLS 15525 at the record distance from the NW Corner, this distance (2621.45') was shown on a survey and plat made by Harlan K. Schuck, recorded January 31, 2002, Document #2002-0331, on this survey it was indicated that the corner was set, there was no monument found and there was no section corner certificate filed for this corner, there are no other records of the perpetuation of a monument at this position, the distance places the corner at an existing fence corner and the position is consistent with the lines of ownership, therefore accepted the position as the corner and monumented said position.

2.) Center of Section 8-96-14: Set 5/8"Ø rebar w/2"Ø aluminum cap PLS 15525 at the intersection of the Quarter Section Lines.

PLAN - VIEW

(Show a minimum of three reference ties to durable physical objects, relevant monuments and physical conditions that will enable recovery of the corner.)



I hereby certify that this land surveying document was prepared and the related survey work was performed by me or under my direct personal supervision and that I am a duly licensed Land Surveyor under the laws of the State of Iowa.
Paul R. Herold 5-22-09
 Paul R. Herold Date:
 License number 15525
 My license renewal date is December 31, 2010.
 Sheets covered by this seal: Individual sheet only

List Corners to be Indexed			
Corners	Section	Twp.	Range
W 1/4	8	96	14
Center	8	96	14

Project Number: 2009-052
 FB: Chickasaw County 2, Pgs. 12-14

File: S:\Projects\2009\2009-052\dwg\2009-052.dwg, 5/22/2009 03:21:06