

2016-1199

PREPARED BY: DARYL EIFFLER, 215 N ADAMS, MASON CITY, IOWA 50401, 641-424-6344

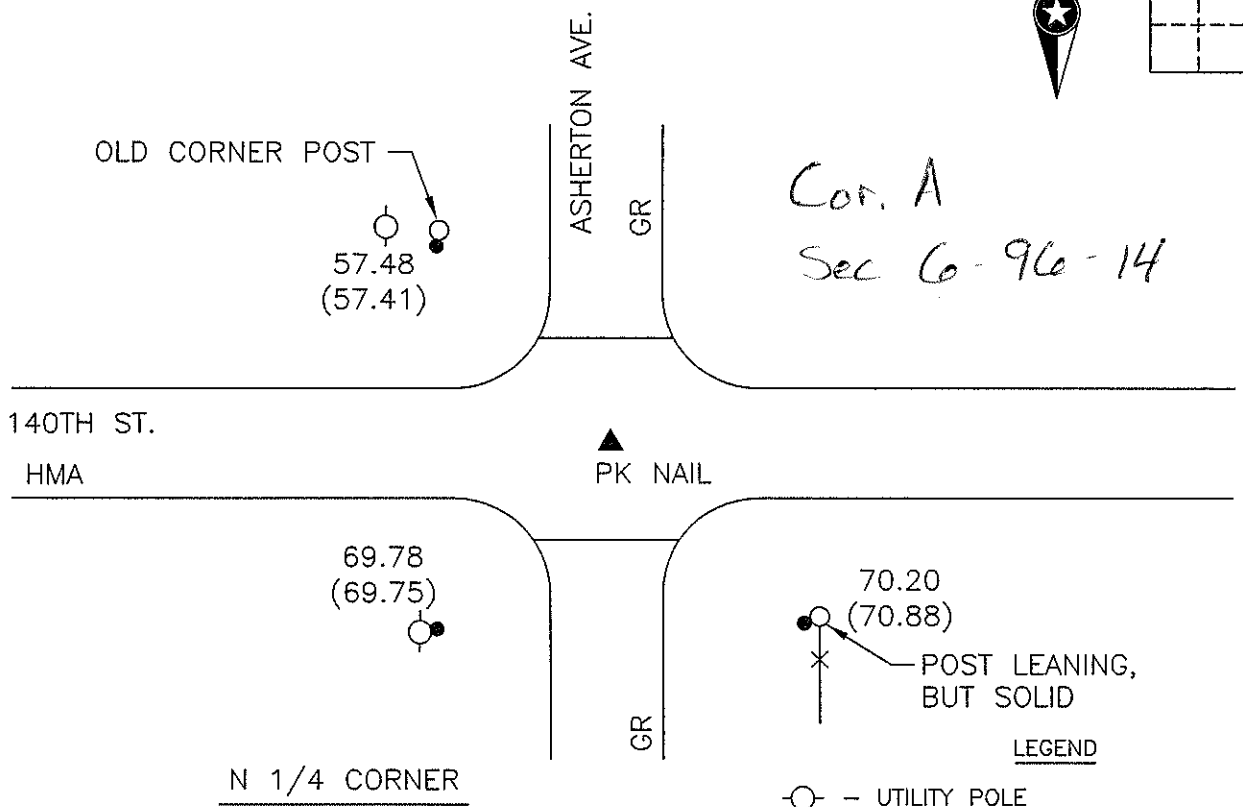
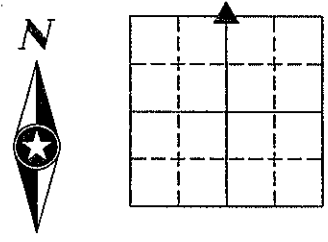
UNITED STATES PUBLIC LAND SURVEY CORNER CERTIFICATE OF

Land Survey Monuments situated in Section 7, Township 96 NORTH, Range 14 WEST, of the Fifth Principal Meridian, CHICKASAW County, Iowa
Previously recorded in DOES NOT APPLY in County Recorder's Office.
(book, page, document number, etc.)

Monument Description and Remarks: NO CERTIFICATE OF RECORD FOR THIS CORNER.
N 1/4 CORNER - FOUND PK NAIL 0.5' NORTH OF CENTERLINE, FLUSH, USING COUNTY TIES.

FOUND TIES AS SHOWN.

PLAN - VIEW



Cor. A
Sec 6-96-14

- LEGEND
- - UTILITY POLE
 - ⊗ - EXISTING FENCE, FENCE POST
 - ▲ - FOUND LAND CORNER
 - △ - SET LAND CORNER
 - - FOUND "X" NAILS
 - - SET 5/8" REBAR
 - HMA - HOT MIX ASPHALT SURFACING
 - PCC - PORTLAND CEMENT CONCRETE SURFACING
 - SRP - SURVEY REFERENCE POINT
 - GR - GRAVEL SURFACING
 - YPC - YELLOW PLASTIC CAP
 - (00.00) - RECORDED DISTANCE

PROJECT NO. 12273

FILE 961407



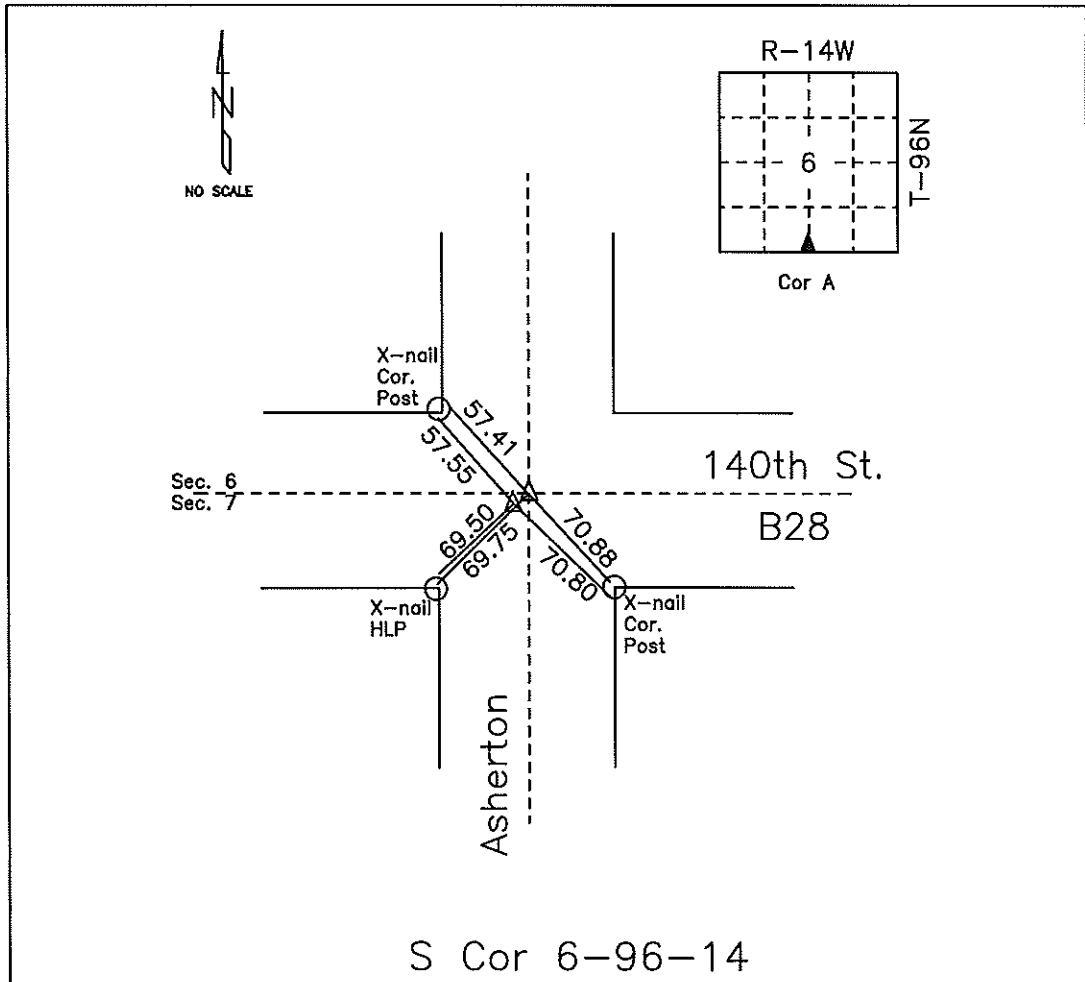
I HEREBY CERTIFY THAT THIS LAND SURVEYING DOCUMENT WAS PREPARED AND THE RELATED SURVEY WORK WAS PERFORMED BY ME OR UNDER MY DIRECT PERSONAL SUPERVISION AND THAT I AM A DULY LICENSED PROFESSIONAL LAND SURVEYOR UNDER THE LAWS OF THE STATE OF IOWA.

FOR SEH

List Corner to be Indexed
Corners N 1/4 Range

COUNTY ENGINEER'S SECTION CORNER PRESERVATION RECORD

LAND SURVEY MONUMENT LOCATED IN SECTION 06, TOWNSHIP 96 N
 NORTH, RANGE 14 W, OF THE 5TH P.M. Chickasaw COUNTY, IOWA
 PREVIOUSLY RECORDED COUNTY ENGINEER'S OFFICE



MONUMENT DESCRIPTION AND NARRATIVE Set PK-Nails 05/19/09. Previously recorded in
 Chickasaw County Engineers Tie Book as corner A in section 6-96-14. Also see project LC-370--73-19,
 station 23+61.3.

All ties are slope chained

I AM NOT A REGISTERED LAND SURVEYOR UNDER THE LAWS OF THE STATE OF IOWA

JIM FOSTER CHICKASAW CO. DATE: 05/19/09