

Chickasaw Co. Recorder
 Cindy Messersmith
Fee Book 2009-1097
 05/29/2009 @12:01PM
 SCC SEC COR CERT
 Book: Page: # Pages: 1
 Total Fees: \$7.00

Cor. A
 5-96-14
 As referred to
 in Engr. Tie Book

Herold - Reicks Surveying, 25 1/2 East Main Street, Suite 204, New Hampton, IA 50659, Ph. 641-394-2725

UNITED STATES PUBLIC LAND SURVEY CORNER CERTIFICATE

Land Survey Monuments situated in Section 8, Township 96 North, Range 14 West of the Fifth Principal Meridian, Chickasaw County, Iowa. Both previously recorded in Bk. 2000, Pg. 0243 in the County Recorder's office.

This certificate is being prepared in compliance with Iowa Code Chapter 355.11 because:

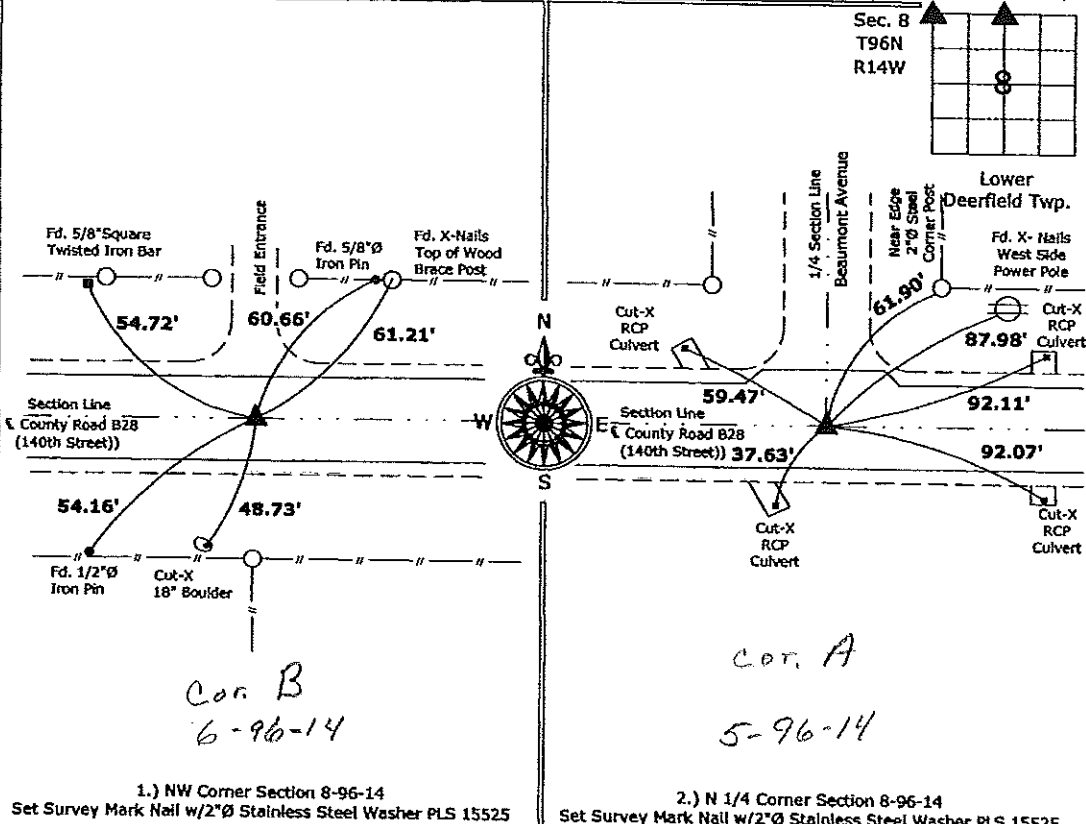
- There is no certificate on file for this corner.
- There are no longer three valid ties of record.
- 1.) & 2.) There are changes to reference ties of record.
- 1.) & 2.) There is change of monumentation of record.
- 1.) & 2.) To clarify description of record monument (ties).

Monument Description and Remarks:

- 1.) NW Corner Section 8-96-14, Fd. a PK Nail prior to HMA overlay, set Survey Mark Nail w/2"Ø Stainless Steel Washer PLS 15525 after construction was completed.
- 2.) N 1/4 Corner Section 8-96-14, Fd. a PK Nail prior to HMA overlay, set Survey Mark Nail w/2"Ø Stainless Steel Washer PLS 15525 after construction was completed.

PLAN - VIEW

(Show a minimum of three reference ties to durable physical objects, relevant monuments and physical conditions that will enable recovery of the corner.)



1.) NW Corner Section 8-96-14
 Set Survey Mark Nail w/2"Ø Stainless Steel Washer PLS 15525

2.) N 1/4 Corner Section 8-96-14
 Set Survey Mark Nail w/2"Ø Stainless Steel Washer PLS 15525



I hereby certify that this land surveying document was prepared and the related survey work was performed by me or under my direct personal supervision and that I am a duly licensed Land Surveyor under the laws of the State of Iowa.

Paul R. Herold 5-22-09
 Paul R. Herold Date:

License number 15525
 My license renewal date is December 31, 2010.
 Sheets covered by this seal: Individual sheet only

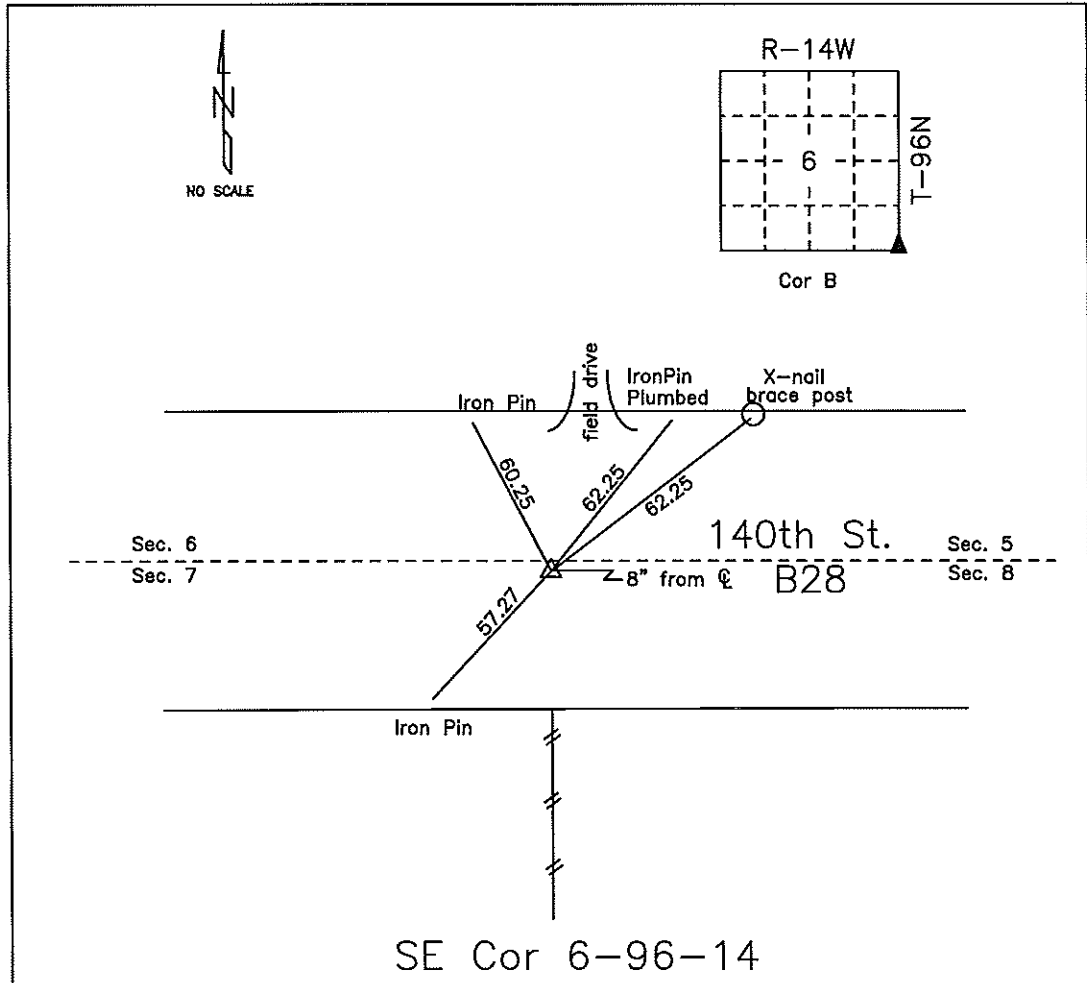
List Corners to be Indexed			
Corners	Section	Twp.	Range
NW	8	96	14
N 1/4	8	96	14

Project Number: 2009-052
 FB: Chickasaw County 2, Pgs. 12-14

S:\Projects\2009\2009-052.dwg, 5/19/2009 09:27:49

COUNTY ENGINEER'S SECTION CORNER PRESERVATION RECORD

LAND SURVEY MONUMENT LOCATED IN SECTION 06, TOWNSHIP 96 N
NORTH, RANGE 14 W, OF THE 5TH P.M. Chickasaw COUNTY, IOWA
PREVIOUSLY RECORDED COUNTY ENGINEER'S OFFICE



MONUMENT DESCRIPTION AND NARRATIVE Set PK-Nail 05/19/09. Previously recorded by
Yaggy Colby Associates as n/w corner of section 8-T96N-R14W in Bk 2000 pg 0243. See also project
LC-370--73-19, station 50+27.3

All ties are slope chained except Northeast Iron Pin.

I AM NOT A REGISTERED LAND SURVEYOR UNDER THE LAWS OF THE STATE OF IOWA

JIM FOSTER CHICKASAW CO. DATE: 05/19/09

DOCUMENT No. 0243 FILED FOR RECORD THE 8th DAY OF February 2000 AT 8:30 O'CLOCK A. M. BOOK 2000 PAGE 0243 By Cindy Messersmith Recorder
 STATE OF IOWA, CHICKASAW COUNTY.
 RECORDING FEE \$ 6.00
 TRANSFER FEE \$ -

PREPARED BY: WRAY CHILDERS, 215 N ADAMS, MASON CITY, IOWA 50401, 515-424-6344

Section 5-96-14
 As referred to in
 Eng. Tie Book.

UNITED STATES PUBLIC LAND SURVEY CORNER CERTIFICATE OF

Land Survey Monuments situated in Section 8 5, Township 96 NORTH, Range 14 WEST, of the Fifth Principal Meridian, CHICKASAW County, Iowa
 Previously recorded in DOES NOT APPLY in County Recorder's Office.
 (book, page, document number, etc.)

Monument Description and Remarks: NO CERTIFICATES OF RECORD FOR THESE CORNERS.

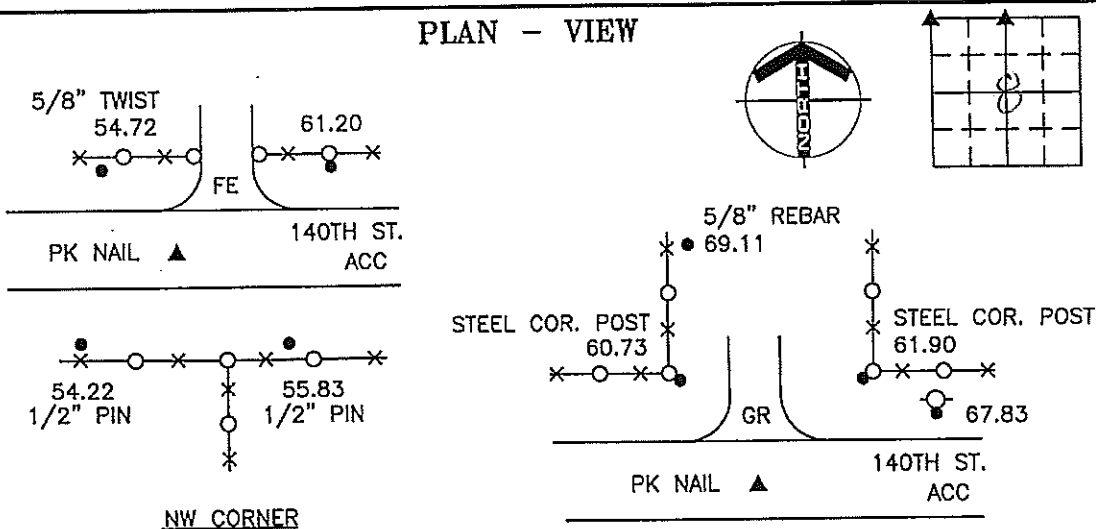
NW CORNER - FOUND PK NAIL USING CHICKASAW COUNTY ENGINEERING DEPT.

REFERENCE TIES.

N 1/4 CORNER - FOUND PK NAIL USING CHICKASAW COUNTY ENGINEERING DEPT.

REFERENCE TIES.

PLAN - VIEW



Cor. B
 6-96-14

Cor. A
 5-96-14

LEGEND

- x-x-o- - UTILITY POLE
- x-x-o-x- - EXISTING FENCE, FENCE POST
- ▲ - FOUND LAND CORNER
- ▲ - SET LAND CORNER
- - FOUND 'x' NAILS
- - SET REFERENCE TIES ARE A BRASS DISK STAMPED RLS 11306 UNLESS NOTED
- SRP - SURVEY REFERENCE POINT
- ACC - ASPHALT CEMENT CONCRETE SURFACING
- PCC - PORTLAND CEMENT CONCRETE SURFACING
- GR - GRAVEL SURFACING



ENGINEERS • ARCHITECTS
 SURVEYORS • PLANNERS
 LANDSCAPE ARCHITECTS

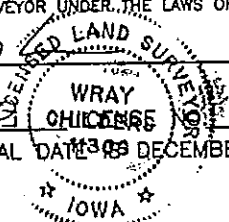
YAGGY COLBY ASSOCIATES
 215 NORTH ADAMS
 MASON CITY, IOWA 50401
 515-424-6344
 FAX 515-424-0351
 FILE 961408

I HEREBY CERTIFY THAT THIS LAND SURVEYING DOCUMENT WAS PREPARED BY ME OR UNDER MY DIRECT PERSONAL SUPERVISION AND THAT I AM A DULY LICENSED LAND SURVEYOR UNDER THE LAWS OF THE STATE OF IOWA.

WRAY CHILDERS

DATE: 2/5/00 CHICKASAW COUNTY IOWA 11306

MY LICENSE RENEWAL DATE: 30 DECEMBER 31, 2001



SEAL

PROJECT NO. 4647

Corners	Section	Twp	Range
NW	8	96N	14W
N 1/4	8	96N	14W

2000-0243