

Chickasaw Co. Recorder
 Cindy Messersmith
Fee Book 2009-1101
 05/29/2009 @12:12PM
 SCC SEC COR CERT
 Book: Page: # Pages: 1
 Total Fees: \$7.00

Cor. C
 7-96-14
 As referred to
 in Engg. Tie Book

Herold - Reicks Surveying, 25 1/2 East Main Street, Suite 204, New Hampton, IA 50659, Ph. 641-394-2725

UNITED STATES PUBLIC LAND SURVEY CORNER CERTIFICATE

Land Survey Monuments situated in Section 8, Township 96 North, Range 14 West of the Fifth Principal Meridian, Chickasaw County, Iowa. Previously not recorded in the County Recorder's office.

This certificate is being prepared in compliance with Iowa Code Chapter 355.11 because:

- There is no certificate on file for this corner.
- There are no longer three valid ties of record.
- There are changes to reference ties of record.
- There is change of monumentation of record.
- To clarify description of record monument (ties).

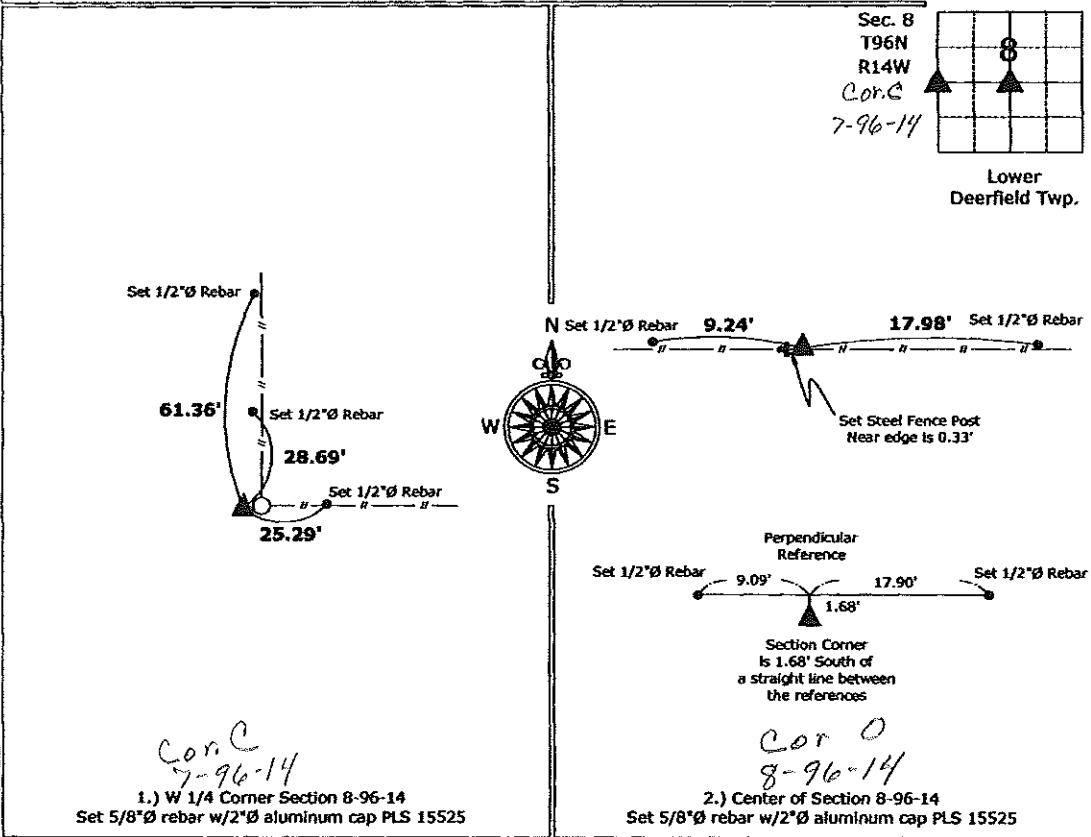
Monument Description and Remarks:

1.) W 1/4 Corner Section 8-96-14: Set 5/8"Ø rebar w/2"Ø aluminum cap PLS 15525 at the record distance from the NW Corner, this distance (2621.45') was shown on a survey and plat made by Harlan K. Schuck, recorded January 31, 2002, Document #2002-0331, on this survey it was indicated that the corner was set, there was no monument found and there was no section corner certificate filed for this corner, there are no other records of the perpetuation of a monument at this position, the distance places the corner at an existing fence corner and the position is consistent with the lines of ownership, therefore accepted the position as the corner and monumented said position.

2.) Center of Section 8-96-14: Set 5/8"Ø rebar w/2"Ø aluminum cap PLS 15525 at the intersection of the Quarter Section Lines.

PLAN - VIEW

(Show a minimum of three reference ties to durable physical objects, relevant monuments and physical conditions that will enable recovery of the corner.)

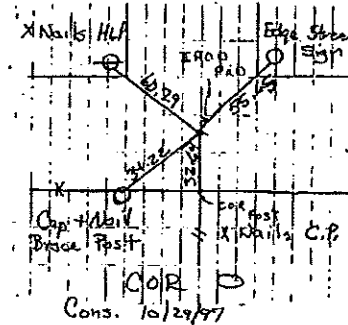
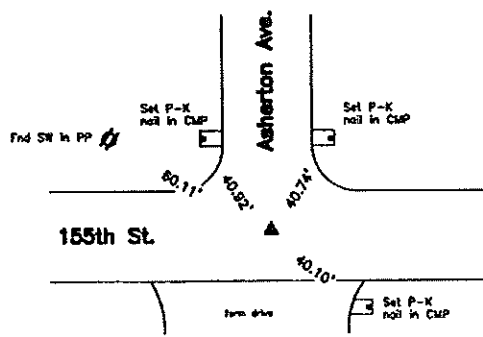


	I hereby certify that this land surveying document was prepared and the related survey work was performed by me or under my direct personal supervision and that I am a duly licensed Land Surveyor under the laws of the State of Iowa. <i>Paul R. Herold</i> 5-22-09 Paul R. Herold Date: License number 15525 My license renewal date is December 31, 2010. Sheets covered by this seal: Individual sheet only	List Corners to be Indexed <table border="1"> <thead> <tr> <th>Corners</th> <th>Section</th> <th>Twp.</th> <th>Range</th> </tr> </thead> <tbody> <tr> <td>W 1/4</td> <td>8</td> <td>96</td> <td>14</td> </tr> <tr> <td>Center</td> <td>8</td> <td>96</td> <td>14</td> </tr> </tbody> </table>	Corners	Section	Twp.	Range	W 1/4	8	96	14	Center	8	96	14
	Corners	Section	Twp.	Range										
	W 1/4	8	96	14										
Center	8	96	14											
Project Number: 2009-052 FB: Chickasaw County 2, Pgs. 12-14														

File: S:\Projects\2009\2009-052\dwg\2009-052.dwg, 5/22/2009 03:21:06

Center

CO ENGR'S RECORD TIES



Cor O

Monument Description, Remarks, and Plan View:

Center - History of Corner =

- 1996, Mar. 14 - "REBAR" per Floyd County Recorder's Book I.S. 8 Page 126.
 - 1996, Mar. 14 - "REBAR" per Chickasaw County Recorder's Book 160 Pages 200 and 202.
 - 1997, Sep. 18 - "FOUND 1" PIPE" per Chickasaw County Recorder's Book 165 Page 182.
 - 1997, Oct. 29 - "FOUND 1" PIPE" per Chickasaw County Recorder's Book 165 Page 353.
 - 2001, Dec. 26 - "FND. 1" PIPE" per Chickasaw County Recorder's File 2002-0331.
- Previous County Engineer's ties indicate that corner is monumented with "Found large Rock with Point Up & Brick Beside, Put IRON PIN over High Point & Tied" and "Large Rock".
 Current County Engineer's ties indicate that corner is monumented "IRON PIN" with ties as shown above.

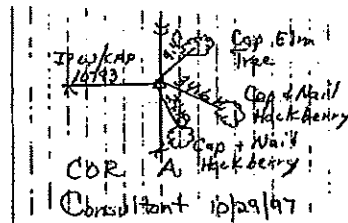
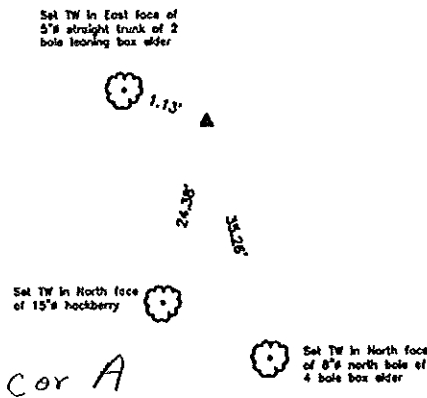
Corner Recovery =

Searched area with a metal detector, excavated a 0.5' x 0.6' deep hole at magnetic reading. Found a 1" ID x 1.1' iron pipe, 0.5' deep. Probed on all sides of pipe and hit stone on west side of pipe. Excavated a 1' x 1.9' deep hole on the west side of pipe and found an 8" (North-South) x 9" (East-West) hard gray pointed stone, 1.6' deep, (pipe is leaning slightly west with top of pipe over high point of stone), 1'± East of apparent centerline of traveled surface of gravel road North and 2'± North of apparent centerline of traveled surface of gravel road East-West. Location of monuments found match that of record, monuments found match that of record and record ties are within reason. Therefore, used pipe as the correct corner. All ties are plumb distance.

This certificate is being prepared because there are no longer three valid ties of record.

S/4 Corner

CO ENGR'S RECORD TIES



Cor A

Monument Description, Remarks, and Plan View:

S/4 Corner History of Corner =

- 1996, Mar. 14 - "REBAR/CAP # 10793" per Floyd County Recorder's Book I.S. 8 Pages 124B, 125B and 126.
 - 1996, Mar. 14 - "REBAR/CAP # 10793" per Chickasaw County Recorder's Book 160 Pages 200 and 202.
 - 1997, Sep. 18 - "FOUND REBAR WITH L.S. CAP NO. 10793" per Chickasaw County Recorder's Book 165 Page 182.
 - 1997, Oct. 29 - "FOUND REBAR WITH L.S. CAP NO. 10793" per Chickasaw County Recorder's Book 165 Page 353.
- Previous County Engineer's ties indicate that corner is monumented with "Post".
 Current County Engineer's ties indicate that corner is monumented with "IP W/CAP 10793" with ties as shown above.

Corner Recovery =

Searched area with a metal detector, excavated a 4' x 3' deep hole at rock and dirt pile and fence line remnants near record distance south of Center of Section. Found a 1/2" x 2.0' red capped iron rod (#10793) bent and leaning SW under boulder pile and twisted in fence remnants. Location of monument found matches that of record and monument found matches that of record. Tied out base of rod, removed and straightened, attempted to drive rod at base location and hit small stones. Excavated on north side of base location and found a hole in rocks with fence wire loops running North-South and West around hole indicating that hole was at the location of a fence corner which matches record certificate. Therefore, reset rod upright in hole location and used it as the correct corner. All ties are plumb distance.

This certificate is being prepared because there are no longer three valid ties of record.

Legend

- | | | |
|--------------------------------------|--|------------------------------------|
| BC = Nail with Bottle Cap | ID = Inside Diameter | R/W = Iron ROW Wall |
| BP = Brace Post | OD = Outside Diameter | SFP = Steel T Post |
| CP = Corner Post | PP = Power Pole | SW = Nail with Square Metal Washer |
| CMP = Corrugated Metal Pipe | PPW = Nail with Plastic Washer | TP = Telephone Pedestal |
| CM = 4" Sq Concrete Monument with | RCP = Reinforced Concrete Pipe | TW = Nail with Round Metal Washer |
| 1/2" iron rod in center (tie to rod) | RH = Red Head (Nail in wire) | WFP = Wood Fence Post |
| CX = Out 'X' | ROW = Right of Way | X = X Nails |
| GP = Gate Post | RW = Nail with Reflective Round Washer | |

