



Prepared by & Return to: Herold - Reicks Surveying, 10 East Main Street, New Hampton, IA 50659, Ph. 64-394-2725

### United States Public Land Survey Corner Certificate

Land Survey Monument situated in  
 Section 8, Township 96 North, Range 14 West of the Fifth Principal Meridian, Chickasaw County, Iowa.  
 On file in Document #2009-1100 in the County Recorder's office.

This certificate is being prepared in compliance with Iowa Code Chapter 355.11 because:

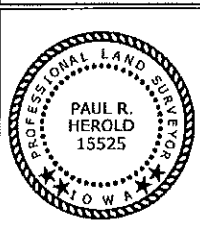
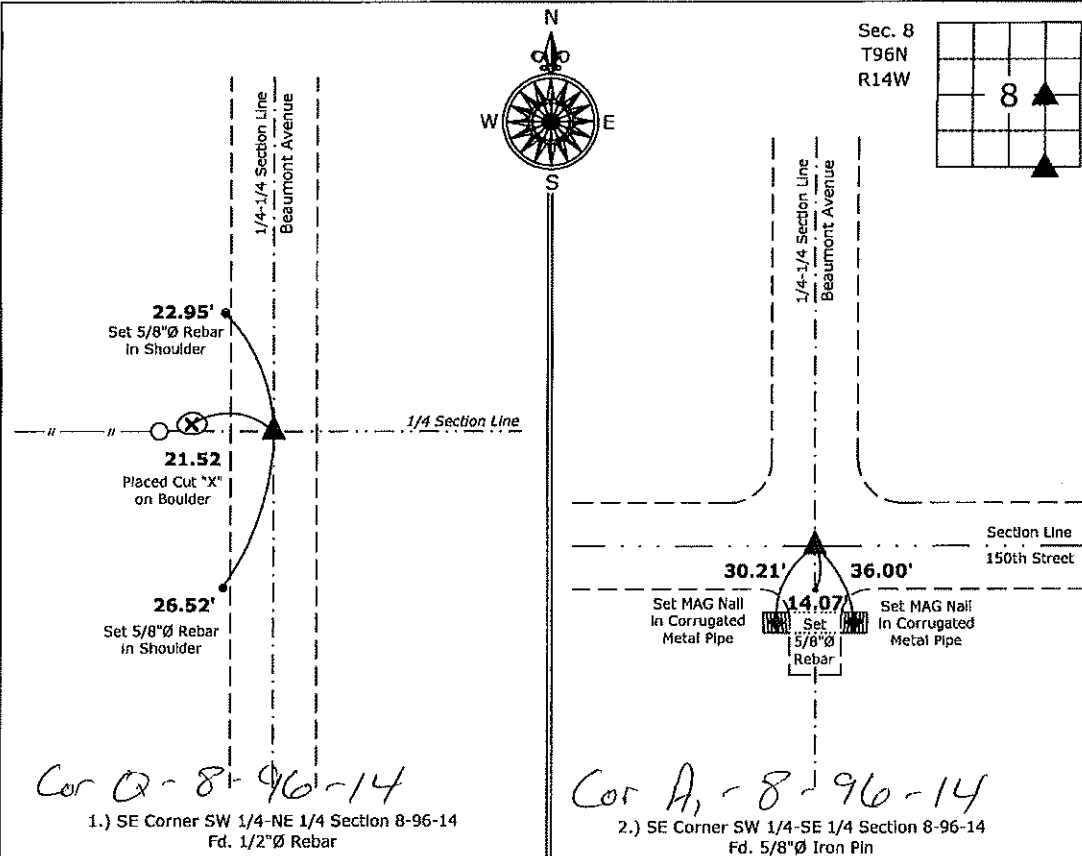
- 1.) & 2.)  There are no longer three valid ties of record.
- There is no certificate on file for this corner.
- There are changes to reference ties of record.
- There is change of monumentation of record.
- To clarify description of record monument (ties).

#### Monument Description and Remarks:

- 1.) SE Corner SW 1/4-NE 1/4 Section 8-96-14: Fd. 1/2"Ø Rebar with information obtained from the previously recorded Section Corner Certificate.
- 2.) SE Corner SW 1/4-SE 1/4 Section 8-96-14: Fd. 5/8"Ø Iron Pin with information obtained from the previously recorded Section Corner Certificate.

#### Plan View

(Show a minimum of three reference ties to durable physical objects, relevant monuments and physical conditions that will enable recovery of the corner.)



I hereby certify that this land surveying document was prepared and the related survey work was performed by me or under my direct personal supervision and that I am a duly licensed Land Surveyor under the laws of the State of Iowa.

*Paul R. Herold* 6-8-20  
 Paul R. Herold Date:  
 License number 15525  
 My license renewal date is December 31, 2020.  
 Sheets covered by this seal: Individual sheet only

List Corner to be Indexed			
Corner	Section	Twp.	Range
NE-NW-SE	8	96	14
SE-SW-SE	8	96	14

Project Number: 2020-052  
 FB: Chickasaw 10, Pg. 47

Chickasaw Co. Recorder  
 Cindy Messersmith  
**Fee Book 2009-1100**  
 05/29/2009 @12:10PM  
 SCC SEC COR CERT # Pages: 1  
 Book: Page: \$7.00  
 Total Fees:

Herold - Reicks Surveying, 25 1/2 East Main Street, Suite 204, New Hampton, IA 50658, Ph. 641-394-2725

**UNITED STATES PUBLIC LAND SURVEY CORNER CERTIFICATE**

Land Survey Monuments situated in Section 8, Township 96 North, Range 14 West of the Fifth Principal Meridian, Chickasaw County, Iowa. Previously not recorded in the County Recorder's office.

This certificate is being prepared in compliance with Iowa Code Chapter 355.11 because:

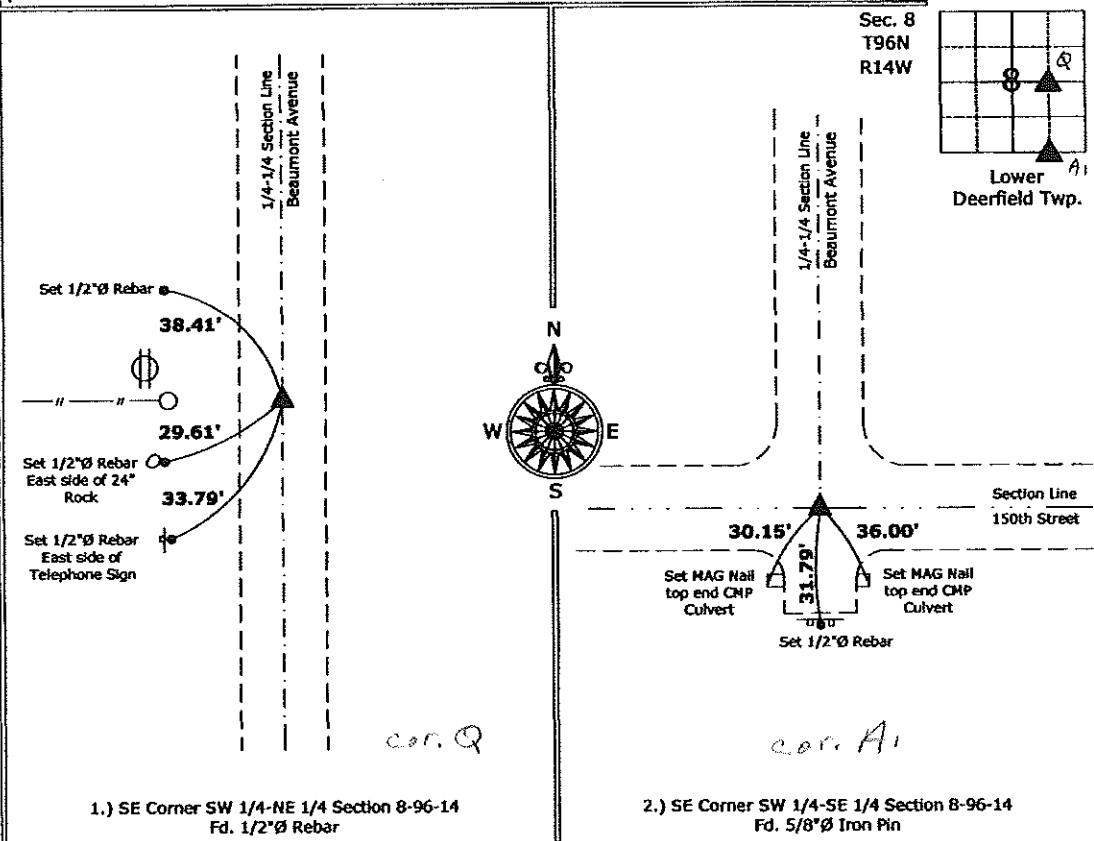
- 1.) & 2.)  There is no certificate on file for this corner.  
 There are no longer three valid ties of record.  
 There are changes to reference ties of record.  
 There is change of monumentation of record.  
 To clarify description of record monument (ties).

**Monument Description and Remarks:**

- SE Corner SW 1/4-NE 1/4 Section 8-96-14: Fd. 1/2"Ø Rebar from information obtained from the County Engineer's Office, and on a survey and plat made by Harlan K. Schuck, recorded January 31, 2002, Document #2002-033
- SE Corner SW 1/4-SE 1/4 Section 8-96-14: Fd. 5/8"Ø Iron Pin from information obtained from the County Engineer's Office, and on a survey and plat made by Harlan K. Schuck, recorded January 31, 2002, Document #2002-033

**PLAN - VIEW**

(Show a minimum of three reference ties to durable physical objects, relevant monuments and physical conditions that will enable recovery of the corner.)



1.) SE Corner SW 1/4-NE 1/4 Section 8-96-14  
 Fd. 1/2"Ø Rebar

2.) SE Corner SW 1/4-SE 1/4 Section 8-96-14  
 Fd. 5/8"Ø Iron Pin



I hereby certify that this land surveying document was prepared and the related survey work was performed by me or under my direct personal supervision and that I am a duly licensed Land Surveyor under the laws of the State of Iowa.

*Paul R. Herold* 5-22-09  
 Paul R. Herold Date:

License number 15525  
 My license renewal date is December 31, 2010.  
 Sheets covered by this seal: Individual sheet only

List Corners to be Indexed			
Corners	Section	Twp.	Range
NE-NW-SE	8	96	14
SE-SW-SE	8	96	14

Project Number: 2009-052  
 FB: Chickasaw County 2, Pgs. 12-14

File: S:\Projects\2009-052.dwg 2009-052.dwg, 5/22/2009 03:22:23