


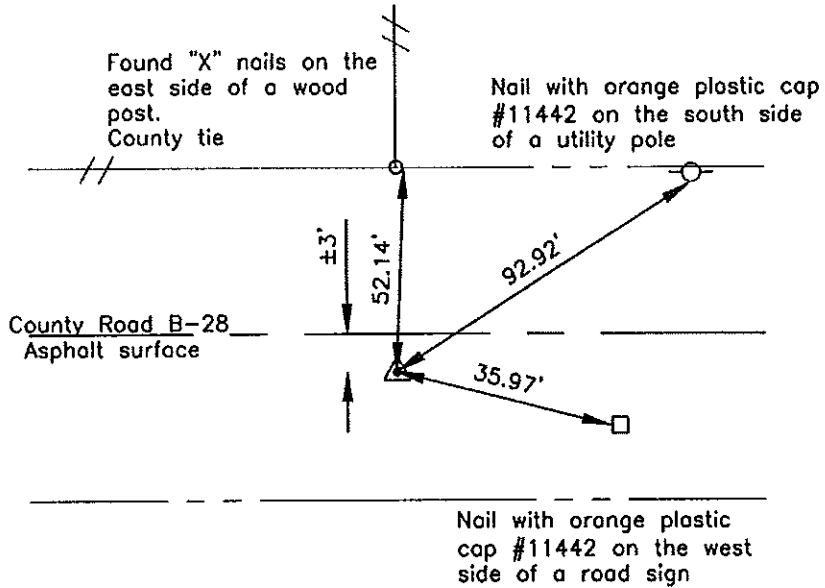
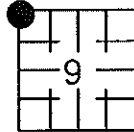
Prepared by: Erdman Engineering, P.C., 708 Commerce Drive, P.O. Box 246, Decorah, Iowa 52101 (563) 382-4194

United States Public Land Survey Corner Certificate

of 
 Land Survey Monuments situated in Section 9, Township 96, Range 14 West of
 the 5th Principal Meridian in Chickasaw County, Iowa. Previously recorded in
does not apply in the county Recorder's Office.

Monument Description and Remarks: This certificate is prepared in accordance with
 Section 355.11 of the Code of Iowa. No previous certificate has been filed for this
 corner location. Based on Chickasaw County Engineer's Preservation Record we found a
 P.K. nail in line with the fence tie running north and $\pm 3'$ south of the centerline of
 the county road that matches the description of the monument set previously as the
 NW Corner of Section 9, Township 96 North, Range 14 West.

Plan-View



Cor B
 5-96-14

I hereby certify that this land surveying document was prepared and the related survey work was performed by me or under my direct personal supervision and that I am a duly licensed Land Surveyor under the laws of the State of Iowa.

Signature Lindsay Erdman
 Lindsay Erdman, P.E. and P.L.S. Iowa License Number 11442

Date: 6/11/12

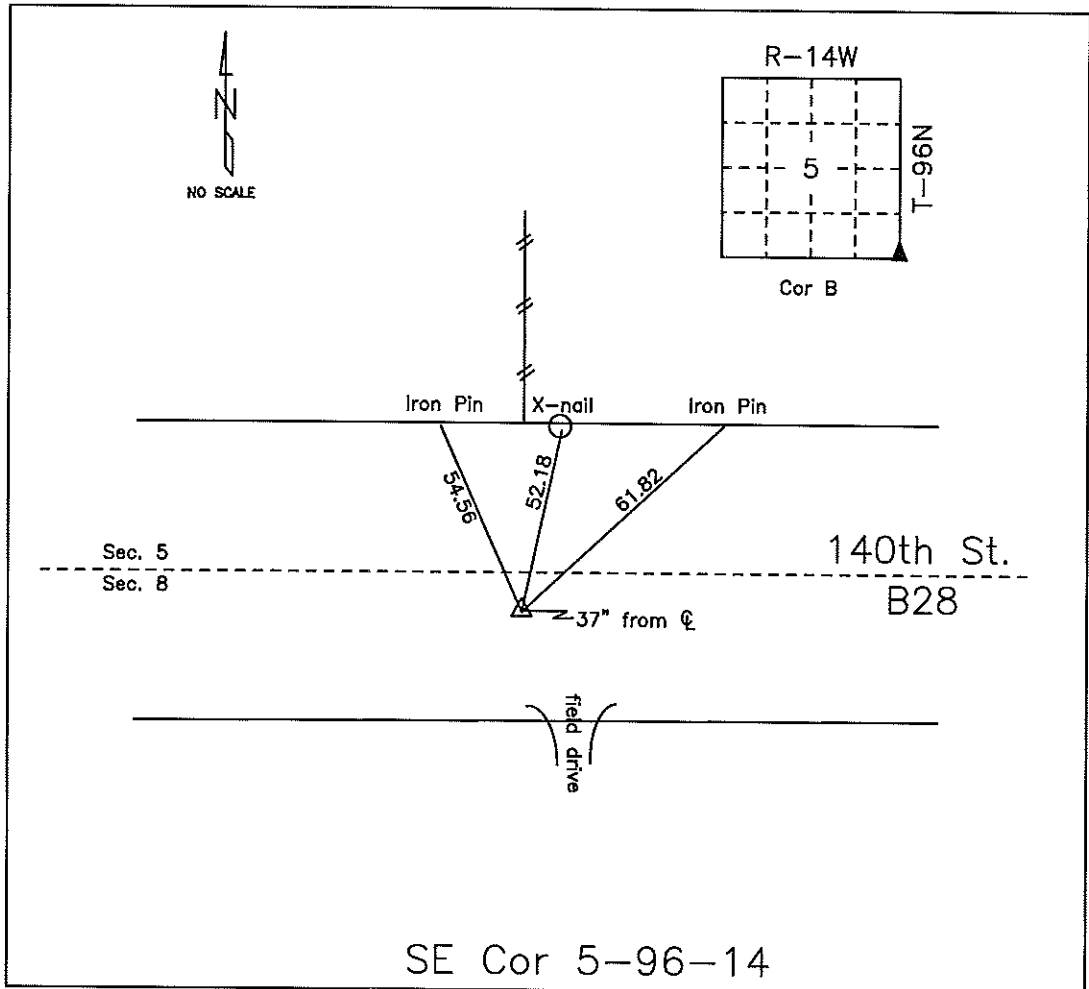
My license renewal date is December 31, 2012

Corner(s) to be Indexed

Corner	Section	Township	Range
NW	9	96	14

COUNTY ENGINEER'S SECTION CORNER PRESERVATION RECORD

LAND SURVEY MONUMENT LOCATED IN SECTION 05, TOWNSHIP 96 N
NORTH, RANGE 14 W, OF THE 5TH P.M. Chickasaw COUNTY, IOWA
PREVIOUSLY RECORDED COUNTY ENGINEER'S OFFICE



MONUMENT DESCRIPTION AND NARRATIVE Set PK-Nail 05/19/09. Previously recorded in
Chickasaw County Tie Book as corner B in sec 5 of T96N-R14W Also see project LC-370--19,
station 104+01.2.
All ties are plumbed.

I AM NOT A REGISTERED LAND SURVEYOR UNDER THE LAWS OF THE STATE OF IOWA
JIM FOSTER CHICKASAW CO. DATE: 05/19/09