

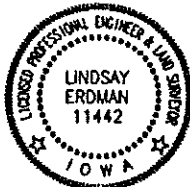
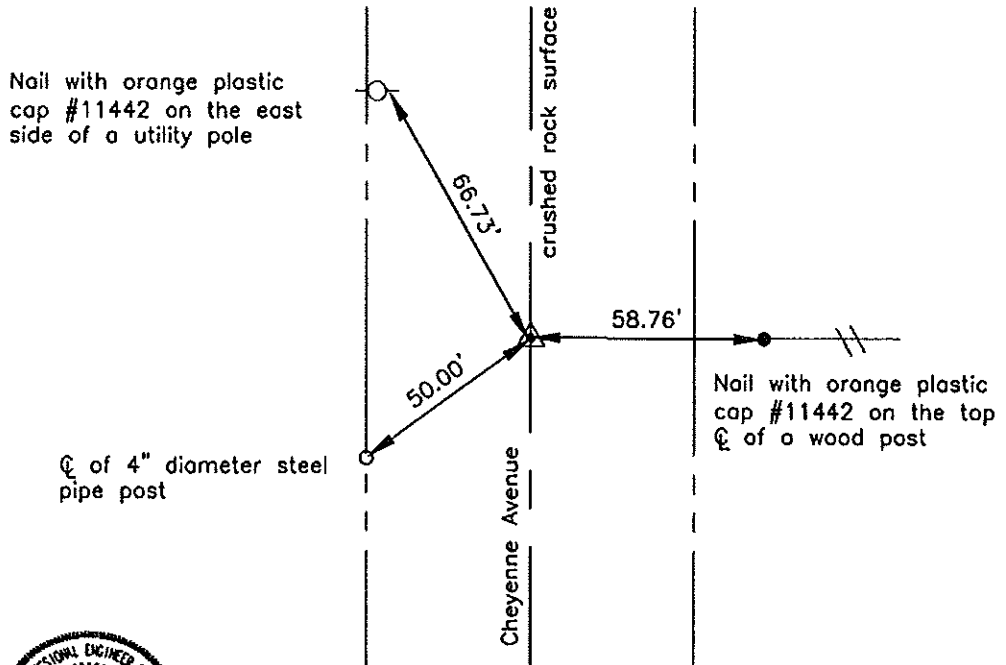
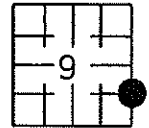
Prepared by: Erdman Engineering, P.C., 708 Commerce Drive, P.O. Box 246, Decorah, Iowa 52101 (563) 382-4194

United States Public Land Survey Corner Certificate
 of

Land Survey Monuments situated in Section 9, Township 96, Range 14 West of the 5th Principal Meridian in Chickasaw County, Iowa. Previously recorded in does not apply in the county Recorder's Office.

Monument Description and Remarks: This certificate is prepared in accordance with Section 355.11 of the Code of Iowa. No previous certificate has been filed for this corner location. Chickasaw County Engineer's Reference Ties show that an iron pin was found, raised and retied in 1962. We searched for the tie markers previously set. We did not find any as they appear to have been removed. We found a 3/4" diameter steel bar at the approximate center line of the county road and approximately midway between the SE Corner and the E 1/4 Corner. We used the steel bar as the ESE 1/8 Corner of Section 9, Township 96 North, Range 14 West.

Plan-View



cor B,
 9-96-14

I hereby certify that this land surveying document was prepared and the related survey work was performed by me or under my direct personal supervision and that I am a duly licensed Land Surveyor under the laws of the State of Iowa.

Signature: Lindsay Erdman
 Lindsay Erdman, P.E. and P.C.S. Iowa License Number 11442

Date: 6/11/12

My license renewal date is December 31, 2012

Corner(s) to be Indexed

Corner	Section	Township	Range
ESE 1/8	9	96	14