

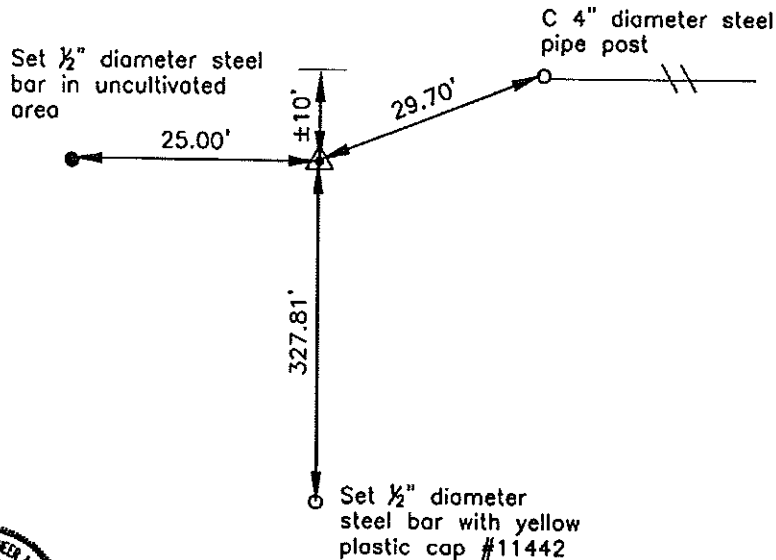
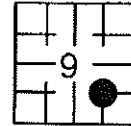
Prepared by: Erdman Engineering, P.C., 708 Commerce Drive, P.O. Box 246, Decorah, Iowa 52101 (563) 382-4194

United States Public Land Survey Corner Certificate
 of

Land Survey Monuments situated in Section 9, Township 96, Range 14 West of the 5th Principal Meridian in Chickasaw County, Iowa. Previously recorded in does not apply in the county Recorder's Office.

Monument Description and Remarks: This certificate is prepared in accordance with Section 355.11 of the Code of Iowa. No previous certificate has been filed for this corner location. We found no record of the SE 1/4 Corner being set. We found no evidence of a monument in the field. We found the SE Corner and the ESE 1/4 Corner. We set the Center Section, S 1/4 Corner and SSE 1/4 Corner. We computed the location of the S 1/4 Corner, E 1/4 Corner. We set a 1/2" diameter steel bar with 1 1/2" aluminum cap #11442 at the intersection of the lines from the midpoints of the four sides of the Southeast Quarter as the SE 1/4 Corner of Section 9, Township 96 North, Range 14 West.

Plan-View



cor K
 9-96-14



I hereby certify that this land surveying document was prepared and the related survey work was performed by me or under my direct personal supervision and that I am a duly licensed Land Surveyor under the laws of the State of Iowa.

Signature: Lindsay Erdman
 Lindsay Erdman, P.E. and P.L.S. Iowa License Number 11442

Date: 6/14/12

My license renewal date is December 31, 2012

Corner(s) to be Indexed

| Corner | Section | Township | Range |
|---------|---------|----------|-------|
| SE 1/16 | 9 | 96 | 14 |