

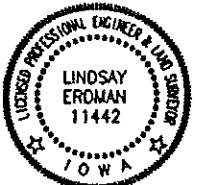
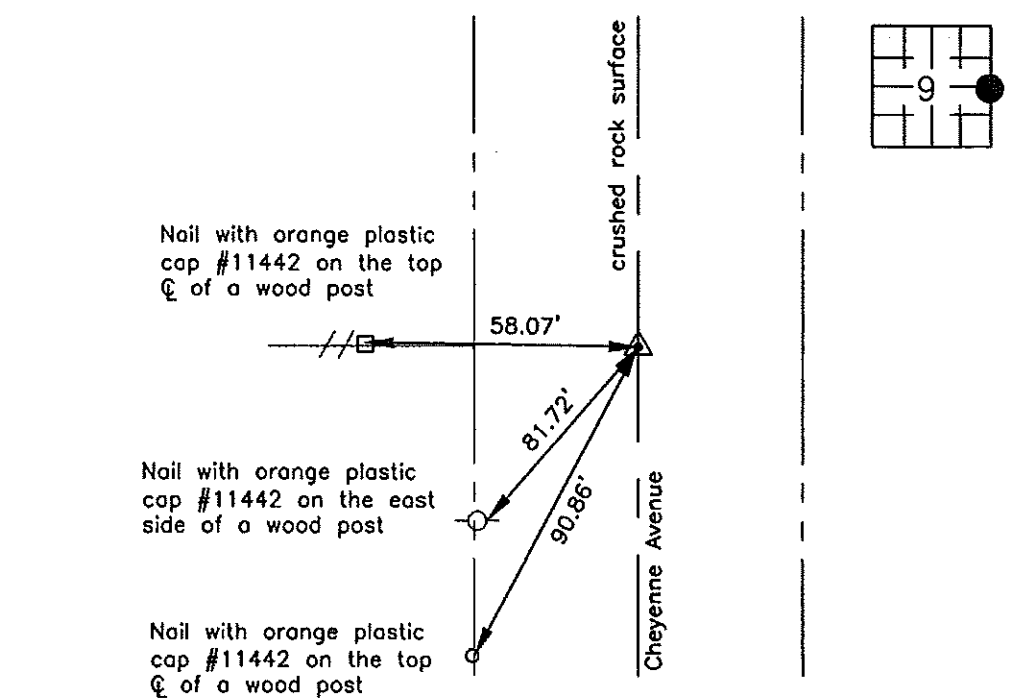
Prepared by: Erdman Engineering, P.C., 708 Commerce Drive, P.O. Box 246, Decorah, Iowa 52101 (563) 382-4194

United States Public Land Survey Corner Certificate
of

Land Survey Monuments situated in Section 9, Township 96, Range 14 West of the 5th Principal Meridian in Chickasaw County, Iowa. Previously recorded in does not apply in the county Recorder's Office.

Monument Description and Remarks: This certificate is prepared in accordance with Section 355.11 of the Code of Iowa. No previous certificate has been filed for this corner location. Chickasaw County Engineer's Reference Ties show that an iron pin and oak stake were found in 1926 and 1953. We searched for the tie markers previously set. We did not find any as they appear to have been removed. We made an magnetic locator search of a $\pm 20'$ diameter area at the approximate centerline of the county road and in line with the fence line running west. County Engineer's Reference Ties show that the previous monument was in line with the fence line running west and at the center line of the ROW. We dug a 2' diameter hole $\pm 2'$ deep at the centerline of the county road and in line with the fence line running west. We did not find the stake or the iron pin. We set a $\frac{1}{2}$ " diameter steel bar with 1 $\frac{1}{2}$ " aluminum cap #11442 at the center of the 100' wide ROW and in line with the fence line running west as the E $\frac{1}{4}$ Corner of Section 9, Township 96 North, Range 14 West.

Plan-View



cor. C
9-96-14

I hereby certify that this land surveying document was prepared and the related survey work was performed by me or under my direct personal supervision and that I am a duly licensed Land Surveyor under the laws of the State of Iowa.

Signature: Lindsay Erdman
Lindsay Erdman, P.E. and P.L.S. Iowa License Number 11442

Date: 6/11/12

My license renewal date is December 31, 2012

Corner(s) to be Indexed

Corner	Section	Township	Range
E 1/4	9	96	14