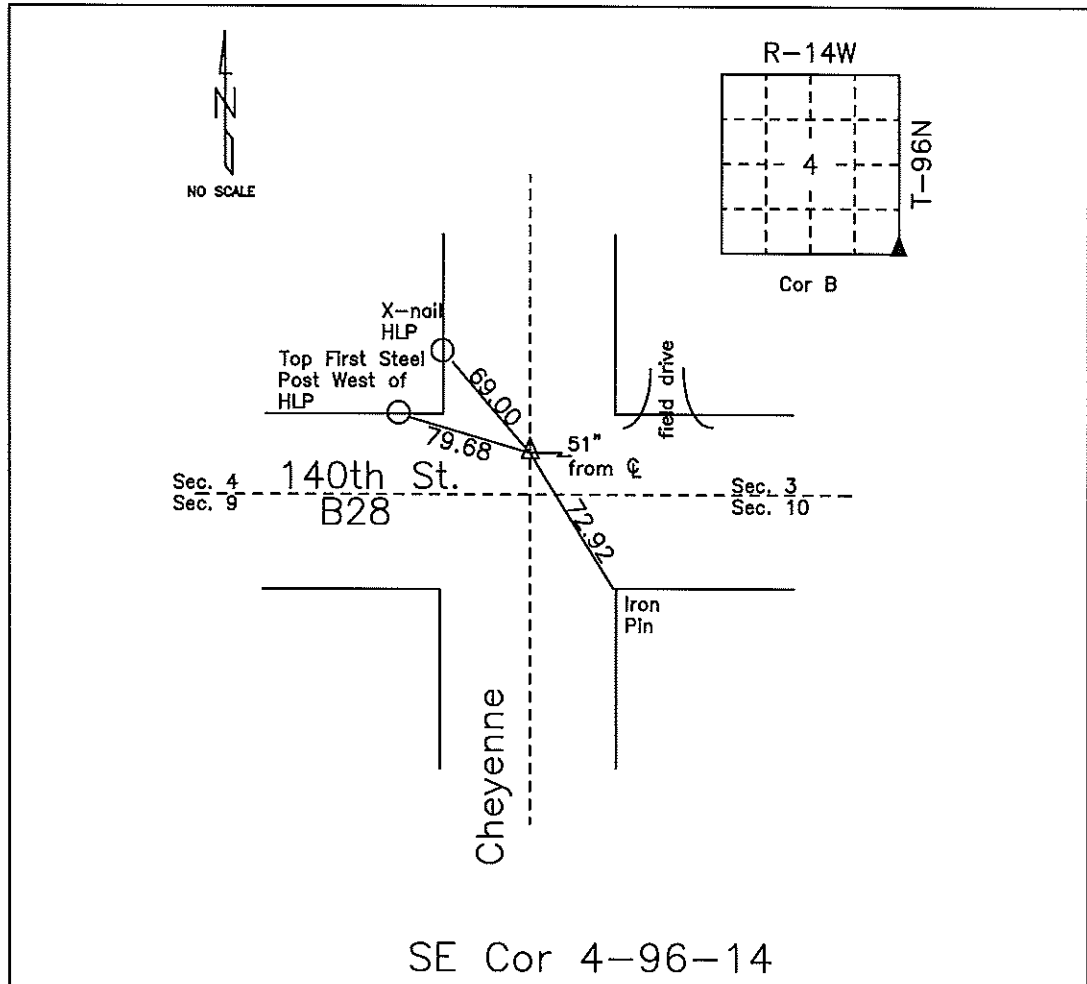


COUNTY ENGINEER'S SECTION CORNER PRESERVATION RECORD

LAND SURVEY MONUMENT LOCATED IN SECTION 04, TOWNSHIP 96 N
 NORTH, RANGE 14 W, OF THE 5TH P.M. Chickasaw COUNTY, IOWA
 PREVIOUSLY RECORDED COUNTY ENGINEER'S OFFICE



MONUMENT DESCRIPTION AND NARRATIVE Set PK-Nail 05/19/09. Previously recorded by

Kenneth Stark as NE corner of sec 9-96-14. See also LC-370--73-19, station 157+49.5.

All ties are slope chained

I AM NOT A REGISTERED LAND SURVEYOR UNDER THE LAWS OF THE STATE OF IOWA

JIM FOSTER CHICKASAW CO. DATE: 05/19/09

Section 4-96-14.
As referred to in
Engl. Tie Book

PREPARED BY: KENNETH D. STARK 1622 SOUTH TAFT MASON CITY, IOWA 50401 (515) 423-7947

UNITED STATES PUBLIC LAND SURVEY CORNER CERTIFICATE

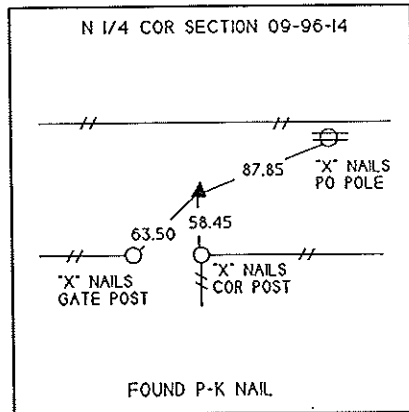
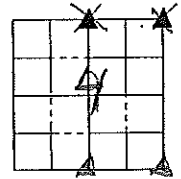
4 OF

LAND SURVEY MONUMENTS SITUATED IN SECTION 09, TOWNSHIP 96N, RANGE 14W, OF THE 5th PRINCIPAL MERIDIAN
CHICKASAW COUNTY, IOWA PREVIOUSLY RECORDED IN (NOT APPLICABLE) IN COUNTY RECORDER'S OFFICE.

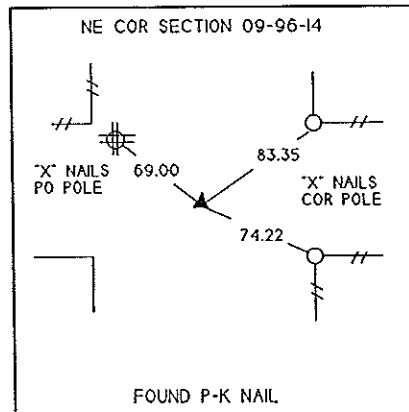
MONUMENT DESCRIPTION AND REMARKS:

- NE CORNER - FOUND P-K NAIL
- N 1/4 CORNER - FOUND P-K NAIL

PLAN VIEW



Cor A
4-96-14



Cor B
4-96-14



I HEREBY CERTIFY THAT THE SURVEY WORK WAS COMPLETED AND THIS CERTIFICATE WAS PREPARED BY ME OR UNDER MY DIRECT PERSONAL SUPERVISION AND THAT I AM A DULY REGISTERED LAND SURVEYOR UNDER THE LAWS OF THE STATE OF IOWA.

SIGNATURE: *Kenneth D. Stark*
NAME TYPED OR PRINTED: KENNETH D. STARK
DATE: 06-18-96 REG. NO. 10898

SEAL



LIST OF CORNERS TO BE INDEXED

CORNERS	SECTION	TWP	RANGE
NE COR	09	96	14
N 1/4 COR	09	96	14

COR A 4-96-14

*Placed in Tie Book
6/27/96*