

Herold - Reicks Surveying, 10 East Main Street, New Hampton, IA 50659, Ph. 641-394-2725, Fax. 641-394-2176

UNITED STATES PUBLIC LAND SURVEY CORNER CERTIFICATE

Land Survey Monuments situated in Section **20**, Township **97** North, Range **14** West of the Fifth Principal Meridian, **Chickasaw** County, Iowa. Both not previously recorded in the County Recorder's office.

This certificate is being prepared in compliance with Iowa Code Chapter 355.11 because:

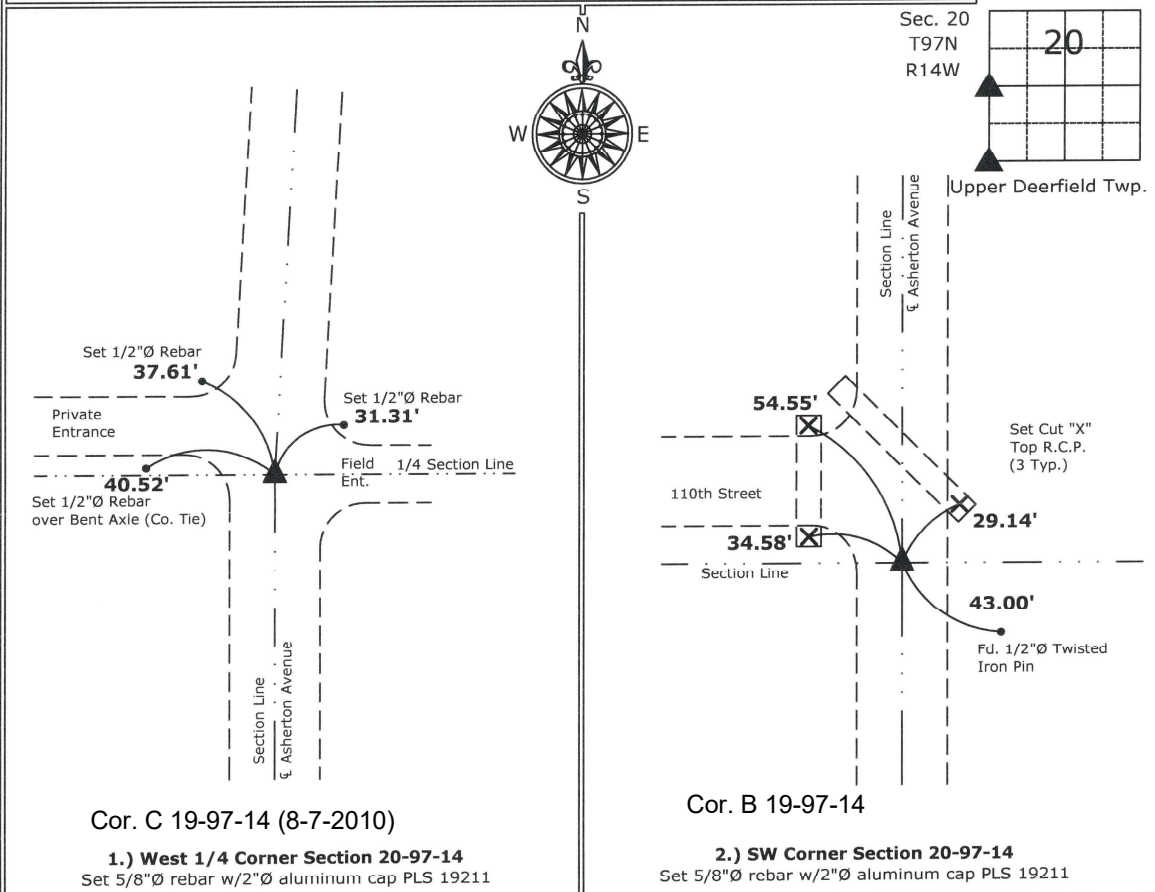
- 1.) & 2.) There are no certificates on file for these corners.
- There are no longer three valid ties of record.
- There are changes to reference ties of record.
- There is change of monumentation of record.
- To clarify description of record monument (ties).

Monument Description and Remarks:

- 1.) West 1/4 Corner:** Set 5/8"Ø rebar with 2"Ø aluminum cap PLS 19211 with information obtained from the County Engineer's Office.
- 2.) SW Corner:** Set 5/8"Ø rebar with 2"Ø aluminum cap PLS 19211 with information obtained from the County Engineer's Office.

PLAN - VIEW

(Show a minimum of three reference ties to durable physical objects, relevant monuments and physical conditions that will enable recovery of the corner.)



I hereby certify that this land surveying document was prepared and the related survey work was performed by me or under my direct personal supervision and that I am a duly licensed Land Surveyor under the laws of the State of Iowa.

Kirk D. Reicks 8-7-10
 Kirk D. Reicks Date:
 License number 19211
 My license renewal date is December 31, 2010.
 Sheets covered by this seal: Individual sheet only

List Corners to be Indexed			
Corners	Section	Twp.	Range
W 1/4	20	97	14
SW	20	97	14

Project Number: 2010-066
 FB: Chickasaw County 1, Pgs. 43-45

File: S:_Projects\2010-066\dwg\2010-066.dwg, 8/7/2010 10:12:06 AM