

TeKIPPE ENGINEERING, P.C., 128 South Vine Street, West Union, Iowa 52175 Phone (563) 422-5131

UNITED STATES PUBLIC LAND SURVEY CORNER CERTIFICATE
 OF

Land Survey Monuments situated in Section 19, Township 97 North, Range 14 West of the Fifth Principal Meridian, Chickasaw County, Iowa.
 Previously recorded in none in County Recorder's Office.
 (book, page, document number, etc.)

(Show reason for preparing this certificate, the evidence and detailed procedures used in establishing the corner positions and monumentation found or placed.)

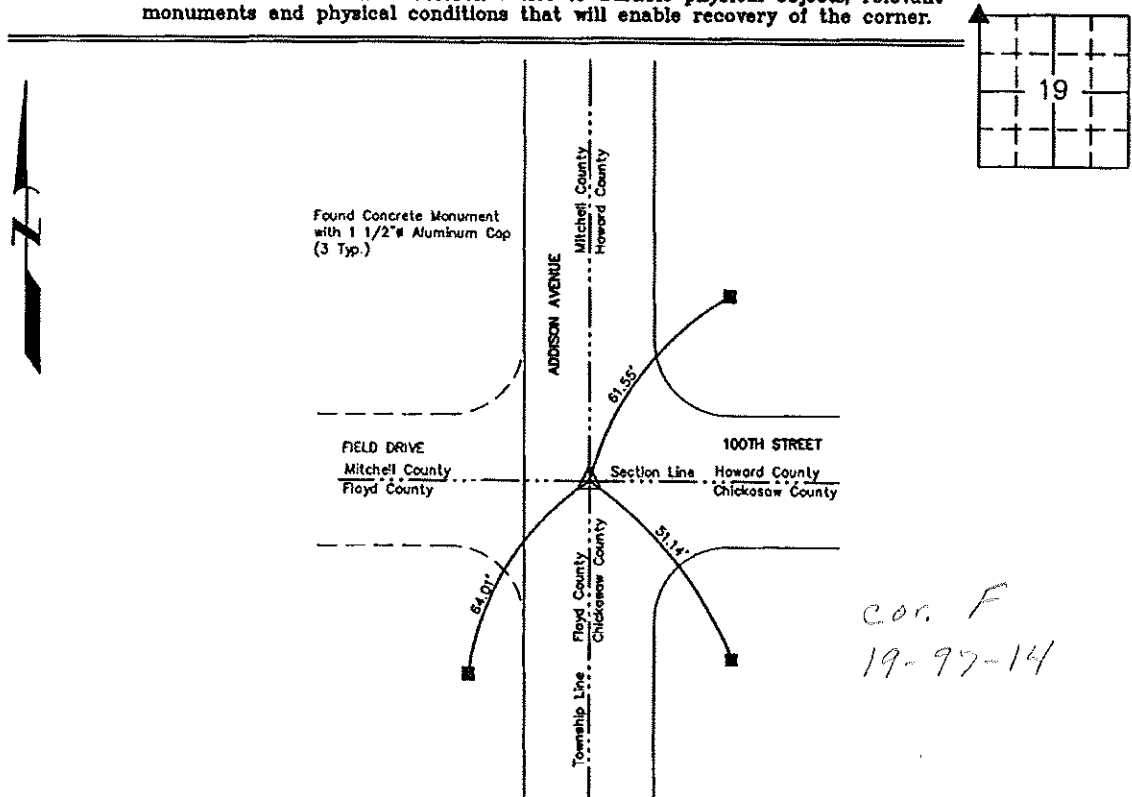
Monument Description and Remarks: NW Corner of Section 19-T97N-R14W:

Found 3/4" square twisted iron bar matching distances to reference monuments per corner certificate recorded in Book 2012, Page 0054, on file in the Floyd County Engineer's office. Mitchell County Engineer's notes call for 5/8" iron pin, accepted 3/4" square twisted iron bar as the corner.

PLAN VIEW

Project Number 121107.LS
 Field Book: 52C, Page 50

Show a minimum of three reference ties to durable physical objects, relevant monuments and physical conditions that will enable recovery of the corner.



NW Corner of Sec. 19-T97N-R14W
 Found 3/4" Square Twisted Iron Bar

	I hereby certify that this land surveying document was prepared and the related survey work was performed by me or under my direct personal supervision and that I am a duly licensed Land Surveyor under the laws of the State of Iowa.	List Corners to be Indexed <table border="1"> <thead> <tr> <th>Corners</th> <th>Section</th> <th>Twp.</th> <th>Range</th> </tr> </thead> <tbody> <tr> <td>NW</td> <td>19</td> <td>97N</td> <td>14W</td> </tr> </tbody> </table>	Corners	Section	Twp.	Range	NW	19	97N	14W
	Corners	Section	Twp.	Range						
NW	19	97N	14W							
 Lyle G. TeKippe, P.E. & P.L.S. Date 7-16-12 License Number 7060 My license renewal date is December 31, 2012. Sheets covered by this seal: This Sheet Only	X:\Section Corners\Sec. 19\19-97-14A.dwg									