

*Herold - Reicks Surveying, 10 East Main Street, New Hampton, IA 50659, Ph. 641-394-2725, Fax. 641-394-2718*

**UNITED STATES PUBLIC LAND SURVEY CORNER CERTIFICATE**

Land Survey Monuments situated in Section 20, Township 97 North, Range 14 West of the Fifth Principal Meridian, Chickasaw County, Iowa. Both not previously recorded in the County Recorder's office.

This certificate is being prepared in compliance with Iowa Code Chapter 355.11 because:

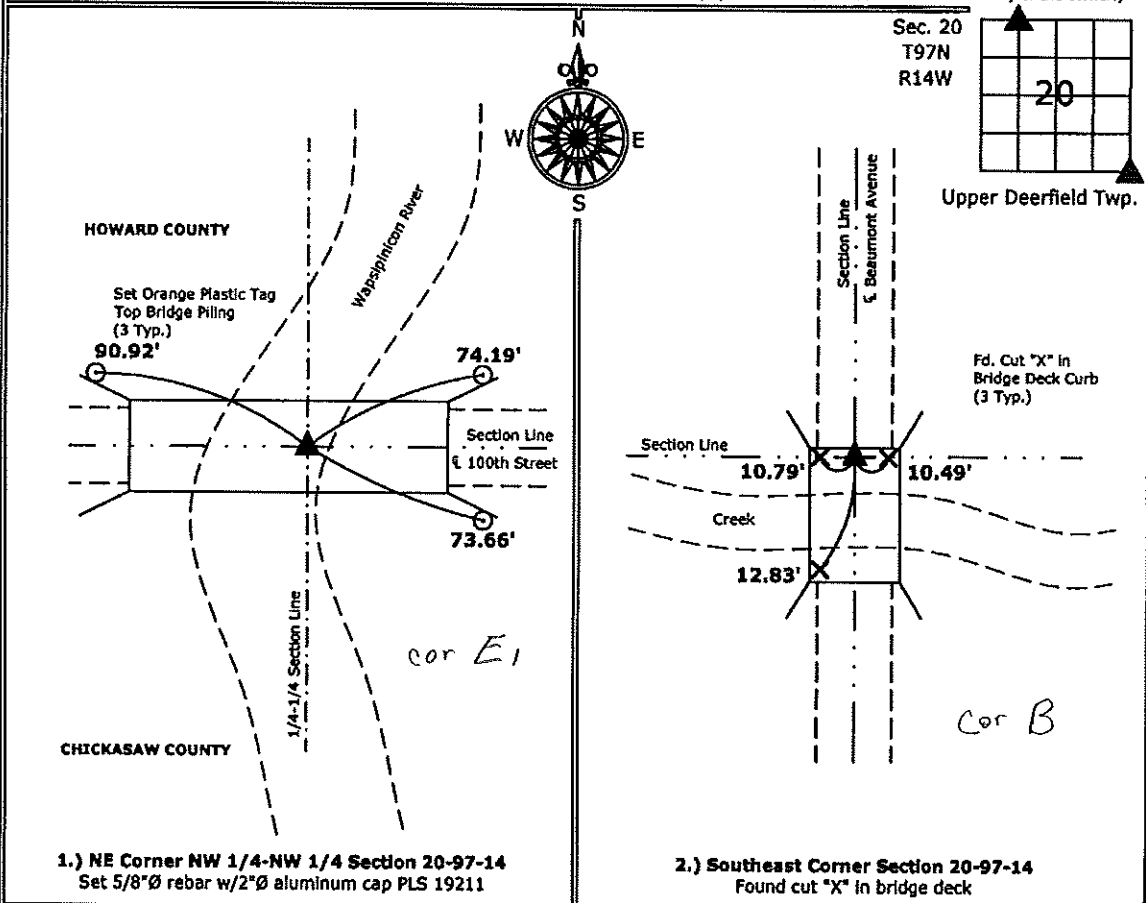
- 1.) & 2.)  There are no certificates on file for these corners.  
 There are no longer three valid ties of record.  
 There are changes to reference ties of record.  
 There is change of monumentation of record.  
 To clarify description of record monument (ties).

**Monument Description and Remarks:**

- 1.) NE Corner NW 1/4-NW 1/4:** Set 5/8"Ø rebar with 2"Ø aluminum cap PLS 19211 in wood bridge deck equidistant and online between the Northwest Corner and the North 1/4 Corner of Section.
- 2.) Southeast Corner:** Found cut "X" in bridge deck from information obtained from County Engineer's Office.

**PLAN - VIEW**

(Show a minimum of three reference ties to durable physical objects, relevant monuments and physical conditions that will enable recovery of the corner.)



**1.) NE Corner NW 1/4-NW 1/4 Section 20-97-14**  
 Set 5/8"Ø rebar w/2"Ø aluminum cap PLS 19211

**2.) Southeast Corner Section 20-97-14**  
 Found cut "X" in bridge deck



I hereby certify that this land surveying document was prepared and the related survey work was performed by me or under my direct personal supervision and that I am a duly licensed Land Surveyor under the laws of the State of Iowa.

*Kirk D. Reicks 8-7-10*  
 Kirk D. Reicks Date:

License number 19211  
 My license renewal date is December 31, 2010.  
 Sheets covered by this seal: Individual sheet only

List Corners to be Indexed			
Corners	Section	Twp.	Range
NE-NW-NW	20	97	14
SE	20	97	14

Project Number: 2010-066

FB: Chickasaw County 1, Pgs. 43-45