

UNITED STATES PUBLIC LAND SURVEY CORNER CERTIFICATE

OF

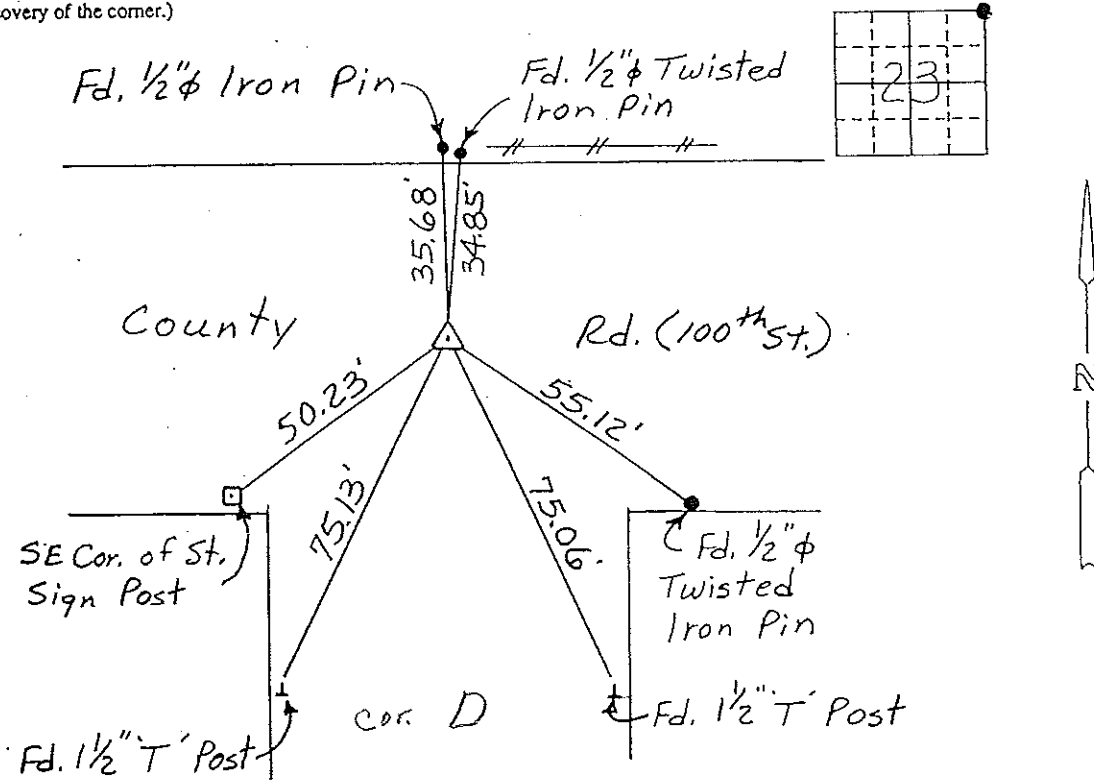
Land Survey Monuments situated in Section 23, Township 97 NORTH, Range 14 WEST, of the Fifth Principal Meridian, CHICKASAW County, Iowa. Previously recorded in (NONE) in County Recorder's Office.

(Show reason for preparing this certificate, the evidence and detailed procedures used in establishing the corner positions and monumentation found or placed.)

Monument Description and Remarks: NE CORNER, SECTION 23-T97N-R14W:
FOUND 5/8" IRON PIN.

PLAN - VIEW

(Show a minimum of three reference ties to durable physical objects, relevant monuments and physical conditions that will enable recovery of the corner.)



NE CORNER, SECTION 23-T97N-R14W

I hereby certify that the survey work was completed and this certificate was prepared by me or under my direct personal supervision and that I am a duly registered land surveyor under the laws of the state of Iowa.

Signature: Lyle G. TeKippe
Name typed or printed: Lyle G. TeKippe

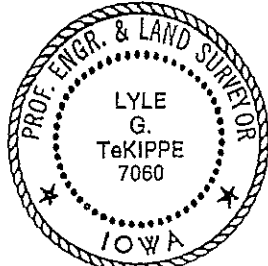
Date: 1-15-93 Reg. No. 7060

My Registration Expires December 31, 1994

Comers	Section	Twp	Range
NE	23	97N	14W

*Corner D
23-97-14
Placed in Tee
Book 1/4/93*

SEAL



151-146

"County Engineer's Copy"