

Prepared by & Return to: Herold - Recks Surveying, 10 East Main Street, New Hampton, IA 50659, Ph. 641-394-2725

### UNITED STATES PUBLIC LAND SURVEY CORNER CERTIFICATE

Land Survey Monuments situated in Section 27, Township 97 North, Range 14 West of the Fifth Principal Meridian, Chickasaw County, Iowa. 1.) & 2.) Not previously recorded in the County Recorder's office.

This certificate is being prepared in compliance with Iowa Code Chapter 355.11 because:

- 1.) & 2.)  There is no certificate on file for this corner.
- There are no longer three valid ties of record.
- There are changes to reference ties of record.
- There is change of monumentation of record.
- 1.) & 2.)  To clarify description of record monument (ties).

**Monument Description and Remarks:**

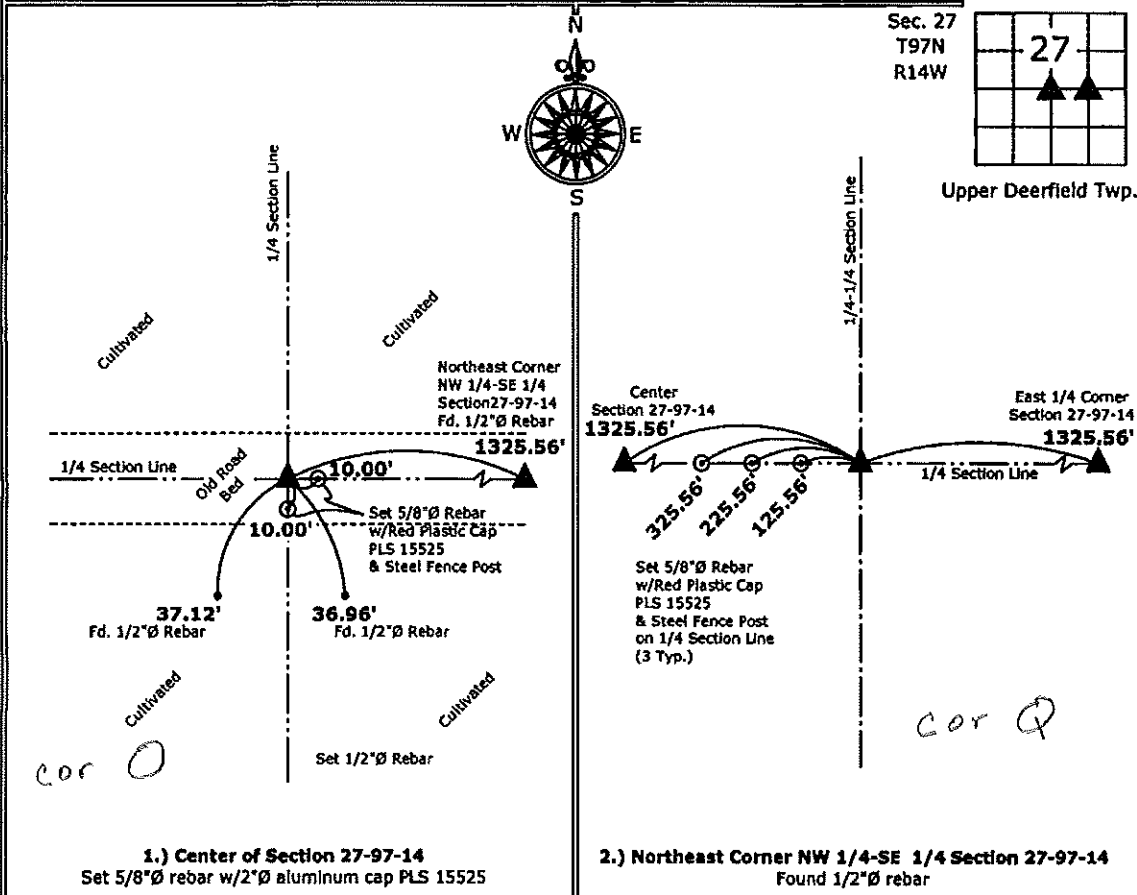
**1.) Center of Section:** Set 5/8"Ø rebar with 2"Ø aluminum cap PLS 15525 at record location from a Survey and Plat made by Lyle G. Tekippe, Doc. #2004-1056.

**2.) Northeast Corner NW 1/4-SE 1/4 Section:** Found 1/2"Ø rebar with information obtained from the County Engineer's office.

**Note:** Both corners were shown on a Plat of Survey made by Lyle G. Tekippe recorded in Doc. #2004-1056

#### PLAN - VIEW

(Show a minimum of three reference ties to durable physical objects, relevant monuments and physical conditions that will enable recovery of the corner.)



I hereby certify that this land surveying document was prepared and the related survey work was performed by me or under my direct personal supervision and that I am a duly licensed Land Surveyor under the laws of the State of Iowa.

*Paul R. Herold* 8-19-11  
 Paul R. Herold Date:

License number 15525  
 My license renewal date is December 31, 2012.  
 Sheets covered by this seal: Individual sheet only

List Corners to be Indexed			
Corners	Section	Twp.	Range
CTR	27	97	14
NE-NW-SE	27	97	14

Project Number: 2011-072  
 FB: Chickasaw County 4, Pgs. 8-10