

**UNITED STATES PUBLIC LAND
SURVEY CORNER CERTIFICATE OF**

Land Survey Monuments situated in Section 27,
Township 97N, Range 14W of the 5th Principal Meridian,
Chickasaw County, Iowa.
Previously recorded in Book (Drawer) N/A, Page
(Document) N/A, in association with a survey for:
Ron Dunn

Instrument #: 2020-0514
03/26/2020 10:35:48 AM Total Pages: 1
SCC SECTION CORNER CERTIFICATES
Recording Fee: \$ 7.00
Shirley Troyna, Recorder, Chickasaw County Iowa



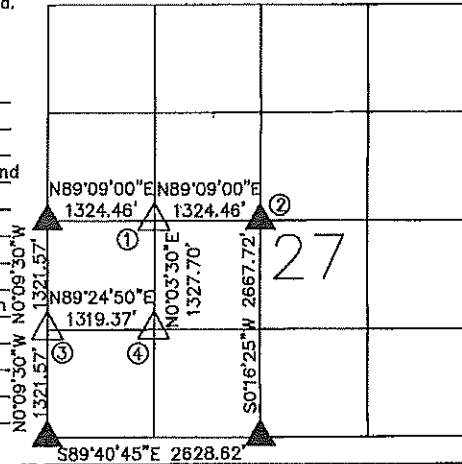
Reason for preparing Certificate:

- There is no Certificate for the corner on file with the County Recorder.
- Corner position differs from that previously recorded.
- The corner monument has been replaced or modified.
- The existing Certificate reference ties are incorrect or changed.

FOR RECORDER'S USE ONLY

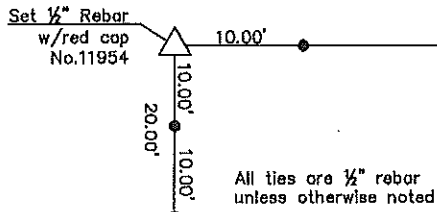
Monument Description and Remarks:

- ① NW CORNER NE1/4-SW1/4 - Set 1/2" Rebar w/Red Cap No.11954 online and midway between W1/4 Corner and Center of Section 27.
- ② Center - Found 8" cut off power pole at tie distances from found 5/8" rebar w/Red Cap No. 15525 referenced in Corner Certificate recorded in Fee Book 2011-1402 in the Office of the Chickasaw County Recorder.
- ③ NW Corner SW1/4-SW1/4 - Set Mag Nail online and midway between the W1/4 Corner and SW Corner of Section 27.
- ④ NE CORNER SW1/4-SW1/4 - Set 1/2" Rebar w/Red Cap No.11954 at aliquot subdivision of SW Quarter of Section 27.



① NW CORNER
NE1/4-SW1/4

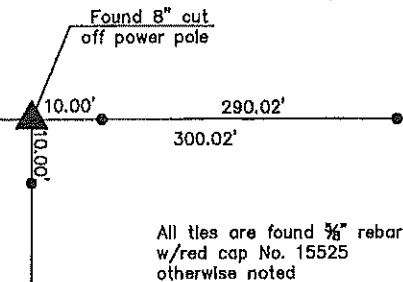
Cor P-27-97-14



All ties are 1/2" rebar unless otherwise noted

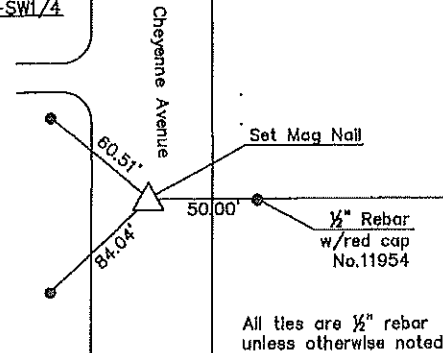
② CENTER

Cor O-27-97-14



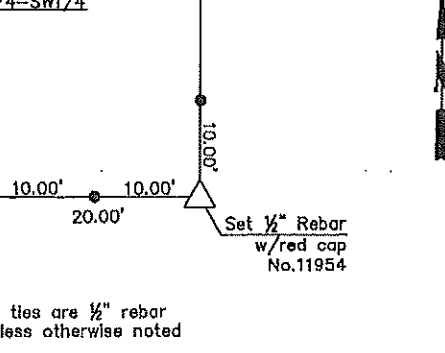
All ties are found 5/8" rebar w/red cap No. 15525 otherwise noted

③ NW CORNER
SW1/4-SW1/4



All ties are 1/2" rebar unless otherwise noted

④ NE CORNER
SW1/4-SW1/4



All ties are 1/2" rebar unless otherwise noted

Cor B1-28-97-14

Cor I-27-97-14



Certification:

I hereby certify that this land surveying document was prepared and the related survey work was performed by me or under my direct personal supervision and that I am a duly licensed Land Surveyor under the laws of the State of Iowa

Daniel J. Johnson 3-23-20
Date
Daniel J. Johnson
License number 11954
My current license renewal date is December 31, 2020

JOHNSON LAND SURVEYING

9520 200th Street, Davenport, IA 52804
Ph: (563) 506-9954

Corner Certificate Prepared By:
Daniel J. Johnson, L.S. #11954

Prepared by & Return to: Herold - Recks Surveying, 10 East Main Street, New Hampton, IA 50658, Ph. 641-364-2725

UNITED STATES PUBLIC LAND SURVEY CORNER CERTIFICATE

Land Survey Monuments situated in Section 27, Township 97 North, Range 14 West of the Fifth Principal Meridian, Chickasaw County, Iowa. 1.) Previously recorded in Bk. 148, Pg. 250 in the County Recorder's office. 2.) Not previously recorded in the County Recorder's office.

This certificate is being prepared in compliance with Iowa Code Chapter 355.11 because:

- 2.) There is no certificate on file for this corner.
- 1.) There are no longer three valid ties of record.
- 1.) There are changes to reference ties of record.
- There is change of monumentation of record.
- To clarify description of record monument (ties).

Monument Description and Remarks:

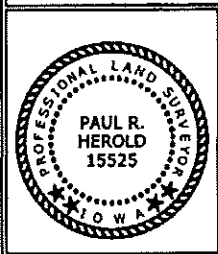
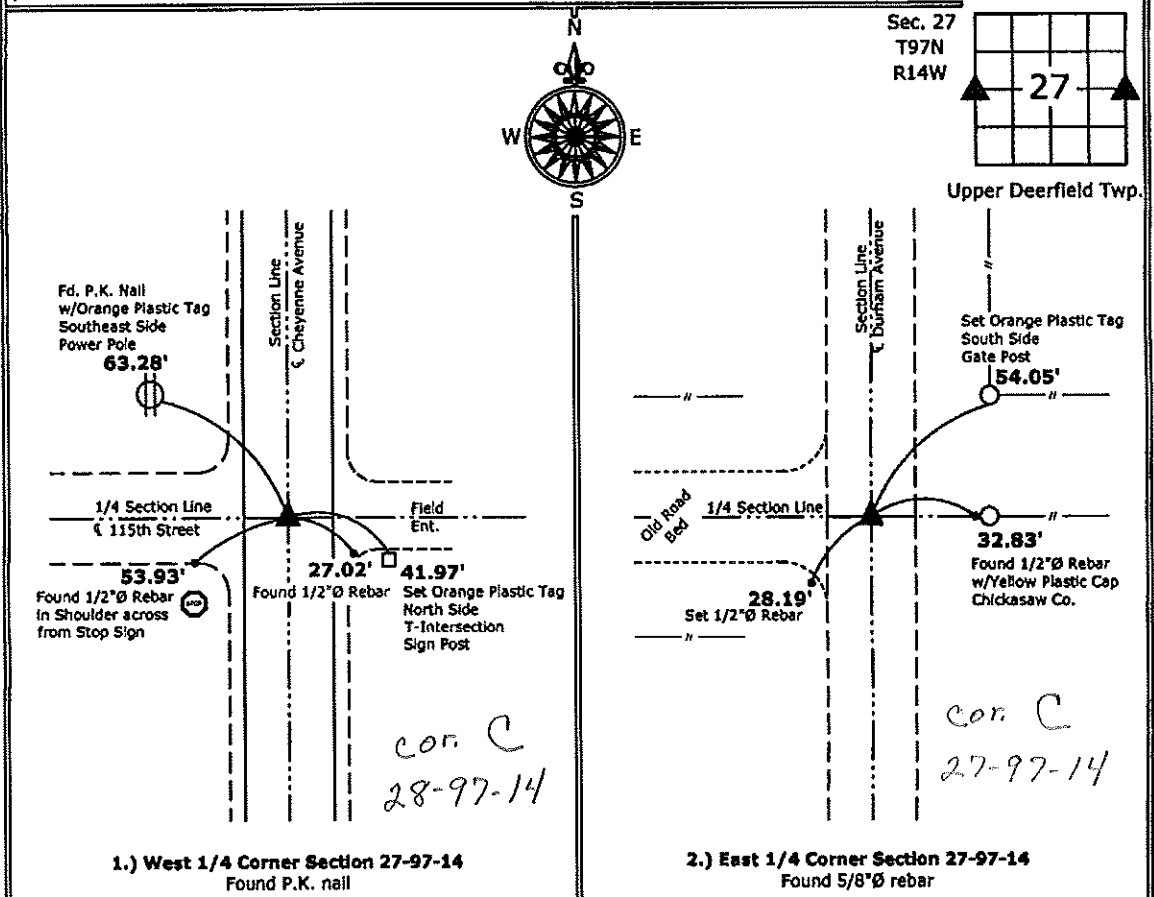
1.) **West 1/4 Corner:** Found P.K. nail with information obtained from previous Section Corner Certificate.

2.) **East 1/4 Corner:** Found 5/8"Ø rebar with information obtained from the County Engineer's office.

Note: Both corners were shown on a Plat of Survey made by Lyle G. Tekippe recorded in Doc. #2004-1056

PLAN - VIEW

(Show a minimum of three reference ties to durable physical objects, relevant monuments and physical conditions that will enable recovery of the corner.)



I hereby certify that this land surveying document was prepared and the related survey work was performed by me or under my direct personal supervision and that I am a duly licensed Land Surveyor under the laws of the State of Iowa.

Paul R. Herold 8-19-11
 Paul R. Herold Date:
 License number 15525
 My license renewal date is December 31, 2012.
 Sheets covered by this seal: Individual sheet only

List Corners to be Indexed			
Corners	Section	Twp.	Range
W 1/4	27	97	14
E 1/4	27	97	14

Project Number: 2011-072
 FB: Chickasaw County 4, Pgs. 8-10

UNITED STATES PUBLIC LAND SURVEY CORNER CERTIFICATE

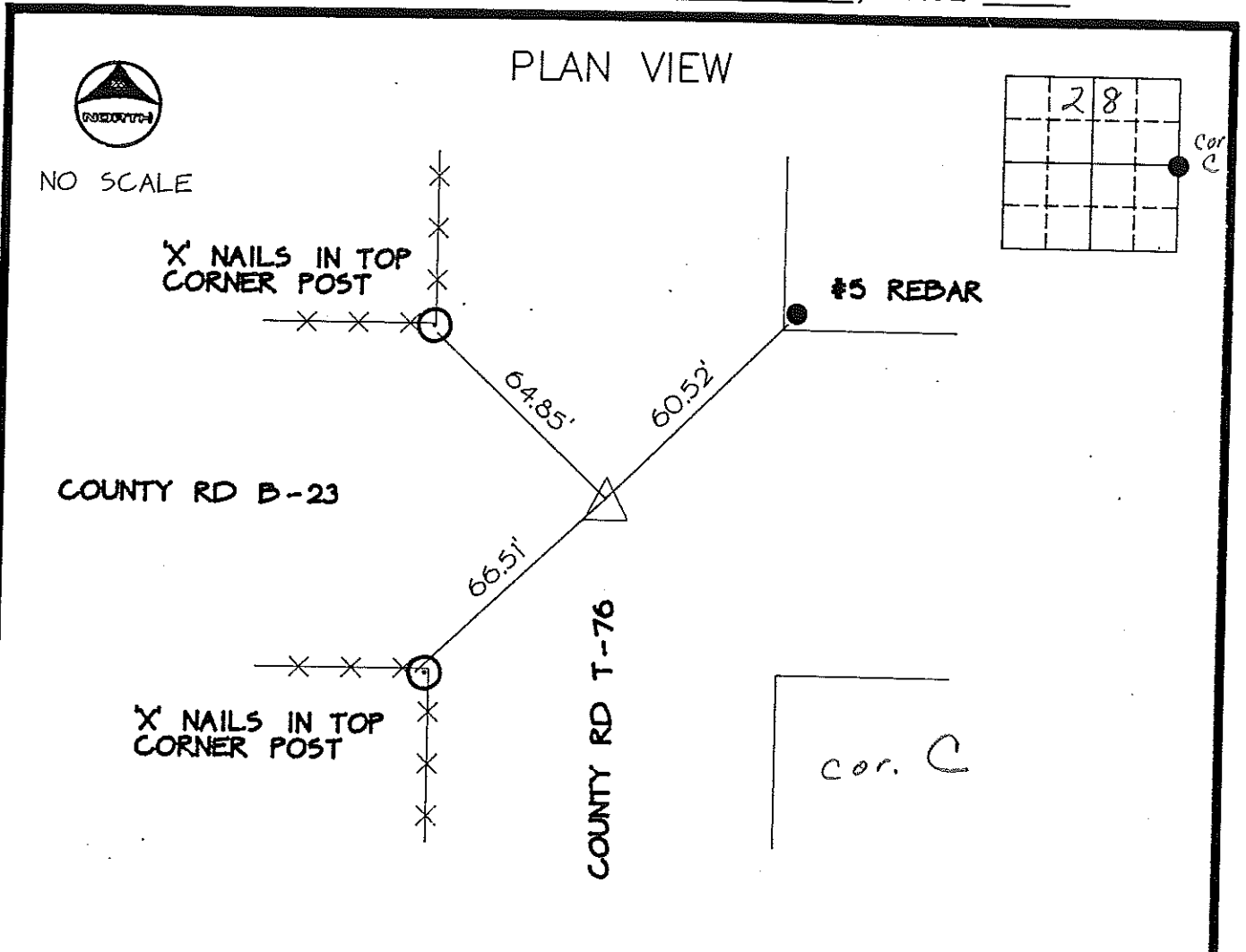
SECTION 28 , TOWNSHIP 97 , RANGE 14 OF THE 5TH. P.M.
 IN CHICKASAW COUNTY, IOWA

CORNER: NE COR SE1/4, AKA E1/4

DESCRIPTION AND REMARKS:

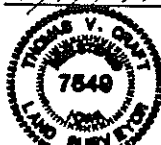
Found P.K. NAIL

PREVIOUSLY RECORDED IN BOOK _____, PAGE _____



CERTIFICATION:
 I HEREBY CERTIFY THAT THIS MAP, PLAT, OR SURVEY WAS MADE BY
 ME OR UNDER MY DIRECT PERSONAL SUPERVISION AND THAT I AM A
 DULY REGISTERED LAND SURVEYOR UNDER THE LAWS OF THE STATE
 OF IOWA.

Thomas V. Craft
 THOMAS V. CRAFT REG. L.S. NO. 7549 DATE: 4/17/91



MCN/213850

INDEXING ALTERNATIVES

CORNER	SECTION	TWP	RANGE
--------	---------	-----	-------

W1/4	27	97	14
------	----	----	----

147-121

Howard R. Green Company, Charles City, Iowa

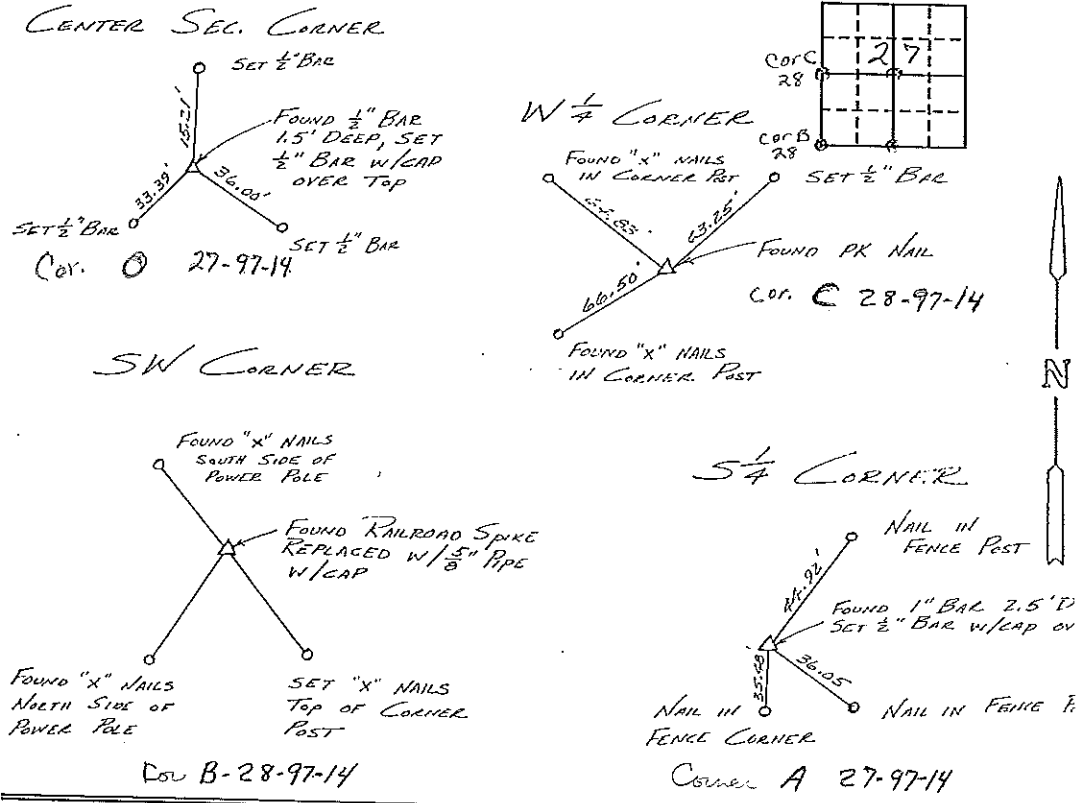
UNITED STATES PUBLIC LAND SURVEY CORNER CERTIFICATE
OF

Land Survey Monuments situated in Section 27, Township 97, Range 14,
 of the Fifth Principal Meridian, CHICKASAW County, Iowa.
 Previously recorded in DOES NOT APPLY in County Recorder's Office.
(book, page, document number, etc.)

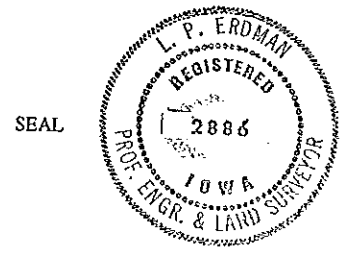
(Show reason for preparing this certificate, the evidence and detailed procedures used in establishing the corner positions and monumentation found or placed.)
 Monument Description and Remarks: _____

PLAN - VIEW

(Show a minimum of three reference ties to durable physical objects, relevant monuments and physical conditions that will enable recovery of the corner.)



I hereby certify that the survey work was completed and this certificate was prepared by me or under my direct personal supervision and that I am a duly registered land surveyor under the laws of the state of Iowa.
 Signature: L. P. Erdman
 Name typed or printed: L. P. ERDMAN
 Date: 22 MAY 1991 Reg. No. 2886



Corners	List Corners to be Indexed Section	Twp	Range
S 1/4	27	97	14
W 1/4	"	"	"
SW	"	"	"
CENTER	"	"	"

Placed in the Book 5/91