

Herold - Reicks Surveying, 10 East Main Street, New Hampton, IA 50659, Ph. 641-394-2725, Fax. 641-394-2718

UNITED STATES PUBLIC LAND SURVEY CORNER CERTIFICATE

Land Survey Monuments situated in Section 29, Township 97 North, Range 14 West of the Fifth Principal Meridian, Chickasaw County, Iowa. Both not previously recorded in the County Recorder's office.

This certificate is being prepared in compliance with Iowa Code Chapter 355.11 because:

- 1.) & 2.) There are no certificates on file for these corners.
 There are no longer three valid ties of record.
 There are changes to reference ties of record.
 There is change of monumentation of record.
 To clarify description of record monument (ties).

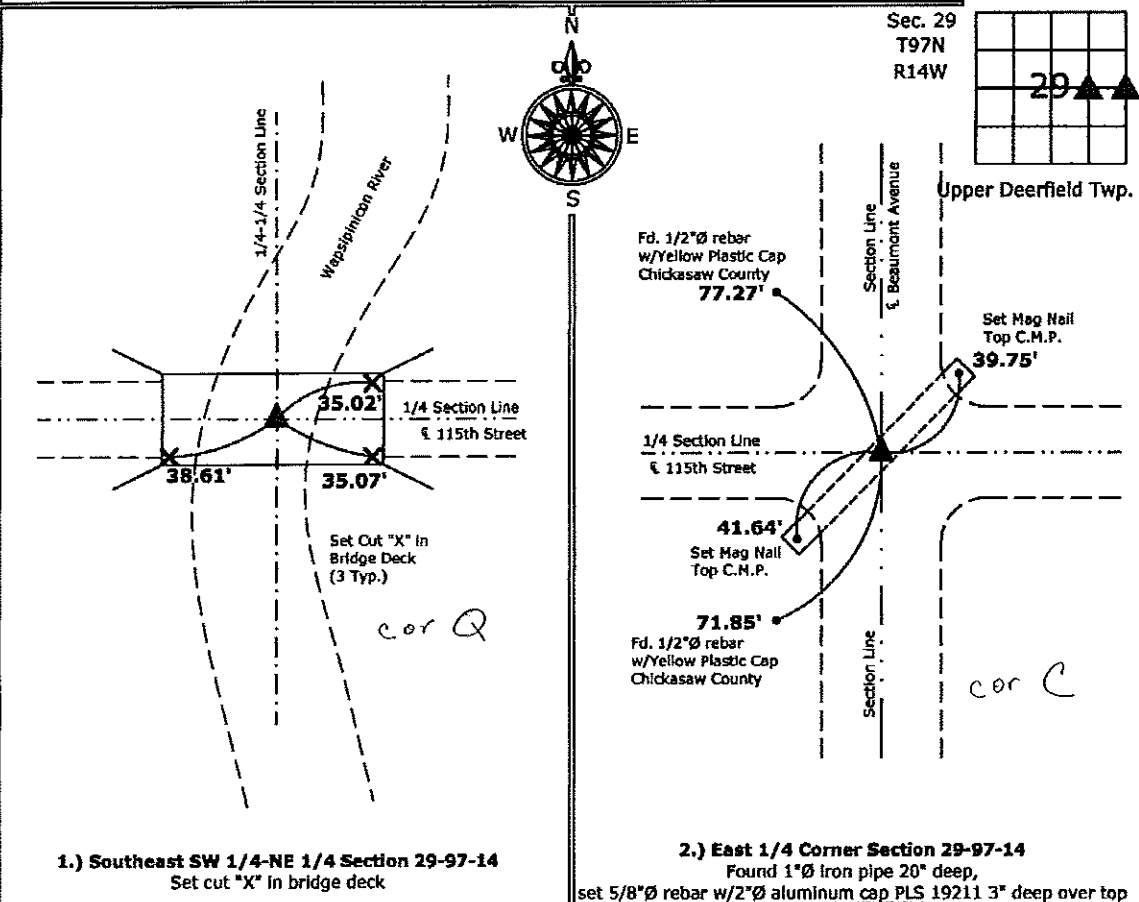
Monument Description and Remarks:

1.) East 1/4 Corner: Found 1"Ø iron pipe 20" deep with information obtained from the County Engineer's Office, set 5/8"Ø rebar with 2"Ø aluminum cap PLS 19211 over top to perpetuate monument.

2.) SE Corner SW 1/4-NE 1/4: Set cut "X" in bridge deck equidistant and on line between the East 1/4 Corner and the Center of Section.

PLAN - VIEW

(Show a minimum of three reference ties to durable physical objects, relevant monuments and physical conditions that will enable recovery of the corner.)



1.) Southeast SW 1/4-NE 1/4 Section 29-97-14
 Set cut "X" in bridge deck

2.) East 1/4 Corner Section 29-97-14
 Found 1"Ø iron pipe 20" deep,
 set 5/8"Ø rebar w/2"Ø aluminum cap PLS 19211 3" deep over top



I hereby certify that this land surveying document was prepared and the related survey work was performed by me or under my direct personal supervision and that I am a duly licensed Land Surveyor under the laws of the State of Iowa.

Kirk D. Reicks 8-7-10
 Kirk D. Reicks

List Corners to be Indexed			
Corners	Section	Twp.	Range
E 1/4	29	97	14
SE-SW-NE	29	97	14

L:\Projects\2010\2010-066\cwg\2010-066.dwg, 8/7/2010 10:41:52 AM