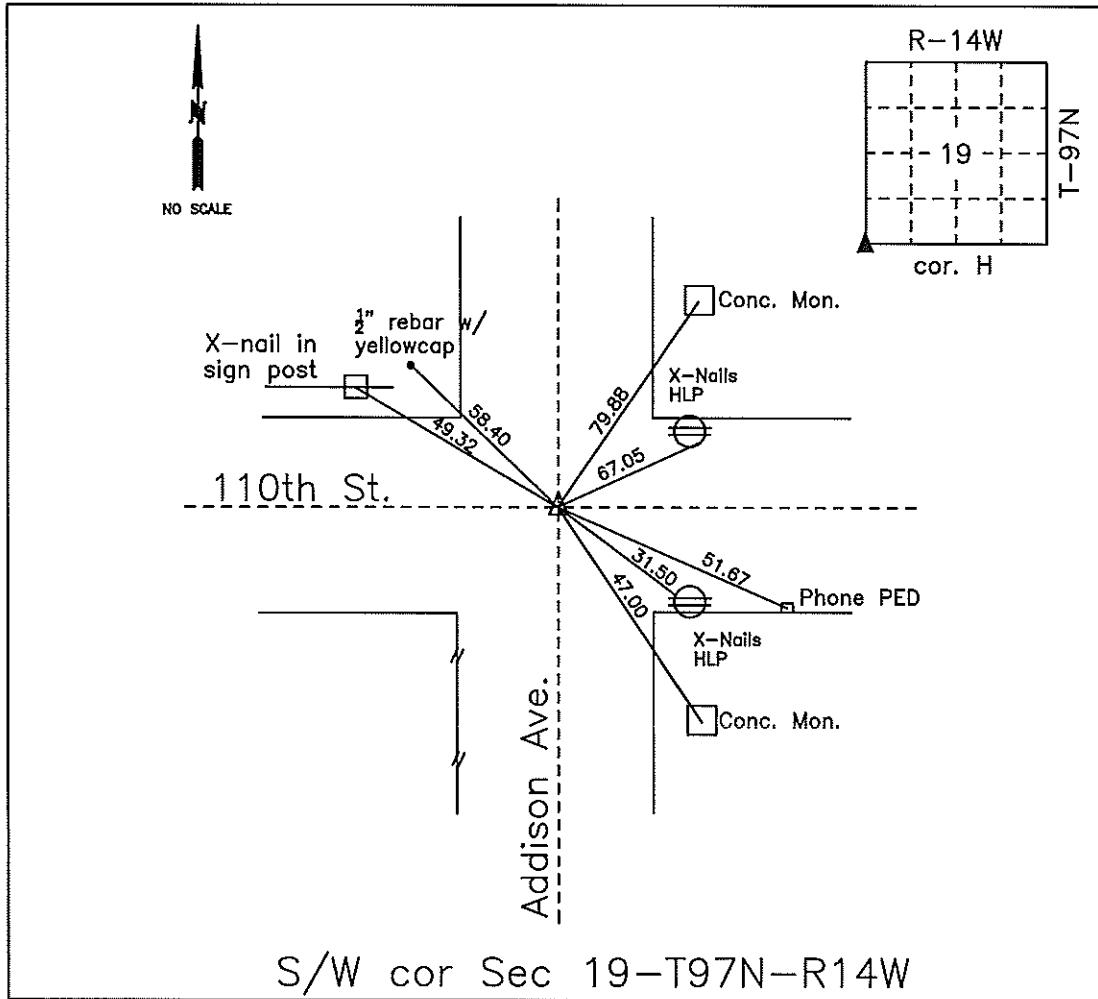


# COUNTY ENGINEER'S SECTION CORNER PRESERVATION RECORD

LAND SURVEY MONUMENT LOCATED IN SECTION 19, TOWNSHIP 97 N  
NORTH, RANGE 14 W, OF THE 5TH P.M. Chickasaw COUNTY, IOWA  
PREVIOUSLY RECORDED January 17, 1996 (Robert L. Halze).



**MONUMENT DESCRIPTION AND NARRATIVE** Previous 1" I.P. was bent. Removed and set 1/2"

I.P. with Yellow Chickasaw Co. Cap. Was able to locate Floyd Co. Concrete monuments NE and SE of  
intersection. All other ties were gone. Retied existing and set four new ties. X-Nails in high-line poles on  
NE/SE sides of intersection. 1/2" I.P. with Yellow Chickasaw Co. Cap and X-Nails in double arrow sign post  
on NW side of intersection.

I AM NOT A REGISTERED LAND SURVEYOR UNDER THE LAWS OF THE STATE OF IOWA □

ROMAN LENSING CHICKASAW CO. DATE: 04/14/15

DOCUMENT No. 01293 FILED FOR RECORD THE 24th DAY OF January, 1996 AT 8:33 O'CLOCK A.M. BOOK 159 Deeds PAGE 492 STATE OF IOWA, CHICKASAW COUNTY. Leitha N. Ross Recorder By Leitha N. Ross Deputy

PREPARED BY MID-WEST LAND SURVEYORS, INC., P.O. BOX 1352, MASON CITY, IOWA 50402-1352, (515)-423-1451  
**UNITED STATES PUBLIC LAND SURVEY CORNER CERTIFICATE**  
 OF

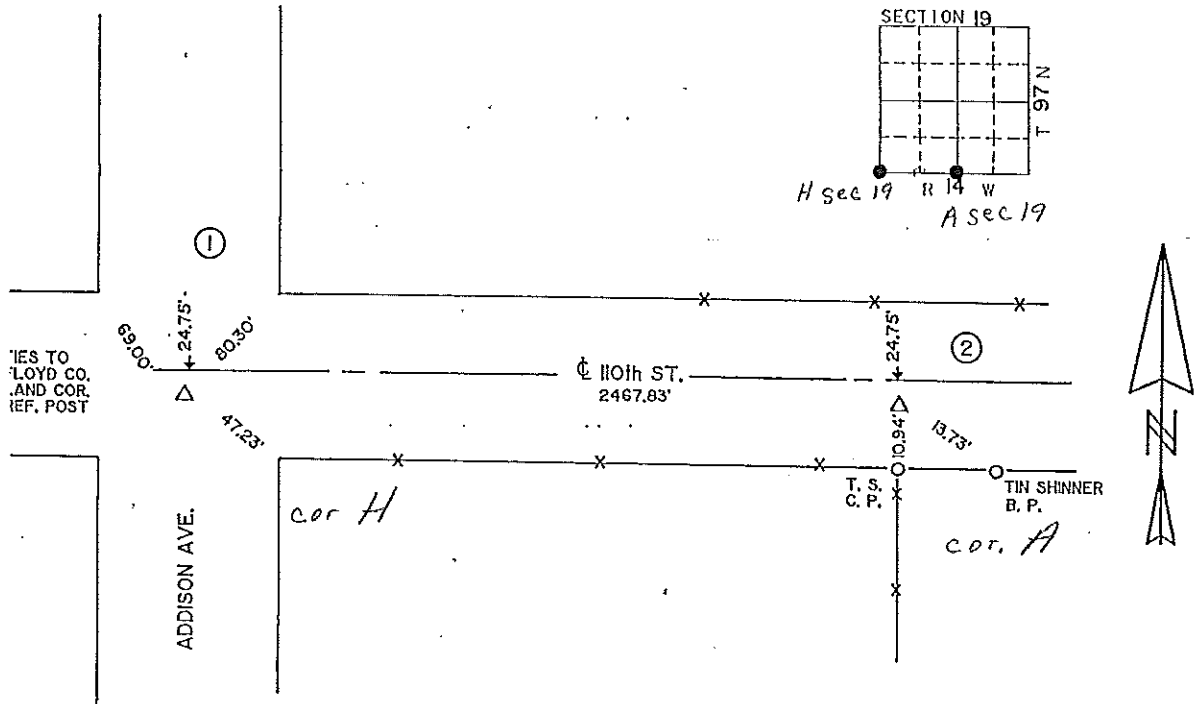
Land Survey Monuments situated in Section 19, Township 97 NORTH, Range 14 WEST, of the Fifth Principal Meridian, CHICKASAW County, Iowa  
 Previously recorded in \_\_\_\_\_ in County Recorder's Office.  
 (book, page, document, number, etc.)

(Show reason for preparing this certificate, the evidence and detailed procedures used in establishing the corner positions and monumentation found or placed.)  
 Monument Description and Remarks: RUTH FARMER

- ① SW CORNER SW FR.  $\frac{1}{4}$  FOUND IRON PIN.
- ② SE CORNER SW FR.  $\frac{1}{4}$  FOUND STONE.

**PLAN-VIEW**

(Show a minimum of three reference ties to durable physical objects, relevant monuments and physical conditions that will enable recovery of corner.)



I hereby certify that the survey work was completed and this certificate was prepared by me or under my direct personal supervision and that I am a duly Registered Land Surveyor under the laws of the State of Iowa.  
 Signature: Robert L. Holze  
 Robert L. Holze  
 Date: 1/17/96 Reg. No. 8656  
 My registration renewal date is December 31, 1997.

List of Corners to be Indexed

Corners	Section	Twp.	Range
① SW SW FR. $\frac{1}{4}$	19	97	14
② SE SW FR. $\frac{1}{4}$	19	97	14

*In Book 6-25-01*