

STEVE BUSSE P.O. BOX 241 508 ELM ST. ALLISON, IOWA 50602 319-267-2519

UNITED STATES PUBLIC LAND SURVEY CORNER CERTIFICATE OF

LAND SURVEY MONUMENTS SITUATED IN SECTION NO. 30, TOWNSHIP NO. 97 NORTH, RANGE NO. 14 WEST OF THE FIFTH PRINCIPAL MERIDIAN, CHICKASAW COUNTY, IOWA.

PREVIOUSLY RECORDED IN N/A

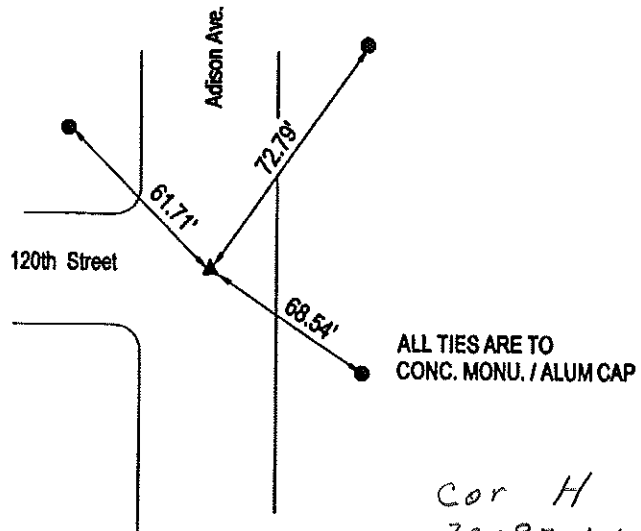
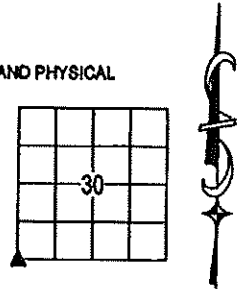
(SHOW REASON FOR PREPARING THIS CERTIFICATE, THE EVIDENCE AND DETAILED PROCEDURES USED IN ESTABLISHING THE CORNER POSITIONS AND MONUMENTATION FOUND OR PLACED.)

MONUMENT DESCRIPTION AND REMARKS:

We did not find certificate recorded for the corner. Found 1 1/4" pipe in center of intersection. Pipe was called for in ties from Floyd County. Used pipe as corner and used in survey in section 30.

PLAN VIEW

(SHOW A MINIMUM OF THREE REFERENCE TIES TO DURABLE PHYSICAL OBJECTS, RELEVANT MONUMENTS AND PHYSICAL CONDITIONS THAT WILL ENABLE RECOVERY OF THE CORNER.)



**SOUTHWEST CORNER
SECTION 30**



I HEREBY CERTIFY THAT THIS LAND SURVEYING DOCUMENT WAS PREPARED AND THE RELATED SURVEY WORK WAS PERFORMED BY ME OR UNDER MY DIRECT PERSONAL SUPERVISION AND THAT I AM A DULY LICENSED LAND SURVEYOR UNDER THE LAWS OF THE STATE OF IOWA.

Steve Busse 1/11/2012
 STEVE BUSSE DATE

LICENSE NUMBER 9018
 MY LICENSE RENEWAL DATE IS DECEMBER 31, 2012
 PAGES OR SHEETS COVERED BY THIS SEAL 1

G.P. = 2" GAS PIPE
 CONC MONU = CONCRETE MONUMENT W/ PIN & ALUM CAP
 "X NAILS" = CROSS NAILS IN WOOD POST
 OPT = PLASTIC TAG (O=ORANGE, Y=YELLOW)
 (00) RECORDED AS

LIST CORNERS TO BE INDEXED			
CORNER	SECTION	TOWNSHIP	RANGE
SOUTHWEST COR.	30	97	14
SOUTHEAST COR.	25	97	15