

Prepared by & Return to: Herold - Reicks Surveying, 10 East Main Street, New Hampton, IA 50659, Ph. 641-994-2725

UNITED STATES PUBLIC LAND SURVEY CORNER CERTIFICATE

Land Survey Monuments situated in Section ²⁹32, Township 97 North, Range 14 West of the Fifth Principal Meridian, Chickasaw County, Iowa. 1., 2.) Not previously recorded in the County Recorder's office.

This certificate is being prepared in compliance with Iowa Code Chapter 355.11 because:

- 1 & 2 There is no certificate on file for this corner.
 There are no longer three valid ties of record.
 There are changes to reference ties of record.
 There is change of monumentation of record.
 To clarify description of record monument (ties).

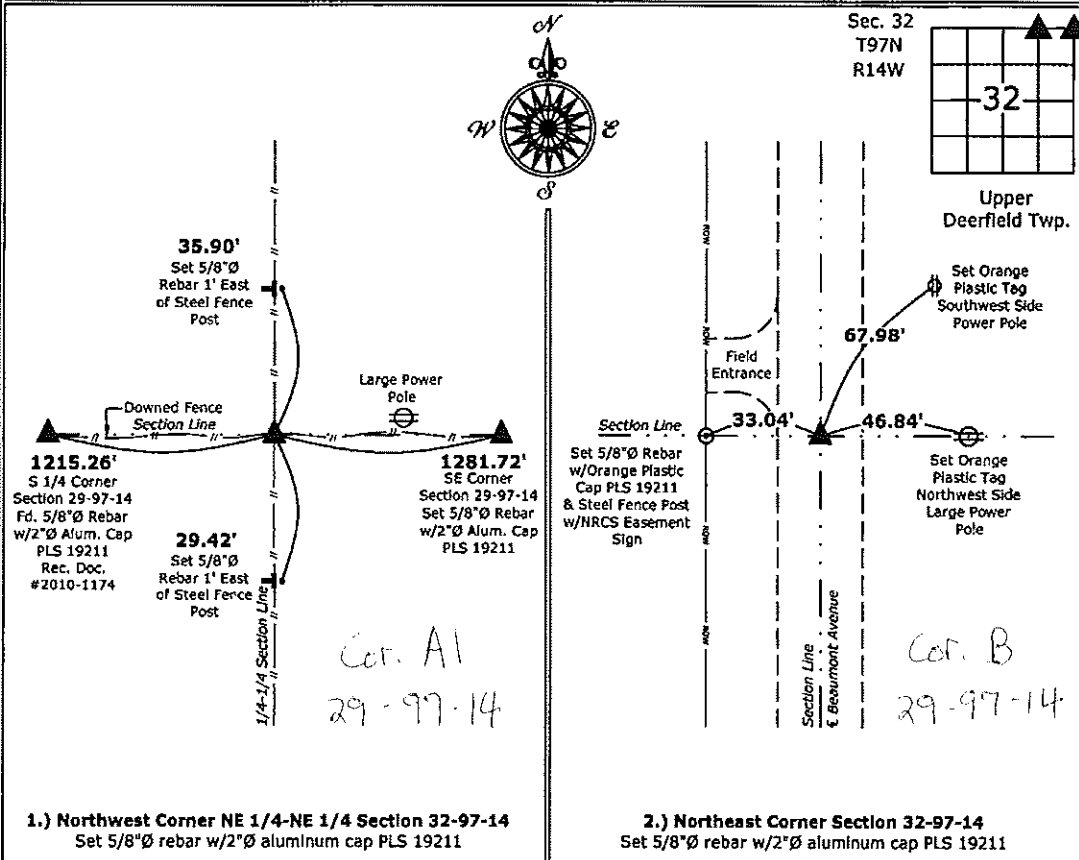
Monument Description and Remarks:

1.) **Northwest Corner NE 1/4-NE 1/4:** Set 5/8"Ø rebar w/2"Ø aluminum cap PLS 19211 at record distance from the Northeast Corner with information obtained from the County Engineers office.

2.) **Northeast Corner:** Set 5/8"Ø rebar w/2"Ø aluminum cap PLS 19211 at the Centerline of Beaumont Avenue and at the Easterly extension of a possession line fence from the West.

PLAN - VIEW

(Show a minimum of three reference ties to durable physical objects, relevant monuments and physical conditions that will enable recovery of the corner.)



1.) **Northwest Corner NE 1/4-NE 1/4 Section 32-97-14**
 Set 5/8"Ø rebar w/2"Ø aluminum cap PLS 19211

2.) **Northeast Corner Section 32-97-14**
 Set 5/8"Ø rebar w/2"Ø aluminum cap PLS 19211



I hereby certify that this land surveying document was prepared and the related survey work was performed by me or under my direct personal supervision and that I am a duly licensed Land Surveyor under the laws of the State of Iowa.

Kirk D. Reicks 1-6-14
 Kirk D. Reicks Date:

License number 19211
 My license renewal date is December 31, 2014.
 Sheets covered by this seal: Individual sheet only

List Corners to be Indexed			
Corners	Section	Twp.	Range
NW-NE-NE	32	97	14
NE	32	97	14

Project Number: 2013-214
 FB: Chickasaw 6, Pgs. 18-19