

MOHN SURVEYING INC. ROGER R. MOHN 1890 GREAT RIVER ROAD LANSING, IOWA 52151 (563) 538-4067

TIES. DWG Bruening Rock Products

SLSI 9-90

UNITED STATES PUBLIC LAND SURVEY CORNER CERTIFICATE

Land Survey Monuments situated in Section 33, Township 97 North, Range 14 West, of the Fifth Principal Meridian, Chickasaw County, Iowa.
Previously recorded in no record on file in County Recorder's Office.
(book, page, document number, etc.)

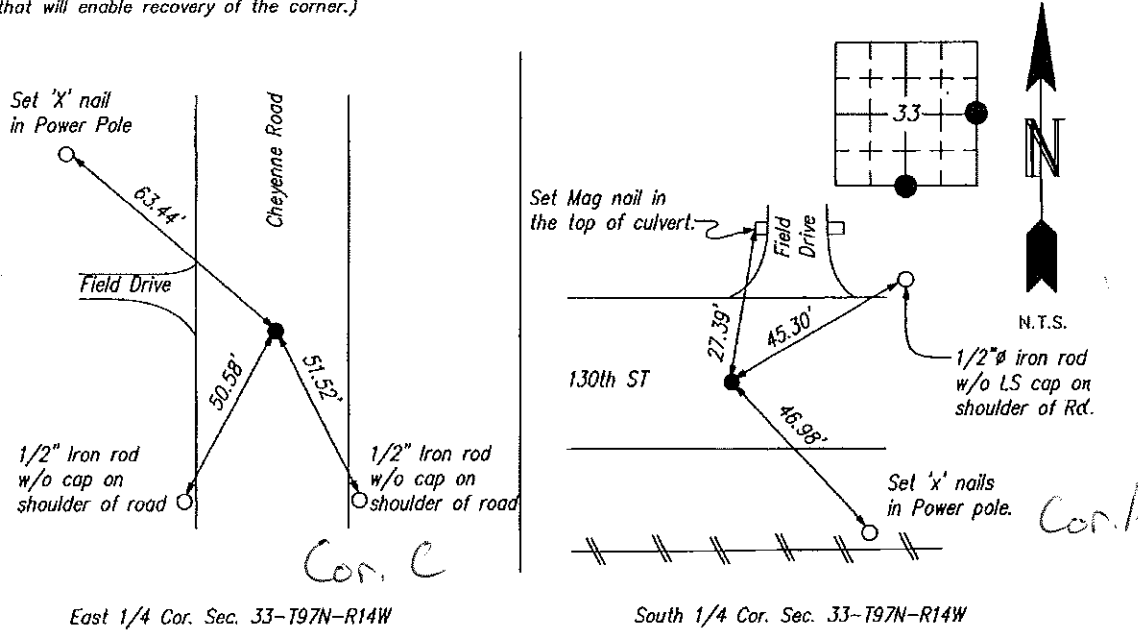
(Show reason for preparing this certificate, the evidence and detailed procedures used in establishing the corner positions and monumentation found or placed.)

Monument Description and Remarks: East 1/4 Corner: Found PK nail in HMA pavement. Found no record of placement history. PK nail as correct corner position.

South 1/4 Corner: Found 5/8" iron bar 2.40' below road surface. Found no record of placement history. Accepted 5/8" iron bar as correct corner position.

PLAN - VIEW

(Show a minimum of three reference ties to durable physical objects, relevant monuments and physical conditions that will enable recovery of the corner.)



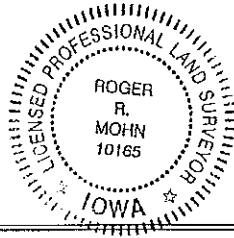
East 1/4 Cor. Sec. 33-T97N-R14W

South 1/4 Cor. Sec. 33-T97N-R14W

I hereby certify that this land surveying document was prepared by me or under my direct personal supervision and that I am a duly Registered Land Surveyor under the laws of the state of Iowa.

Roger R. Mohn 12/30, 2016
ROGER R. MOHN, P.E. & L.S. Iowa Registration No. 10165
My registration expires December 31, 2018

SEAL



Corners	Section	Twp	Range
East 1/4 Cor.	33	97N	14W
South 1/4 Cor.	33	97N	14W