

Chickasaw Co. Recorder  
 Cindy Messersmith  
**Fee Book 2017-0007**  
 01/03/2017 @0959AM  
 SCC SEC COR CERT # Pages: 1  
 Book: Page: \$7.00  
 Total Fees:

MOHN SURVEYING INC. ROGER R. MOHN 1890 GREAT RIVER ROAD LANSING, IOWA 52151 (563) 538-4067  
 TIES, DWG Bruening Rock Products SLSI 9-90

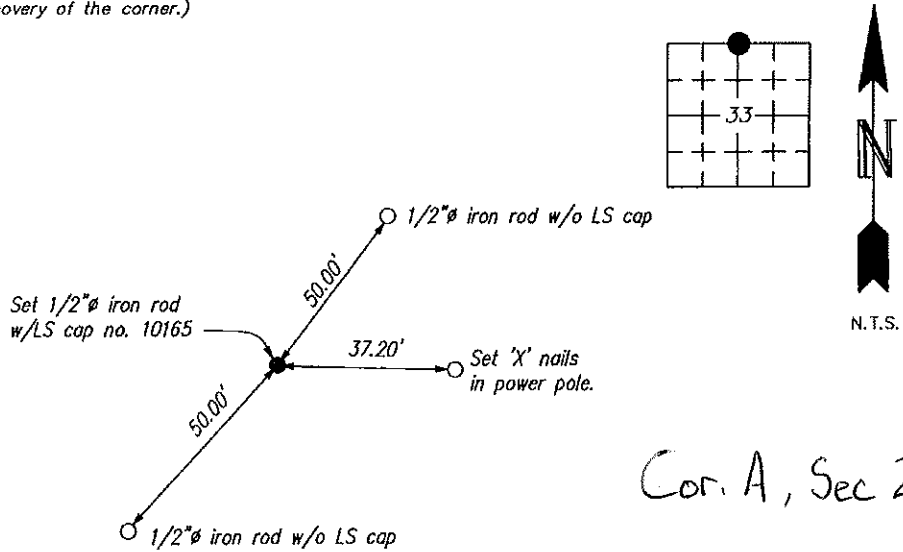
**UNITED STATES PUBLIC LAND SURVEY CORNER CERTIFICATE**

Land Survey Monuments situated in Section 33 <sup>OF</sup> 28, Township 97 North, Range 14 West, of the Fifth Principal Meridian, Chickasaw County, Iowa.  
 Previously recorded in no record on file in County Recorder's Office.  
 (book, page, document number, etc.)

(Show reason for preparing this certificate, the evidence and detailed procedures used in establishing the corner positions and monumentation found or placed.)  
 Monument Description and Remarks: No record of previous corner monumentation could be found. Established corner position at the midpoint of the North line of Section 33. Searched area with magnetic locator and probe but found nothing. Set 1/2" iron rod w/LS cap no. 10165.

**PLAN - VIEW**

(Show a minimum of three reference ties to durable physical objects, relevant monuments and physical conditions that will enable recovery of the corner.)

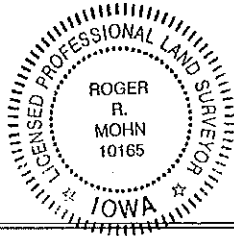


*Cor. A, Sec 28-97-14*

I hereby certify that this land surveying document was prepared by me or under my direct personal supervision and that I am a duly Registered Land Surveyor under the laws of the state of Iowa.

*Roger R. Mohn* 12/30, 2016  
 ROGER R. MOHN, P.E. & L.S. Iowa Registration No. 10165  
 My registration expires December 31, 2018

SEAL



List Corners to be Indexed			
Corners	Section	Twp	Range
North 1/4 Cor.	33	97N	14W