

**UNITED STATES PUBLIC LAND  
SURVEY CORNER CERTIFICATE OF**

Land Survey Monuments situated in Section 27,  
Township 97N, Range 14W of the 5th Principal Meridian,  
Chickasaw County, Iowa.  
Previously recorded in Book (Drawer) N/A, Page  
(Document) N/A, in association with a survey for:  
Ron Dunn

Instrument #: 2020-0514  
03/26/2020 10:35:48 AM Total Pages: 1  
SCC SECTION CORNER CERTIFICATES  
Recording Fee: \$ 7.00  
Shirley Troyna, Recorder, Chickasaw County Iowa



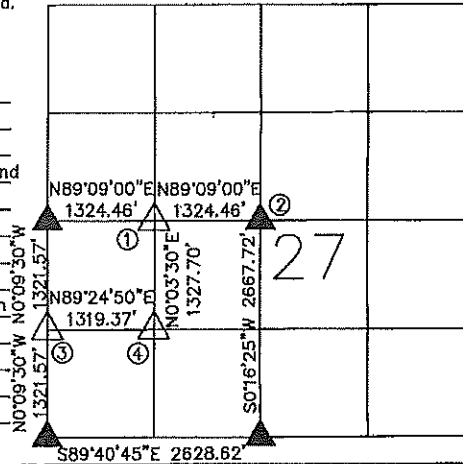
Reason for preparing Certificate:

- There is no Certificate for the corner on file with the County Recorder.
- Corner position differs from that previously recorded.
- The corner monument has been replaced or modified.
- The existing Certificate reference ties are incorrect or changed.

FOR RECORDER'S USE ONLY

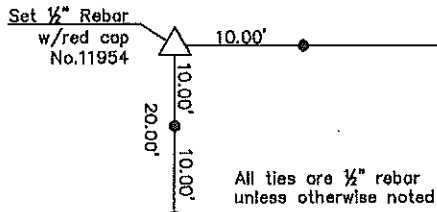
Monument Description and Remarks:

- ① NW CORNER NE1/4-SW1/4 - Set 1/2" Rebar w/Red Cap No.11954 online and midway between W1/4 Corner and Center of Section 27.
- ② Center - Found 8" cut off power pole at tie distances from found 5/8" rebar w/Red Cap No. 15525 referenced in Corner Certificate recorded in Fee Book 2011-1402 in the Office of the Chickasaw County Recorder.
- ③ NW Corner SW1/4-SW1/4 - Set Mag Nail online and midway between the W1/4 Corner and SW Corner of Section 27.
- ④ NE CORNER SW1/4-SW1/4 - Set 1/2" Rebar w/Red Cap No.11954 at aliquot subdivision of SW Quarter of Section 27.



① NW CORNER  
NE1/4-SW1/4

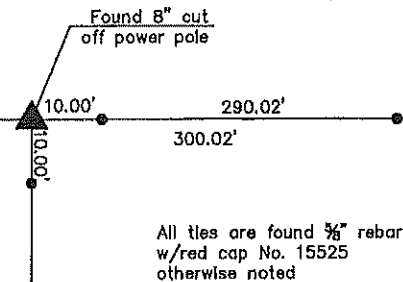
Cor P-27-97-14



All ties are 1/2" rebar unless otherwise noted

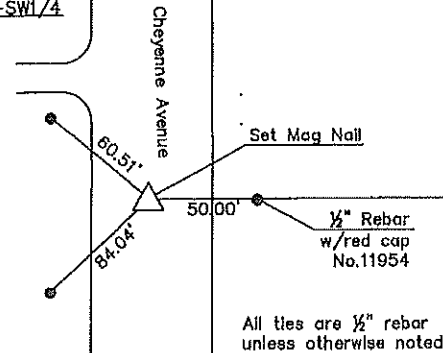
② CENTER

Cor O-27-97-14



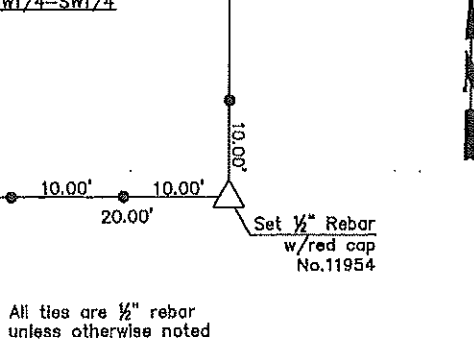
All ties are found 5/8" rebar w/red cap No. 15525 otherwise noted

③ NW CORNER  
SW1/4-SW1/4



All ties are 1/2" rebar unless otherwise noted

④ NE CORNER  
SW1/4-SW1/4



All ties are 1/2" rebar unless otherwise noted

Cor B1-28-97-14

Cor I-27-97-14



Certification:

I hereby certify that this land surveying document was prepared and the related survey work was performed by me or under my direct personal supervision and that I am a duly licensed Land Surveyor under the laws of the State of Iowa

*Daniel J. Johnson* 3-23-20  
Date  
Daniel J. Johnson  
License number 11954  
My current license renewal date is December 31, 2020

**JOHNSON LAND SURVEYING**

9520 200th Street, Davenport, IA 52804  
Ph: (563) 506-9954

Corner Certificate Prepared By:  
Daniel J. Johnson, L.S. #11954

Prepared by & Return to: Herold - Recker Surveying, 19 East Main Street, New Hampton, IA 50658, Ph. 641-394-3725

**UNITED STATES PUBLIC LAND SURVEY CORNER CERTIFICATE**

28

Land Survey Monuments situated in Section 27, Township 97 North, Range 14 West of the Fifth Principal Meridian, Chickasaw County, Iowa. Previously recorded in Bk. 148, Pg. 250 in the County Recorder's office.

This certificate is being prepared in compliance with Iowa Code Chapter 355.11 because:

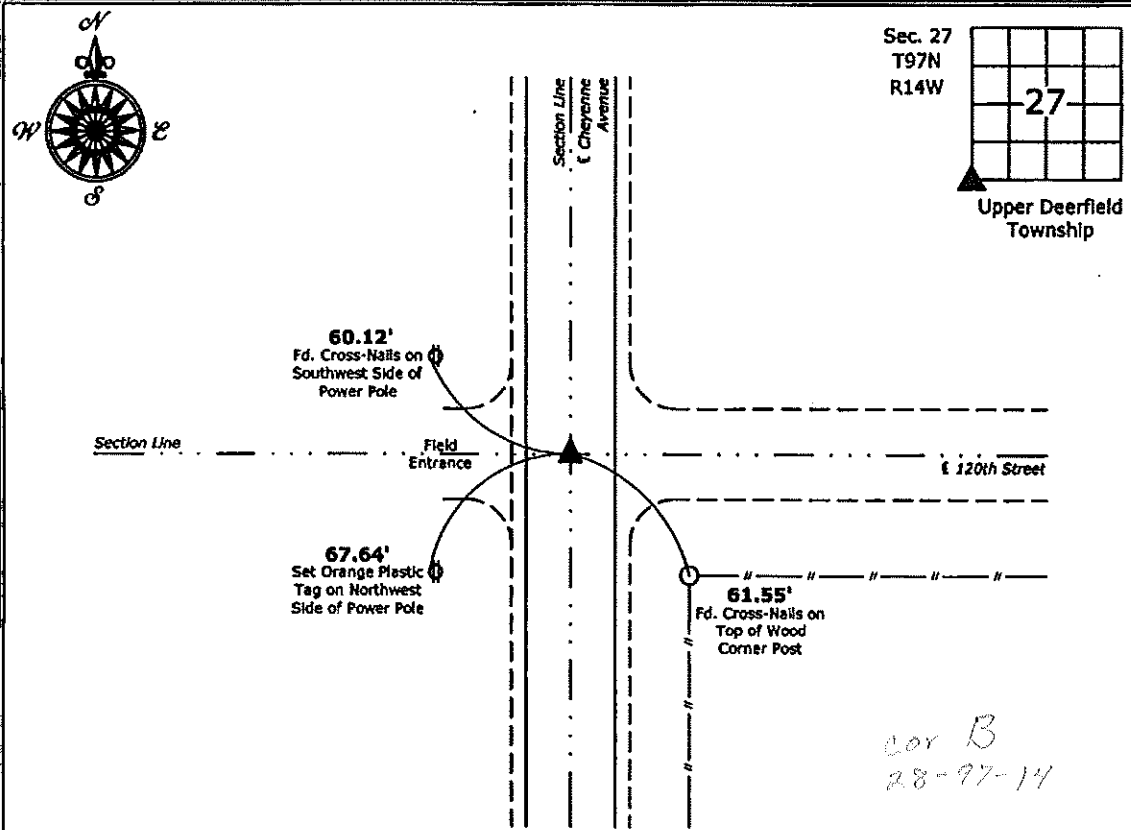
- There is no certificate on file for this corner.
- There are no longer three valid ties of record.
- There are changes to reference ties of record.
- There is change of monumentation of record.
- To clarify description of record monument (ties).

Monument Description and Remarks:

**Southwest Corner:** Fd. MAG Nail w/Stainless Steel Washer PLS 7060 from information obtained on a Survey and Play made by Lyle G. TeKippe on May 10, 2004, recorded in Document #2004-1056, on file in the Chickasaw County Recorder's office, New Hampton, Iowa.

**PLAN - VIEW**

(Show a minimum of three reference ties to durable physical objects, relevant monuments and physical conditions that will enable recovery of the corner.)



**Southwest Corner Section 27-97-14**  
 Fd. MAG Nail w/Stainless Steel Washer PLS 7060



I hereby certify that this land surveying document was prepared and the related survey work was performed by me or under my direct personal supervision and that I am a duly licensed Land Surveyor under the laws of the State of Iowa.

*Paul R. Herold 7-2-13*  
 Paul R. Herold Date:  
 License number 15525  
 My license renewal date is December 31, 2014.  
 Sheets covered by this seal: Individual sheet only

List Corners to be Indexed			
Corners	Section	Twp.	Range
SW	27	97	14
Project Number: 2013-115			
FB: Chickasaw County 5, Pg. 52			

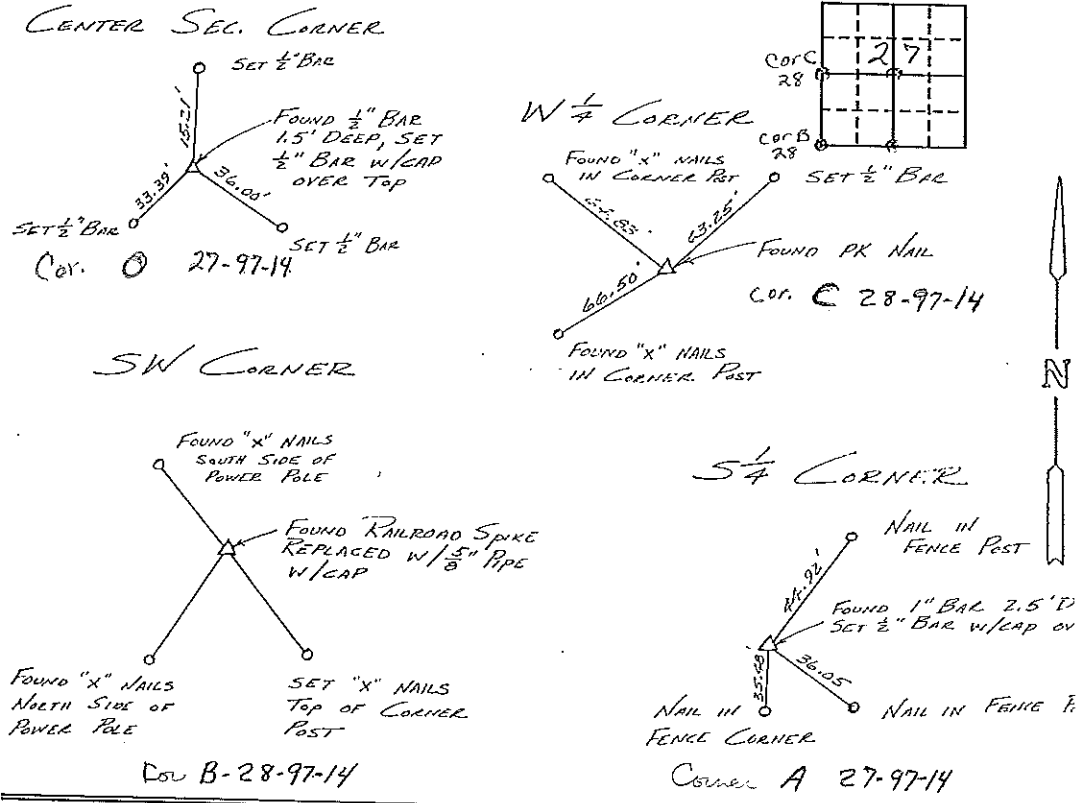
**UNITED STATES PUBLIC LAND SURVEY CORNER CERTIFICATE**  
OF

Land Survey Monuments situated in Section 27, Township 97, Range 14,  
 of the Fifth Principal Meridian, CHICKASAW County, Iowa.  
 Previously recorded in DOES NOT APPLY in County Recorder's Office.  
(book, page, document number, etc.)

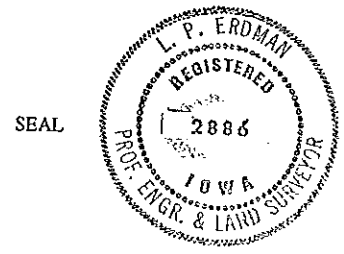
(Show reason for preparing this certificate, the evidence and detailed procedures used in establishing the corner positions and monumentation found or placed.)  
 Monument Description and Remarks: \_\_\_\_\_  
 \_\_\_\_\_  
 \_\_\_\_\_  
 \_\_\_\_\_

**PLAN - VIEW**

(Show a minimum of three reference ties to durable physical objects, relevant monuments and physical conditions that will enable recovery of the corner.)



I hereby certify that the survey work was completed and this certificate was prepared by me or under my direct personal supervision and that I am a duly registered land surveyor under the laws of the state of Iowa.  
 Signature: L. P. Erdman  
 Name typed or printed: L. P. ERDMAN  
 Date: 22 MAY 1991 Reg. No. 2886



Corners	List Corners to be Indexed Section	Twp	Range
S 1/4	27	97	14
W 1/4	"	"	"
SW	"	"	"
CENTER	"	"	"

*Placed in the Book 5/91*