



Prepared by: Erdman Engineering, P.C., 708 Commerce Drive, P.O. Box 246, Decorah, Iowa, (563)382-4194

UNITED STATES PUBLIC LAND SURVEY CORNER CERTIFICATE
 OF

Land Survey Monuments situated in Section 36, Township 97 North, Range 14 West, of the Fifth Principal Meridian, Chickasaw County, Iowa, Previously recorded in does not apply in the County Recorder's Office.

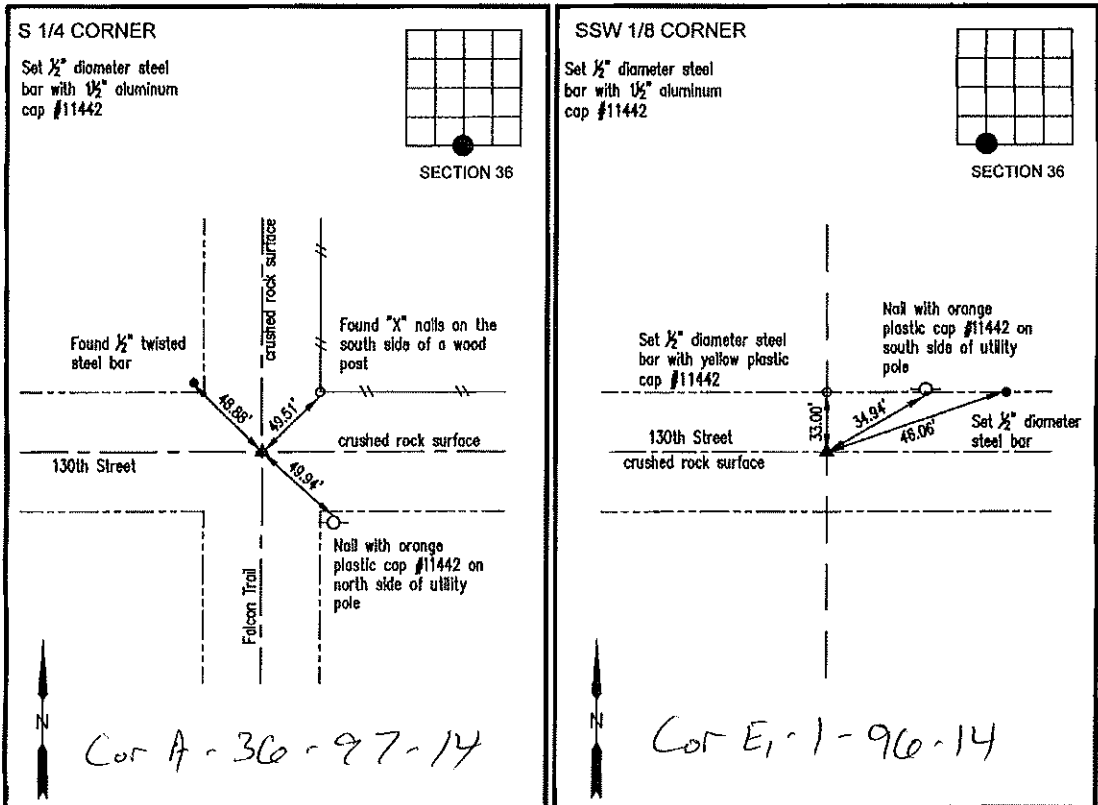
Monument Description and Remarks:

This certificate is prepared in accordance with Section 355.11 of the Code of Iowa. No previous certificates have been filed for these corner locations.

S 1/4 Corner: We found a steel bar with yellow plastic cap (number on cap is not legible) at the approximate centerline centerline intersection of the county roads. We used the monument as the S 1/4 Corner of Section 36, Township 97 North, Range 14 West.

SSW 1/8 Corner: We found no record of the SSW 1/8 Corner being set. We found no evidence of a monument in the field other than the county road. We found the SW Corner and the S 1/4 Corner. We set a 1/2" diameter steel bar with 1 1/2" aluminum cap #11442 on line and midway between the SW Corner and the S 1/4 Corner as the SSW 1/8 Corner of Section 36, Township 97 North, Range 14 West.

PLAN-VIEW
 (NOT TO SCALE)



I hereby certify that this land surveying document was prepared and the related survey work was performed by me or under my direct personal supervision and that I am a duly licensed Land Surveyor under the laws of the State of Iowa.



Lindsay Erdman 10/16/20
 Lindsay Erdman, P.E. & P.L.S. Date
 Licensed Professional Land Surveyor
 Iowa License Number 11442
 My License renewal date is December 31, 2020
 Pages or sheets covered by this seal: THIS SHEET ONLY

List Corner(s) to be Indexed

Corner(s)	Section	Township	Range
S 1/4	36	97N	14W
SSW 1/8	36	97N	14W

ERDMAN ENGINEERING, P.C.
 CIVIL ENGINEERING & LAND SURVEYING
 Decorah, Iowa