

Section 2-94-12
As referred to in
Engr. Tie Book

SLS19

UNITED STATES PUBLIC LAND SURVEY CORNER CERTIFICATE

OF 2

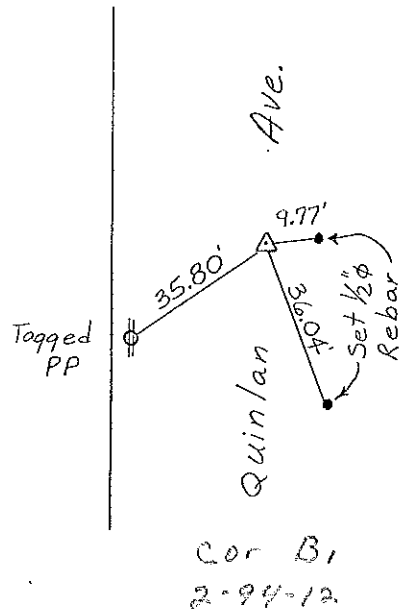
Land Survey Monuments situated in Section 1, Township 94 NORTH, Range 12 WEST, of the Fifth Principal Meridian, CHICKASAW County, Iowa
Previously recorded in NONE in County Recorder's Office

(Show reason for preparing this certificate, the evidence and detailed procedures used in establishing the corner positions and monument found or placed.)

Monument Description and Remarks: NW CORNER, SW 1/4-SW 1/4, SECTION 1-T94N-R12
Set 1/2" φ Rebar w/cap @ Midpoint between SW Corner and
W 1/4 Corner of Section.
SW CORNER, SECTION 1-T94N-R12W: Found Bent Spike,
replaced with 1/2" φ Rebar w/cap.

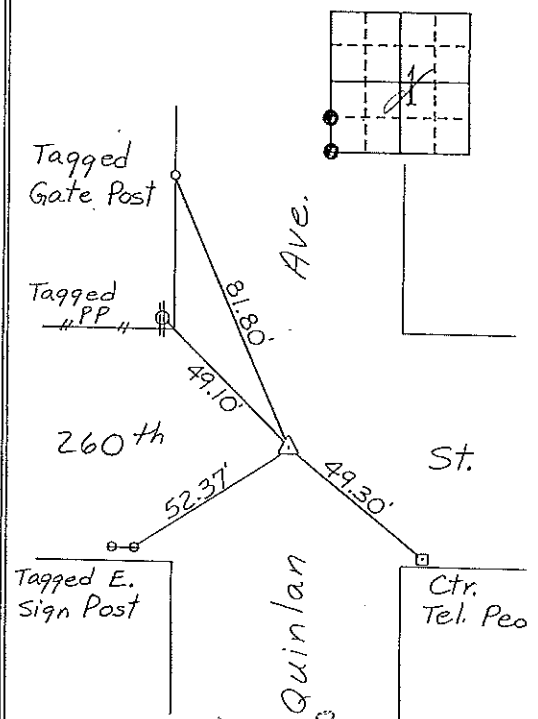
PLAN - VIEW

(Show a minimum of three reference ties to durable physical objects, relevant monuments and physical conditions that will ensure recovery of the corner.)



Cor B,
2-94-12

NW CORNER
SW 1/4-SW 1/4, SECTION 1-T94N-R12W



Cor B
2-94-12

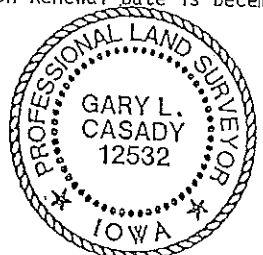
SW CORNER, SECTION 1-T94N-R1

I hereby certify that the survey work was completed and this certificate was prepared by me or under my direct personal supervision and that I am a duly registered land surveyor under the laws of the state of Iowa.

Signature: Gary L. Casady
Name typed or printed: Gary L. Casady
Date: 7-21-94 Reg. No. 12532
My Registration Renewal Date is December 31, 1994

Corners	Section	Twp	Range
NW Cor.	1	94N	12
SW 1/4-SW 1/4	1	94N	12
Cor B, 2-94-12			
SW	1	94N	12
Cor B			
	2-94-12		

SEAL



Placed in tie book
8/19/94