

UNITED STATES PUBLIC LAND SURVEY CORNER CERTIFICATE

OF

Land Survey Monuments situated in Section 12, Township 94N, Range 12W, of the Fifth Principal Meridian, CHICKASAW County, Iowa. Previously recorded in (NONE) in County Recorder's Office.

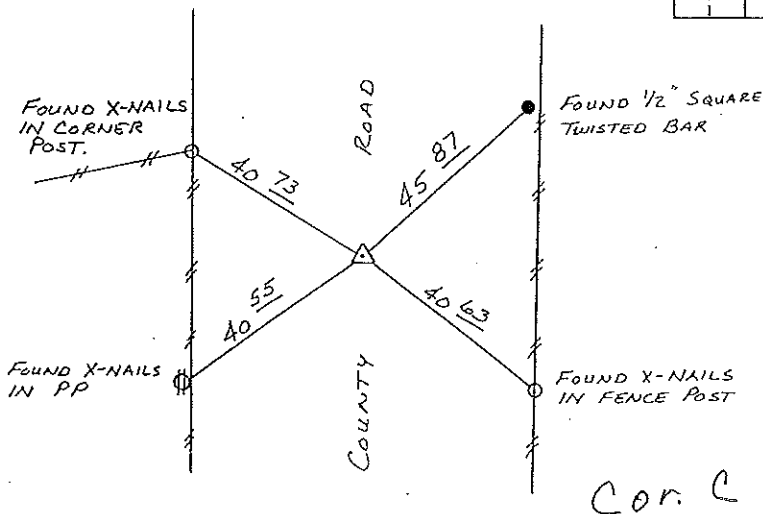
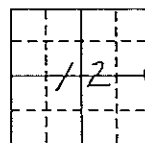
(book, page, document number, etc.)

(Show reason for preparing this certificate, the evidence and detailed procedures used in establishing the corner positions and monumentation found or placed.)

Monument Description and Remarks: FOUND 3 1/2" Ø I.D.O.T. ALUMINUM CAP
1 3/4" DEEP - RAISED WITH 1/2" Ø REBAR WITH CAP.

PLAN - VIEW

(Show a minimum of three reference ties to durable physical objects, relevant monuments and physical conditions that will enable recovery of the corner.)



E 1/4 CORNER SECTION 12 - T94N - R12W

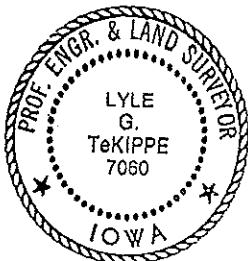
I hereby certify that the survey work was completed and this certificate was prepared by me or under my direct personal supervision and that I am a duly registered land surveyor under the laws of the state of Iowa.

Signature: Lyle G. TeKippe
Name typed or printed: Lyle G. TeKippe

Date: 1-9-92 Reg. No. 7060

Corners	List Corners to be Indexed		
	Section	Twp	Range
E 1/4	12	94N	12W

Placed in Top Box 1/9/92



SEAL