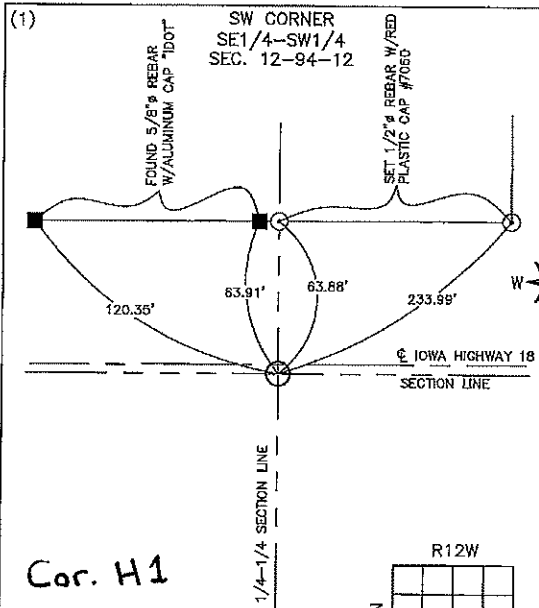


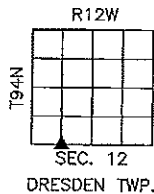
Instr. Number: 2021-0834  
 Recorded: 4/19/2021 at 3:30:06.0 PM  
 Pages 1  
 County Recording Fee: \$7.00  
 Iowa E-Filing Fee: \$3.13  
 Combined Fee: \$10.13  
 Revenue Tax:  
 Shirley Troyna RECORDER  
 Chickasaw County, Iowa

PREPARED BY/RETURN TO: FEHR GRAHAM, 128 S. VINE STREET, WEST UNION, IA 52175 - PH: (563)422-5131

UNITED STATES PUBLIC LAND SURVEY CORNER CERTIFICATE  
 CHICKASAW COUNTY, IOWA  
 SECTION 12-T94N-R12W



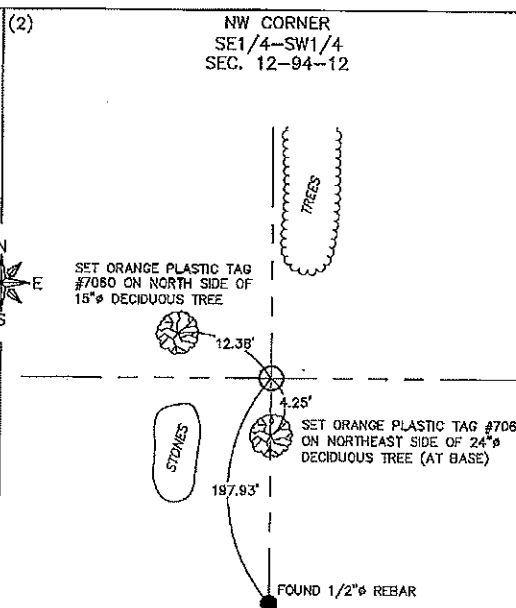
Cor. H1  
 Sec. 12-94-12



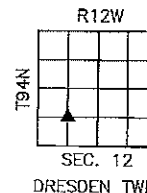
PREVIOUSLY RECORDED:  
 NO PREVIOUS CERTIFICATE ON FILE.

PURPOSE OF CERTIFICATE:  
 SET MONUMENT ONLINE BETWEEN THE S1/4 CORNER AND THE SW CORNER OF SECTION AT THE PROJECTED INTERSECTION OF THE EAST LINE OF PAR VIEW ESTATES WHICH IS CALLED OUT AS BEING THE EAST LINE OF THE SW1/4-SW1/4 OF SECTION ON THE PLAT OF PAR VIEW ESTATES, RECORDED IN BOOK 124 ON PAGES 493-506, IN THE CHICKASAW COUNTY RECORDER'S OFFICE.

MONUMENT DESCRIPTION AND ESTABLISHMENT:  
 SET MAG NAIL W/SSW #7060



Cor. I  
 Sec. 12-94-12



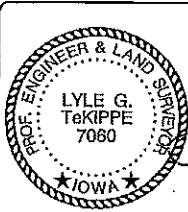
PREVIOUSLY RECORDED:  
 NO PREVIOUS CERTIFICATE ON FILE.

PURPOSE OF CERTIFICATE:  
 FOUND MONUMENT CALLED FOR ON THE PLAT OF PAR VIEW ESTATES, RECORDED IN BOOK 124 ON PAGES 493-506, IN THE CHICKASAW COUNTY RECORDER'S OFFICE.

MONUMENT DESCRIPTION AND ESTABLISHMENT:  
 FOUND 2" IRON PIPE W/ALUMINUM CAP #2886

CORNERS TO BE INDEXED

CORNER	SECTION	TOWNSHIP	RANGE
(1) SW of SE1/4-SW1/4	12	94N	12W
(2) NW of SE1/4-SW1/4	12	94N	12W



I hereby certify that this land surveying document was prepared and the related survey work was performed by me or under my direct personal supervision and that I am a duly licensed Land Surveyor under the laws of the State of Iowa.

*Lyle G. TeKippe* 4-19-21  
 Lyle G. TeKippe, P.E. & P.L.S. Date  
 License Number: 7080  
 My license renewal date is December 31, 2022.  
 Sheets covered by this seal: SHEET 1

**FEHR GRAHAM**  
 ENGINEERING & ENVIRONMENTAL  
 © 2021 FEHR GRAHAM

ILLINOIS  
 IOWA  
 WISCONSIN

G:\CS\21\21-279-LS-RENO\12-94-12\21.dwg

JOB NUMBER:  
 21-279

SHEET NUMBER:  
 1 of 1