

Prepared by & Return to: Harold - Reicks Surveying, 10 East Main Street, New Hampton, IA 50659, Ph. 641-394-2725

UNITED STATES PUBLIC LAND SURVEY CORNER CERTIFICATE

Land Survey Monuments situated in Section 12, Township 94 North, Range 12 West of the Fifth Principal Meridian, Chickasaw County, Iowa. 1.) Previously recorded in Bk. 162, Pg. 93, in the County Recorder's office. 2.) Previously recorded in Bk. 159, Pg. 313, in the County Recorder's office.

This certificate is being prepared in compliance with Iowa Code Chapter 355.11 because:

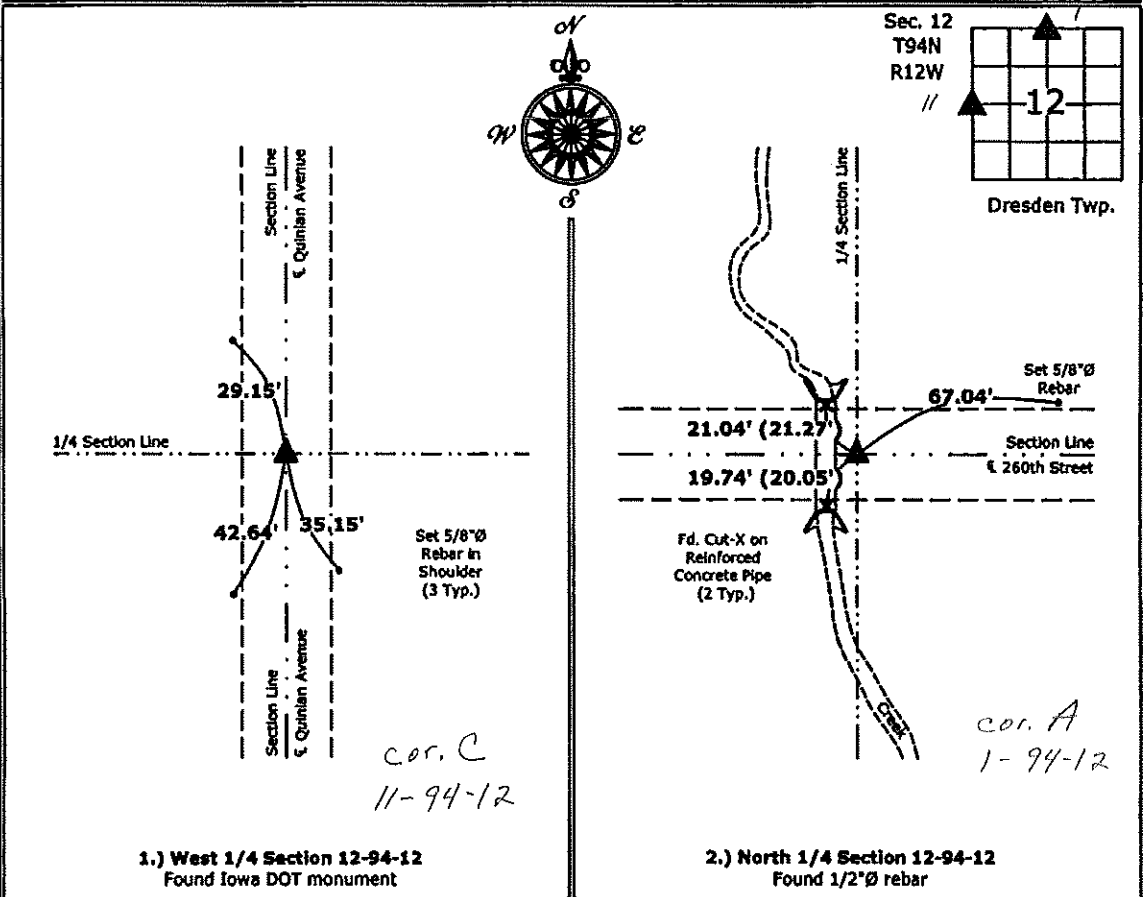
- There is no certificate on file for this corner.
- 1 & 2 There are no longer three valid ties of record.
- 2 There are changes to reference ties of record.
- There is change of monumentation of record.
- To clarify description of record monument (ties).

Monument Description and Remarks:

- 1.) **West 1/4 Corner:** Found Iowa DOT monument with information obtained from a previous section corner certificate.
- 2.) **North 1/4 Corner:** Found 1/2"Ø rebar with information obtained from a previous section corner certificate.

PLAN - VIEW

(Show a minimum of three reference ties to durable physical objects, relevant monuments and physical conditions that will enable recovery of the corner.)



I hereby certify that this land surveying document was prepared and the related survey work was performed by me or under my direct personal supervision and that I am a duly licensed Land Surveyor under the laws of the State of Iowa.

Kirk D. Reicks 2-4-13
 Kirk D. Reicks Date:
 License number 19211
 My license renewal date is December 31, 2014.
 Sheets covered by this seal: Individual sheet only

List Corners to be Indexed			
Corners	Section	Twp.	Range
W 1/4	12	94	12
N 1/4	12	94	12

Project Number: 2012-230
 FB: Fredericksburg 1, Pgs. 3, 4

Section 1-94-12
 As referred to in
 Engg Tie Book

UNITED STATES PUBLIC LAND SURVEY CORNER CERTIFICATE

OF 1

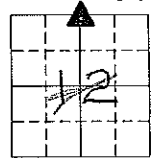
Land Survey Monuments situated in Section 12, Township 9A North, Range 12 West, of the Fifth Principal Meridian, CHICKASAW County, Iowa
 Previously recorded in NONE in County Recorder's Office
(book, page, document number, etc.)

(Show reason for preparing this certificate, the evidence and detailed procedures used in establishing the corner positions and monumentation found or placed.)

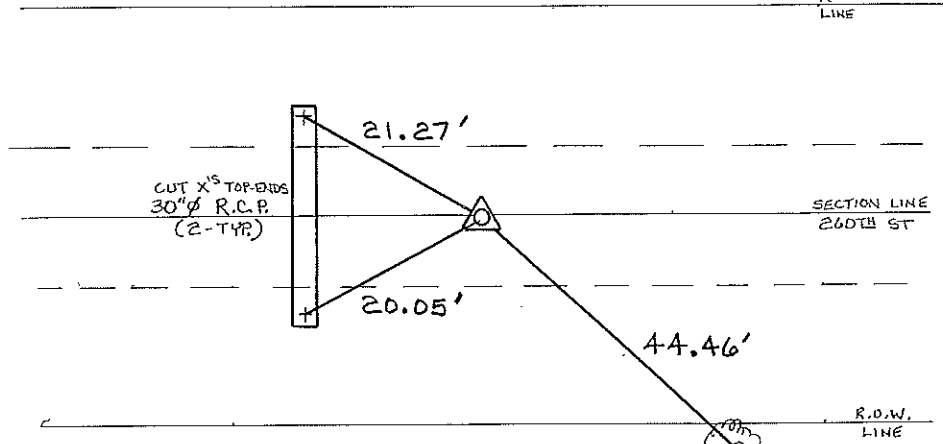
Monument Description and Remarks: N 1/4 CORNER SECTION 12 T94N R12W:
FOUND 30d NAIL w/FLAGGING TYPICAL TO THIS SECTION (NE CORNER), REPLACED
WITH A 1/2" Ø REBAR w/CAP 7060.

PLAN - VIEW

(Show a minimum of three reference ties to durable physical objects, relevant monuments and physical conditions that will enable recovery of the corner.)



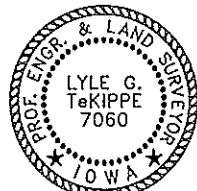
R.O.W.
LINE



Cor A
 1-94-12

I hereby certify that the survey work was completed and this certificate was prepared by me or under my direct personal supervision and that I am a duly registered land surveyor under the laws of the state of Iowa.

Signature: Lyle G. TeKippe
 Lyle G. TeKippe
 Date: 11-14-95 Reg. No. 7060
 My Registration Renewal Date is December 31, 1996



Seal

List Corners to be Indexed			
Corners	Section	Twp.	Range
N 1/4	12	94N	12W

Corner A 1-94-12
 Placed in tie book
 12/14/95