

Section 1-94-12
As referred to in
Engr. Tie Book

SLSI 9-90

UNITED STATES PUBLIC LAND SURVEY CORNER CERTIFICATE

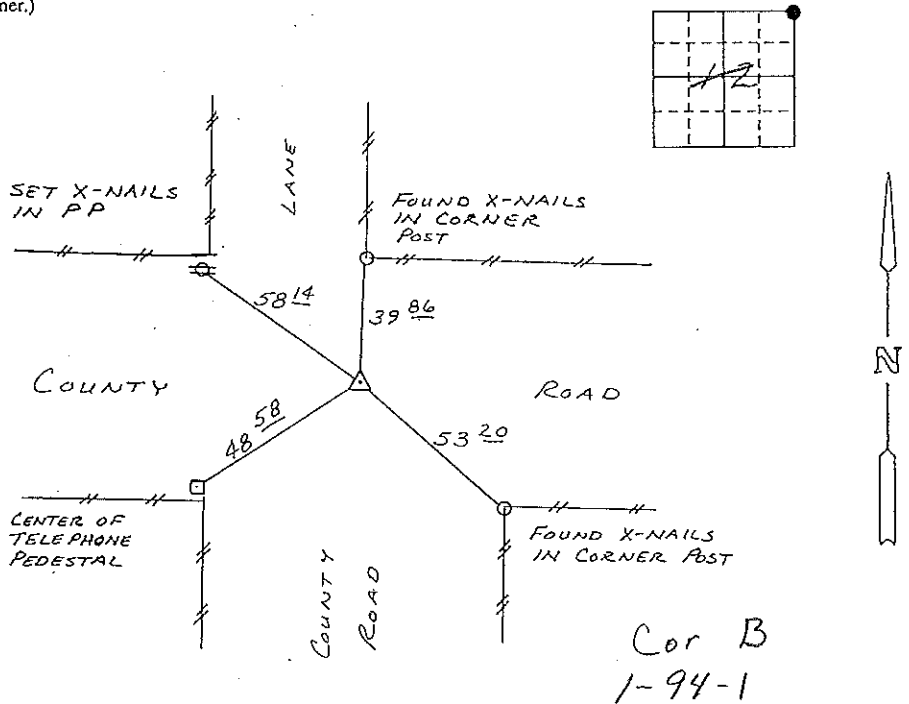
OF,
Land Survey Monuments situated in Section 12, Township 94N, Range 12W, of the Fifth Principal Meridian, CHICKASAW County, Iowa.
Previously recorded in (NONE) in County Recorder's Office.
(book, page, document number, etc.)

(Show reason for preparing this certificate, the evidence and detailed procedures used in establishing the corner positions and monumentation found or placed.)

Monument Description and Remarks: FOUND 30^d SPIKE FROM COUNTY ENGINEER'S TIES.

PLAN - VIEW

(Show a minimum of three reference ties to durable physical objects, relevant monuments and physical conditions that will enable recovery of the corner.)



NE CORNER SECTION 12-T94N-R12W

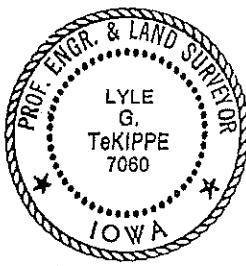
I hereby certify that the survey work was completed and this certificate was prepared by me or under my direct personal supervision and that I am a duly registered land surveyor under the laws of the state of Iowa.

Signature: Lyle G. TeKippe
Name typed or printed: Lyle G. TeKippe
Date: 1-9-92 Reg. No. 7060

Corners	List Corners to be Indexed		
	Section	Twp	Range
NE	12	94N	12W

Placed in
Tie Book
1/92

SEAL



'County Engineer's Copy'