

Prepared by & Return to: Herold - Reicks Surveying, 10 East Main Street, New Hampton, IA 50659, Ph. 641-394-2725

**UNITED STATES PUBLIC LAND SURVEY CORNER CERTIFICATE**

Land Survey Monuments situated in Section 13, Township 94 North, Range 12 West of the Fifth Principal Meridian, Chickasaw County, Iowa. Not previously recorded in the County Recorder's office.

This certificate is being prepared in compliance with Iowa Code Chapter 355.11 because:

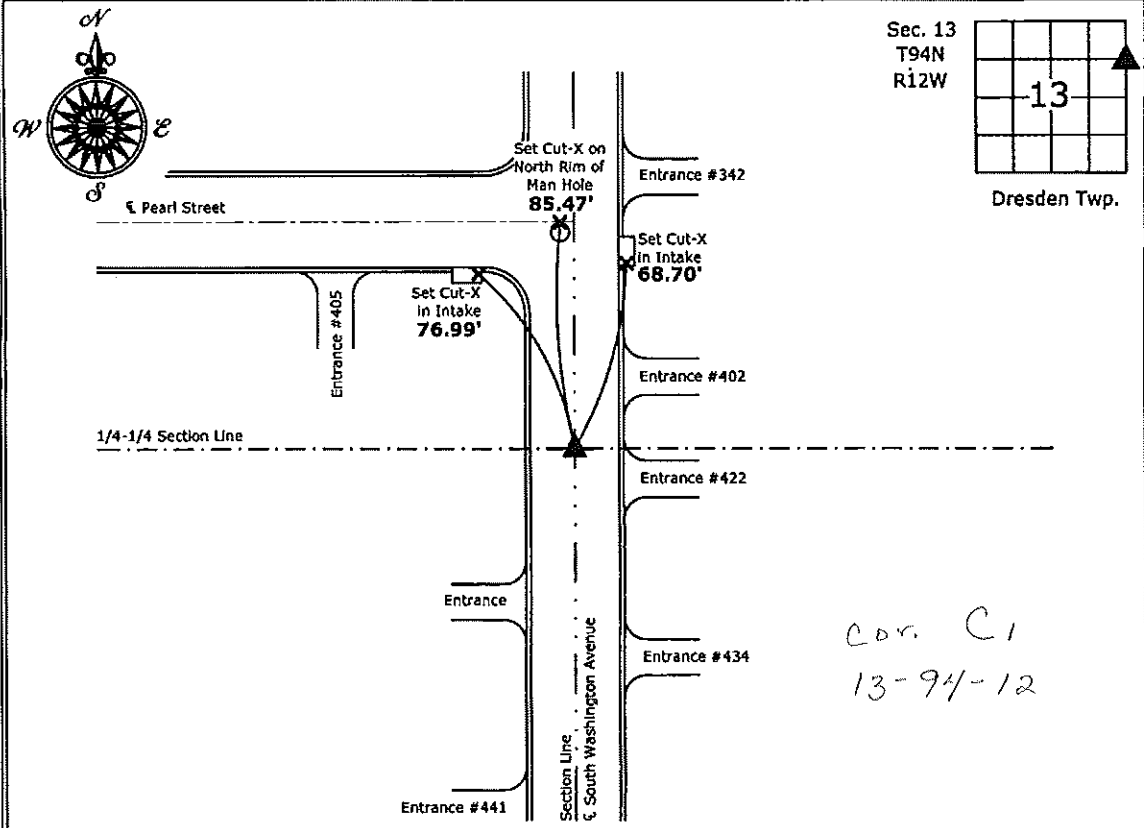
- There is no certificate on file for this corner.
- There are no longer three valid ties of record.
- There are changes to reference ties of record.
- There is change of monumentation of record.
- To clarify description of record monument (ties).

Monument Description and Remarks:

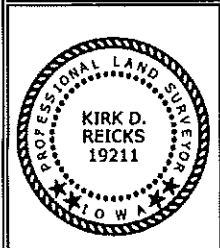
**Northeast Corner SE 1/4-NE 1/4:** Set Survey Mark Nail w/Stainless Steel Washer PLS 19211 equidistant and online between the Northeast and East 1/4 Corners of Section 13.

**PLAN - VIEW**

(Show a minimum of three reference ties to durable physical objects, relevant monuments and physical conditions that will enable recovery of the corner.)



**Northeast Corner SE 1/4-NE 1/4 Section 13-94-12**  
 Set Survey Mark Nail w/Stainless Steel Washer PLS 19211



I hereby certify that this land surveying document was prepared and the related survey work was performed by me or under my direct personal supervision and that I am a duly licensed Land Surveyor under the laws of the State of Iowa.

*Kirk D. Reicks* 8-23-12  
 Kirk D. Reicks Date:

License number 19211  
 My license renewal date is December 31, 2012.  
 Sheets covered by this seal: Individual sheet only

List Corners to be Indexed			
Corners	Section	Twp.	Range
NE-SE-NE	13	94	12

Project Number: 2012-119  
 FB: Fredericksburg 1, Pg. 2