

UNITED STATES PUBLIC LAND SURVEY CORNER CERTIFICATE

OF

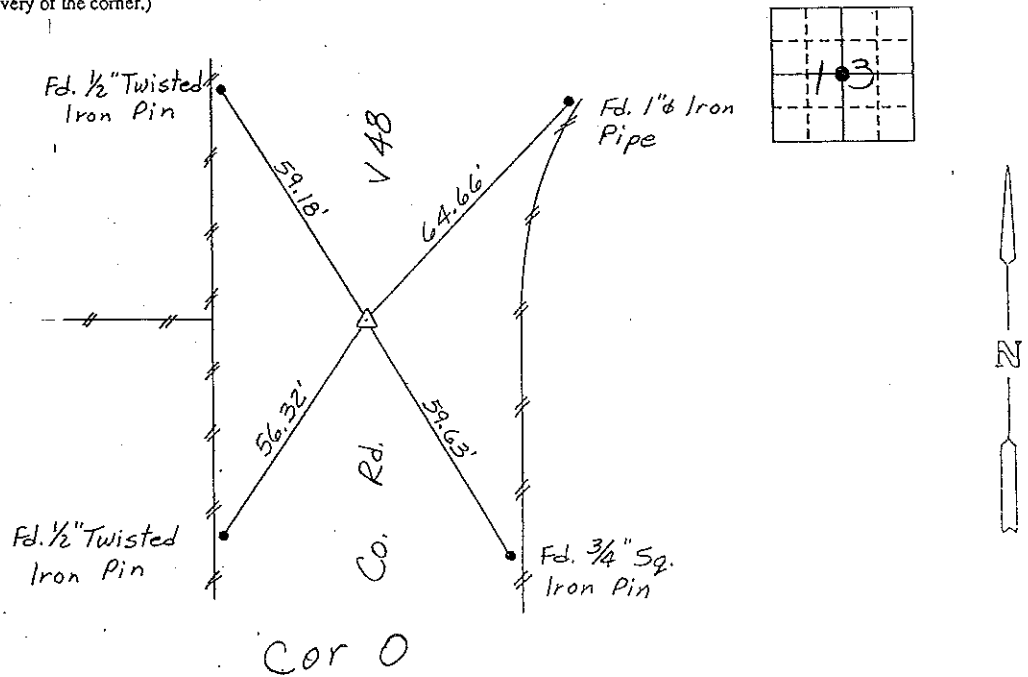
Land Survey Monuments situated in Section 13, Township 94N, Range 12W, of the Fifth Principal Meridian, CHICKASAW County, Iowa.
Previously recorded in (NONE) in County Recorder's Office.
(book, page, document number, etc.)

(Show reason for preparing this certificate, the evidence and detailed procedures used in establishing the corner positions and monumentation found or placed.)

Monument Description and Remarks: CENTER OF, SECTION 13-T94N-R12W:
SET PK NAIL FROM TIES.

PLAN - VIEW

(Show a minimum of three reference ties to durable physical objects, relevant monuments and physical conditions that will enable recovery of the corner.)



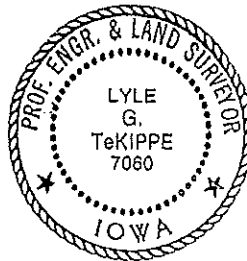
CENTER OF SECTION 13-T94N-R12W

I hereby certify that the survey work was completed and this certificate was prepared by me or under my direct personal supervision and that I am a duly registered land surveyor under the laws of the state of Iowa.

Signature: Lyle G. TeKippe
Name typed or printed: Lyle G. TeKippe
Date: 9-25-92 Reg. No. 7060

Comers	List Corners to be Indexed Section	Twp	Range
Center	13	94N	12W

SEAL



Placed in tie book 10/92