

UNITED STATES PUBLIC LAND SURVEY CORNER CERTIFICATE

OF

Land Survey Monuments situated in Section 13¹¹, Township 94N, Range 12W of the Fifth Principal Meridian, CHICKASAW County, Iowa.

Previously recorded in Book 160, Page 420 - Book 150, Page 323 in County Recorder's Office.
(book, page, document number, etc.)

(Show reason for preparing this certificate, the evidence and detailed procedures used in establishing the corner positions and monumentation found or placed.)

Monument Description and Remarks: NW CORNER: Replaced previously found Nail stem 5" deep in ACC with a Survey Mark Nail/IDOT Sec. Cor. washer, 1.75'+/- South of US 18 per previous cert of record Book 160, Page 420 after HMA resurfacing project NHSX-018-7(62)--3H-19.

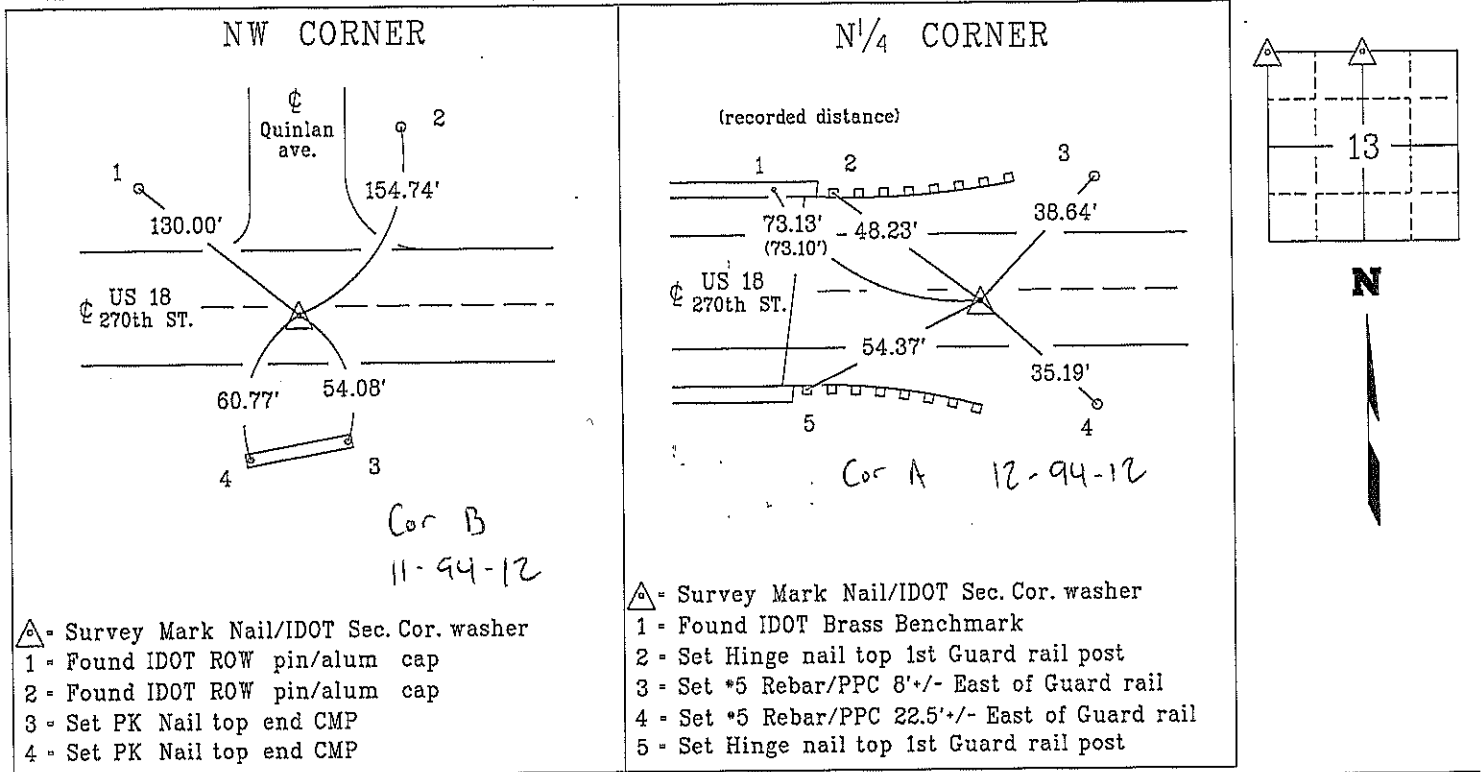
Reason for cert: Monumentation and ties have changed.

N¹/₄ CORNER: Replaced previously found P-K Nail with a Survey Mark Nail/IDOT Sec. Cor. washer, 4.35'+/- South of US 18 per previous cert of record Book 150, Page 323 after HMA resurfacing project NHSX-018-7(62)--3H-19.

Reason for cert: Monumentation and ties have changed.

PLAN - VIEW

(Show a minimum of three reference ties to durable physical objects, relevant monuments and physical conditions that will enable recovery of the corner.)



- ▲ - Survey Mark Nail/IDOT Sec. Cor. washer
- 1 - Found IDOT ROW pin/alum cap
- 2 - Found IDOT ROW pin/alum cap
- 3 - Set PK Nail top end CMP
- 4 - Set PK Nail top end CMP

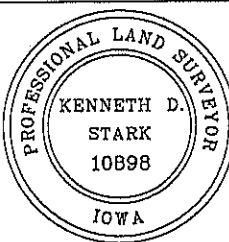
- ▲ - Survey Mark Nail/IDOT Sec. Cor. washer
- 1 - Found IDOT Brass Benchmark
- 2 - Set Hinge nail top 1st Guard rail post
- 3 - Set #5 Rebar/PPC 8'+/- East of Guard rail
- 4 - Set #5 Rebar/PPC 22.5'+/- East of Guard rail
- 5 - Set Hinge nail top 1st Guard rail post

List Corners to be Indexed

Corner	Section	Township	Range
NW CORNER	13	94N	12W
N ¹ / ₄ CORNER	13	94N	12W

PPC = Pink Plastic Cap
CMP = Corrugated Metal Pipe

I hereby certify that this land surveying document was prepared and the related survey work was performed by me or under my personal supervision and that I am duly licensed Land Surveyor under the laws of the state of Iowa.
Kenneth D. Stark 04-05-10
Kenneth D. Stark Date
License number 10898
My License renewal date is December 31, 2017 /
Pages or sheets covered by this seal. _____



drawn by: cjs 01/16
tied by: ms. cs
right-of-way

UNITED STATES PUBLIC LAND SURVEY CORNER CERTIFICATE

OF

Land Survey Monuments situated in Section 13¹², Township 94N, Range 12W
of the Fifth Principal Meridian, CHICKASAW County, Iowa.

Previously recorded in Doc. No. 02020 - Doc. No. 00857 in County Recorder's Office.
(book, page, document number, etc.)

(Show reason for preparing this certificate, the evidence and detailed procedures used in establishing the corner positions and monumentation found or placed.)

Monument Description and Remarks: NW CORNER: Replaced previously found Nail stem 5" deep in ACC with a Survey Mark Nail/IDOT Sec. Cor. washer, 1.75'+/- South of US 18 per previous cert of record Doc. No. 02020 after HMA resurfacing project NHSX-018-7(62)--3H-19.

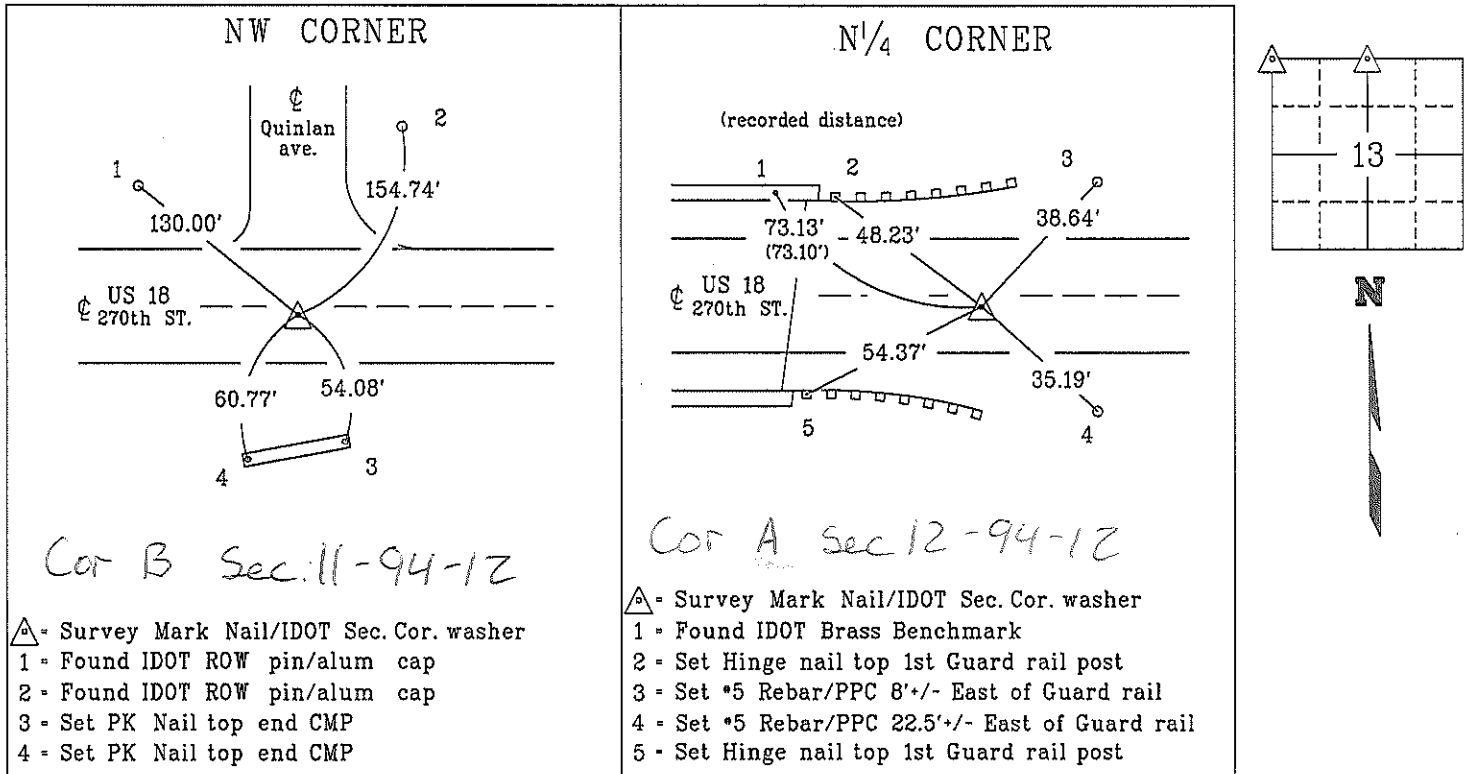
Reason for cert: Monumentation and ties have changed.

N¹/₄ CORNER: Replaced previously found P-K Nail with a Survey Mark Nail/IDOT Sec. Cor. washer, 4.35'+/- South of US 18 per previous cert of record Doc. No. 00857 after HMA resurfacing project NHSX-018-7(62)--3H-19.

Reason for cert: Monumentation and ties have changed.

PLAN - VIEW

(Show a minimum of three reference ties to durable physical objects, relevant monuments and physical conditions that will enable recovery of the corner.)



List Corners to be Indexed

Corner	Section	Township	Range
NW CORNER	13	94N	12W
N ¹ / ₄ CORNER	13	94N	12W
PPC - Pink Plastic Cap			
CMP - Corrugated Metal Pipe			

PROFESSIONAL LAND SURVEYOR

KENNETH D. STARK

10898

IOWA

I hereby certify that this land surveying document was prepared and the related survey work was performed by me or under my personal supervision and that I am duly licensed Land Surveyor under the laws of the state of Iowa.

Kenneth D. Stark 03-18-16

Kenneth D. Stark Date

License number 10898

My License renewal date is December 31, 2017

Pages or sheets covered by this seal. 1

drawn by: cis 01/16

Section 12-94-12
 As referred to in
 Engg. Title Book

SLSI 9-90

UNITED STATES PUBLIC LAND SURVEY CORNER CERTIFICATE

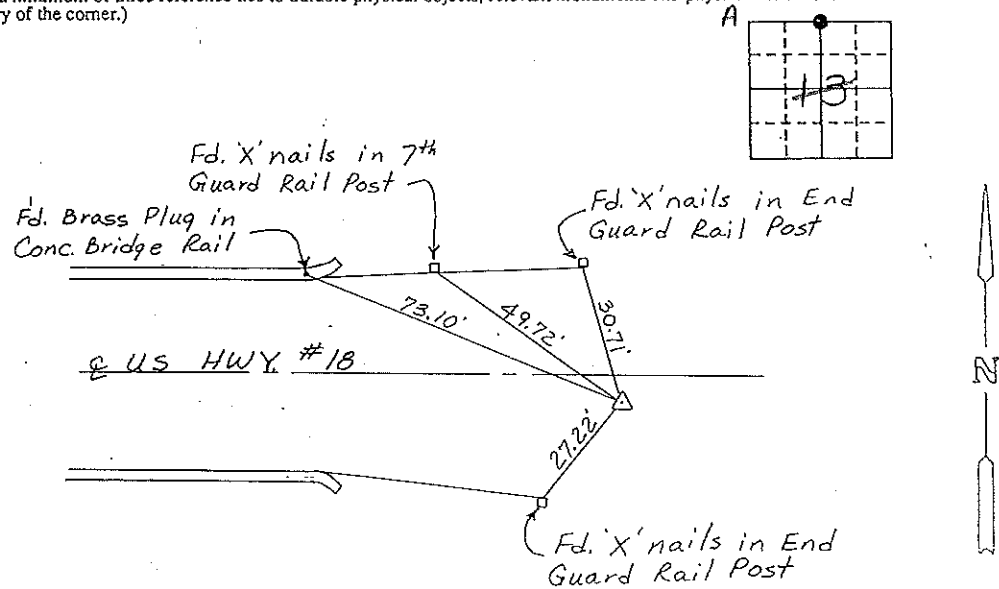
OF 12
 Land Survey Monuments situated in Section 13, Township 94 N, Range 12 W, of the Fifth Principal Meridian, CHICKASAW County, Iowa.
 Previously recorded in (NONE) in County Recorder's Office.
(book, page, document number, etc.)

(Show reason for preparing this certificate, the evidence and detailed procedures used in establishing the corner positions and monumentation found or placed.)

Monument Description and Remarks: N 1/4 CORNER, SECTION 13-T94N-R12W:
FOUND AND SHOT IDOT CAP IN ASPHALT ON 3-16-90, CAP WAS GONE - SET 'PK' NAIL FROM EXISTING COORDINATES, FELL IN THE CENTER OF EXISTING 4" Ø HOLE IN ASPHALT.

PLAN - VIEW

(Show a minimum of three reference ties to durable physical objects, relevant monuments and physical conditions that will enable recovery of the corner.)



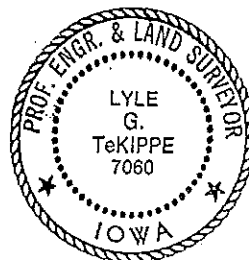
Cor A
 12-94-12

N 1/4 CORNER, SECTION 13-T94N-R12W

I hereby certify that the survey work was completed and this certificate was prepared by me or under my direct personal supervision and that I am a duly registered land surveyor under the laws of the state of Iowa.

Signature: Lyle G. TeKippe
 Name typed or printed: Lyle G. TeKippe
 Date: 9-25-92 Reg. No. 7060

Corners	Section	Twp	Range
N 1/4	13	94N	12W



SEAL

Place in Title Book 10/92