

FILED 2005-0817  
 RECORDER'S OFFICE  
 CHICKASAW COUNTY, IOWA  
 2005 MAY 4 AM 10 07  
 CINDY MESSERSMITH  
 COUNTY RECORDER

TeKIPPE ENGINEERING, P.C., 128 South Vine Street, West Union, Iowa 52175 Phone (663) 422-5131  
 UNITED STATES PUBLIC LAND SURVEY CORNER CERTIFICATE

OF  
 Land Survey Monuments situated in Section 13, Township 94 North, Range 12 West of the Fifth Principal Meridian, CHICKASAW County, Iowa.  
 Previously recorded in none in County Recorder's Office.  
 (book, page, document number, etc.)

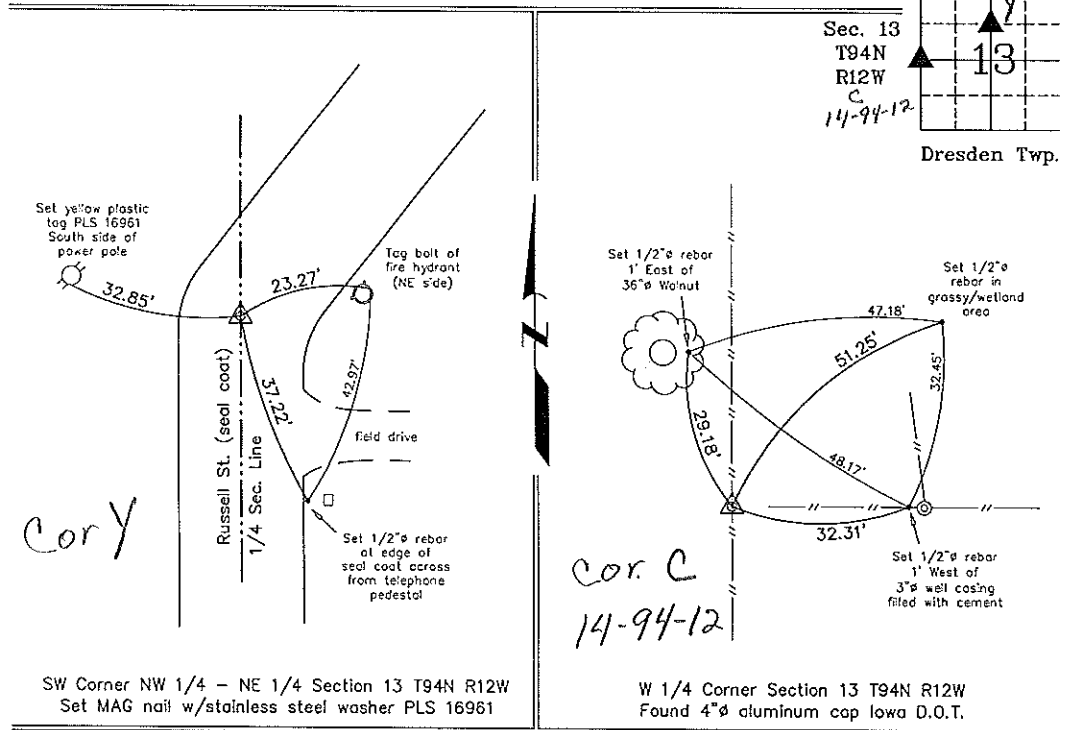
(Show reason for preparing this certificate, the evidence and detailed procedures used in establishing the corner positions and monumentation found or placed.)

Monument Description and Remarks: SW Corner NW 1/4 - NE 1/4 Section 13 T94N R12W: Set MAG nail w/stainless steel washer PLS 16961 equidistant and on line between the N 1/4 Corner and the Center of the Section.

W 1/4 Corner Section 13 T94N R12W: Found 4" aluminum cap Iowa D.O.T. with information obtained from the Chickasaw County Engineer's Office in Dresden Twp. Corner Ties, Section 14, Corner 'C'.

PLAN - VIEW

(Show a minimum of three reference ties to durable physical objects, relevant monuments and physical conditions that will enable recovery of the corner.)



I hereby certify that this land surveying document was prepared and the related survey work was performed by me or under my direct personal supervision and that I am a duly licensed Land Surveyor under the laws of the State of Iowa.  
 Michael J. Shimak May 3, 2005  
 Michael J. Shimak Date  
 License number 16961  
 My license renewal date is December 31, 2005.  
 Sheets covered by this seal: Individual

| List Corners to be Indexed |         |      |       |
|----------------------------|---------|------|-------|
| Corners                    | Section | Twp. | Range |
| SW-NW-NE                   | 13      | 94N  | 12W   |
| W 1/4                      | 13      | 94N  | 12W   |

Project Number 05057.LS  
 FB, Fredericksburg #1 PG. 9-11  
 X:\Section Corners\Sec. 13\13-94-12hk.dwg