

TeKIPPE ENGINEERING, P.C., 128 South Vine Street, West Union, Iowa 52175 Phone (563) 422-5131

UNITED STATES PUBLIC LAND SURVEY CORNER CERTIFICATE

OF

Land Survey Monuments situated in Section 13, Township 94 North, Range 12 West of the Fifth Principal Meridian, CHICKASAW County, Iowa.
 Previously recorded in none in County Recorder's Office.
(book, page, document number, etc.)

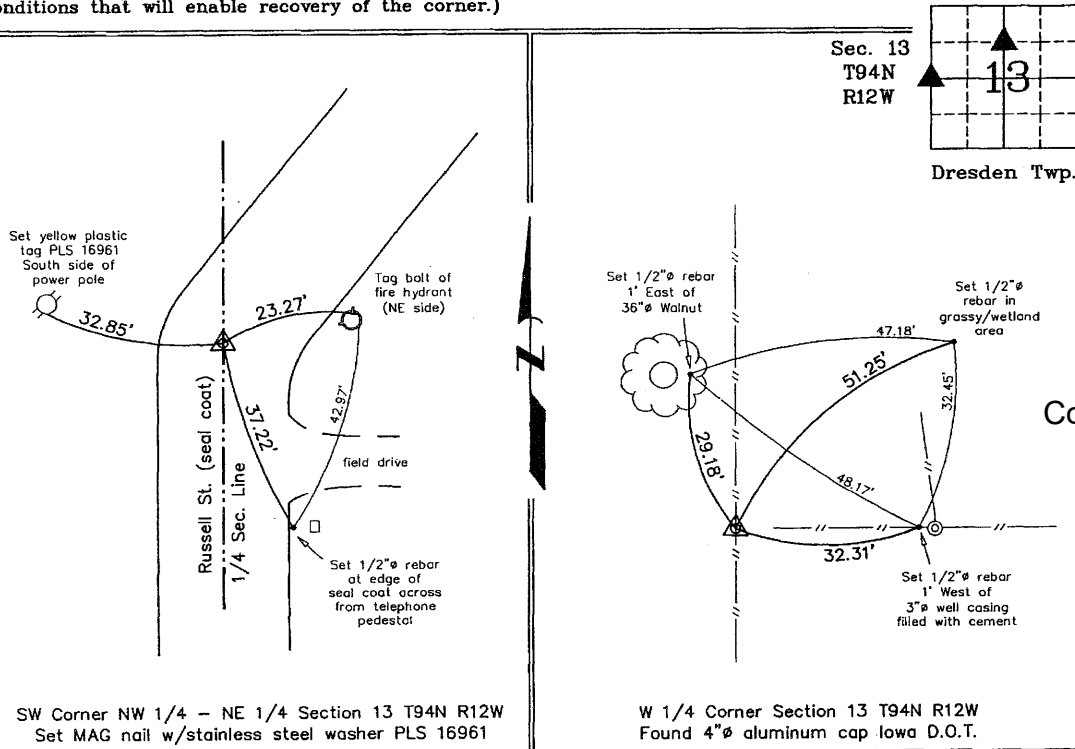
(Show reason for preparing this certificate, the evidence and detailed procedures used in establishing the corner positions and monumentation found or placed.)

Monument Description and Remarks: SW Corner NW 1/4 - NE 1/4 Section 13 T94N R12W: Set MAG nail w/stainless steel washer PLS 16961 equidistant and on line between the N 1/4 Corner and the Center of the Section.

W 1/4 Corner Section 13 T94N R12W: Found 4"Ø aluminum cap Iowa D.O.T. with information obtained from the Chickasaw County Engineer's Office in Dresden Twp. Corner Ties, Section 14, Corner 'C'.

PLAN - VIEW

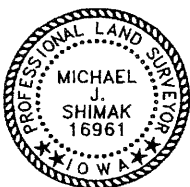
(Show a minimum of three reference ties to durable physical objects, relevant monuments and physical conditions that will enable recovery of the corner.)



SW Corner NW 1/4 - NE 1/4 Section 13 T94N R12W
 Set MAG nail w/stainless steel washer PLS 16961

W 1/4 Corner Section 13 T94N R12W
 Found 4"Ø aluminum cap Iowa D.O.T.

Cor. C 14-94-12



I hereby certify that this land surveying document was prepared and the related survey work was performed by me or under my direct personal supervision and that I am a duly licensed Land Surveyor under the laws of the State of Iowa.

Michael J. Shimak May 3, 2005
 Michael J. Shimak Date

License number 16961
 My license renewal date is December 31, 2005.
 Sheets covered by this seal: Individual

List Corners to be Indexed

Corners	Section	Twp.	Range
SW-NW-NE	13	94N	12W
W 1/4	13	94N	12W

Project Number 05057.1S
 FB, Fredericksburg #1 PG. 9-11

X:\Section Corners\Sec. 13\13-94-12hk.dwg