

UNITED STATES PUBLIC LAND SURVEY CORNER CERTIFICATE

OF

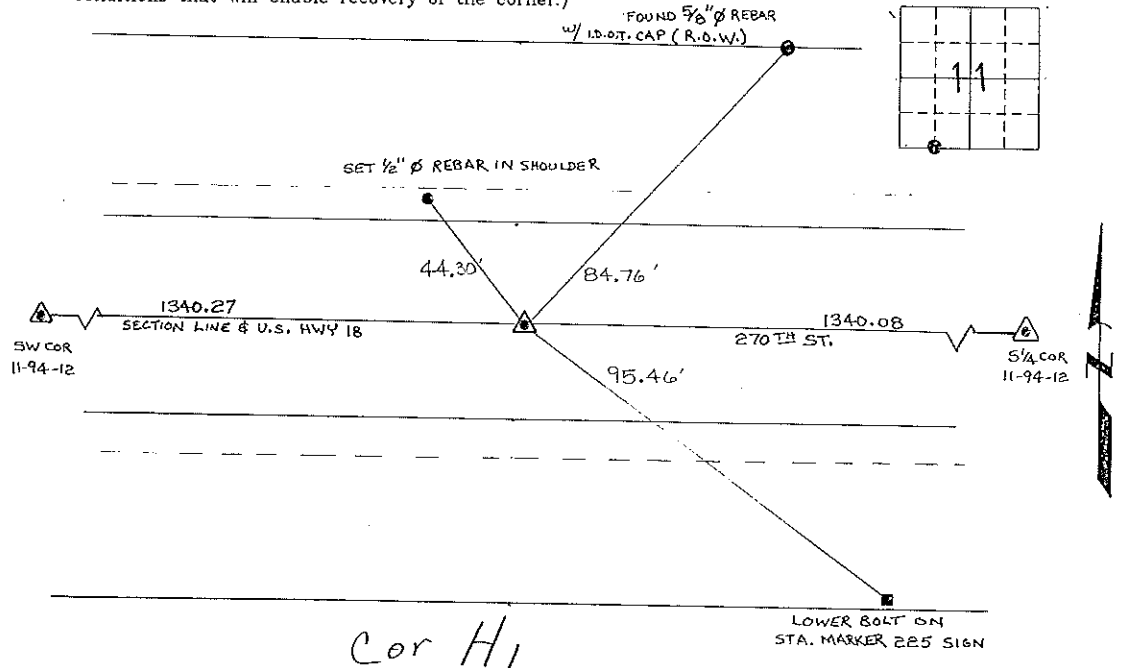
Land Survey Monuments situated in Section 11, Township 94 North, Range 12 West, of the Fifth Principal Meridian, CHICKASAW County, Iowa. Previously recorded in NONE in County Recorder's Office.
(book, page, document number, etc)

(Show reason for preparing this certificate, the evidence and detailed procedures used in establishing the corner positions and monumentation found or placed.)

Monument Description and Remarks: SE CORNER SW 1/4-SW 1/4 SECTION 11 T 94 N R 12 W
FOUND HINGE NAIL ON LINE AND WITHIN 0.19 OF BEING EQUIDISTANT BETWEEN THE SW CORNER AND THE S 1/4 CORNER

PLAN - VIEW

(Show a minimum of three reference ties to durable physical objects, relevant monuments and physical conditions that will enable recovery of the corner.)



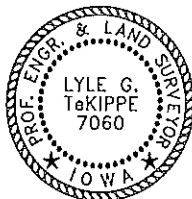
Cor H1

SE CORNER SW 1/4-SW 1/4 11-94-12

I hereby certify that the survey work was completed and this certificate was prepared by me or under my direct personal supervision and that I am a duly registered land surveyor under the laws of the state of Iowa.

Signature: *Lyle G. TeKippe*
 Lyle G. TeKippe
 Date: 9-1-95 Reg. No. 7060
 My Registration Renewal Date is December 31, 1996

Seal



List Corners to be Indexed			
Corners	Section	Twp.	Range
SE COR SW-SW	11	94 N	12 W

Corner H; 11-94-12

Placed in tie box 9/8/95

"County Engineer's Copy"