

DOCUMENT No. 00006 FILED FOR RECORD THE 9th DAY OF October 1995 AT 10:30 P.M. STATE OF IOWA, CHICKASAW COUNTY.  
 RECORDING FEE \$ 6.00 O'CLOCK A.M. BOOK 159 Deed PAGE 9 By Leitha N. Ross Recorder  
 TRANSFER FEE \$          Deputy

UNITED STATES PUBLIC LAND SURVEY CORNER CERTIFICATE

OF

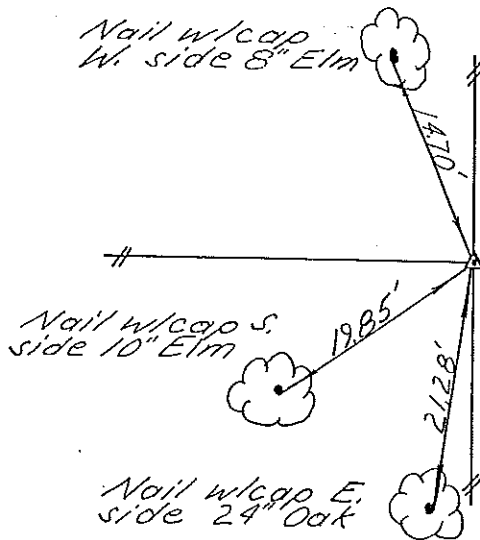
Land Survey Monuments situated in Section 15, Township 24 N, Range 12 W, of the Fifth Principal Meridian, Chickasaw County, Iowa. Previously recorded in does not apply in County Recorders Office.  
 (book, page, document number, etc.)

(Show reason for preparing this certificate, the evidence and detailed procedures used in establishing the corner positions and monumentation found or placed.)

Monument Description and Remarks: This certificate is prepared in accordance with Section 355.11 of the 1995 Code of Iowa. No previous certificate has been filed for this corner location. We set a 1/2" bar with cap RLS #11442 at the existing fence corner. Property line fences from this corner ran North, South, and West.

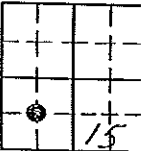
PLAN - VIEW

(Show a minimum of three reference ties to durable physical objects, relevant monuments and physical conditions that will enable recovery of the corner.)



SW 1/4 Set 1/2" bar w/cap at old Cor. Post

Cor. I



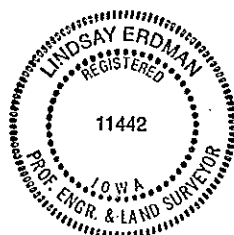
I hereby certify that the survey work was completed and this certificate was prepared by me or under by direct personal supervision and that I am duly registered land surveyor under the laws of the State of Iowa.

Signature: Lindsay Erdman  
 Lindsay Erdman, P.E. & L.S.

Date: 10/6/95 Reg. No. 11442

My license will be renewed January 1, 1997.

SEAL



Corners	Section	Twp.	Range.
SW 1/4	15	24	12

Cor. I 15-24-12

Place in the book 10/10/95