

# UNITED STATES PUBLIC LAND SURVEY CORNER CERTIFICATE

## OF

Land Survey Monuments situated in Section 15<sup>9</sup>, Township 94N, Range 12W of the Fifth Principal Meridian, CHICKASAW County, Iowa.

Previously recorded in Book 170, Page 114 - Book 162, Page 283 in County Recorder's Office.  
(book, page, document number, etc.)

(Show reason for preparing this certificate, the evidence and detailed procedures used in establishing the corner positions and monumentation found or placed.)

Monument Description and Remarks: NW CORNER: Replaced previously found Lead Plug with a Survey Mark Nail/IDOT Sec. Cor. washer, 2.65'+/- South of US 18 per previous cert of record Book 170, Page 114 after HMA resurfacing project NHSX-018-7(62)--3H-19.

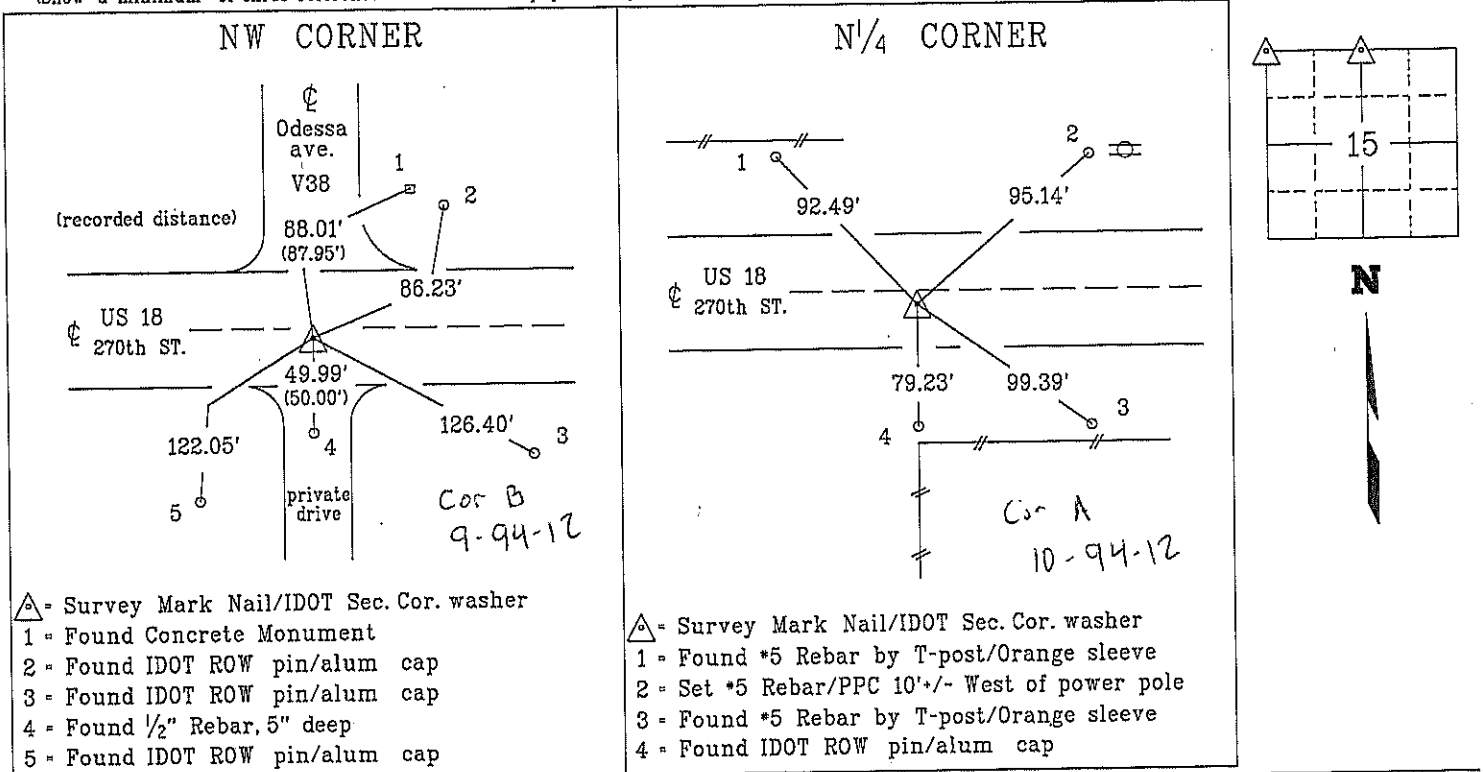
Reason for cert: Monumentation and ties have changed.

N<sup>1</sup>/<sub>4</sub> CORNER: Replaced previously found IDOT Alum Disc with a Survey Mark Nail/IDOT Sec. Cor. washer, 1.6'+/- South of US 18 per previous cert of record Book 162, Page 283 after HMA resurfacing project NHSX-018-7(62)--3H-19.

Reason for cert: Monumentation and ties have changed.

### PLAN - VIEW

(Show a minimum of three reference ties to durable physical objects, relevant monuments and physical conditions that will enable recovery of the corner.)



- △ = Survey Mark Nail/IDOT Sec. Cor. washer
- 1 = Found Concrete Monument
- 2 = Found IDOT ROW pin/alum cap
- 3 = Found IDOT ROW pin/alum cap
- 4 = Found 1/2" Rebar, 5" deep
- 5 = Found IDOT ROW pin/alum cap

- △ = Survey Mark Nail/IDOT Sec. Cor. washer
- 1 = Found #5 Rebar by T-post/Orange sleeve
- 2 = Set #5 Rebar/PPC 10'+/- West of power pole
- 3 = Found #5 Rebar by T-post/Orange sleeve
- 4 = Found IDOT ROW pin/alum cap

#### List Corners to be Indexed

Corner	Section	Township	Range
NW CORNER	15	94N	12W
N <sup>1</sup> / <sub>4</sub> CORNER	15	94N	12W

PPC = Pink Plastic Cap

PROFESSIONAL LAND SURVEYOR

KENNETH D. STARK

10898

IOWA

I hereby certify that this land surveying document was prepared and the related survey work was performed by me or under my personal supervision and that I am duly licensed Land Surveyor under the laws of the state of Iowa.

*Kenneth D. Stark* 09-05-16  
Kenneth D. Stark Date  
License number 10898  
My License renewal date is December 31, 2017  
Pages or sheets covered by this seal. 1

drawn by: cis 02/16

# UNITED STATES PUBLIC LAND SURVEY CORNER CERTIFICATE OF

Land Survey Monuments situated in Section 15<sup>9</sup>, Township 94N, Range 12W  
of the Fifth Principal Meridian, CHICKASAW County, Iowa.

Previously recorded in Doc. No. 01538 - Doc. No. 00981 in County Recorder's Office.  
(book, page, document number, etc.)

(Show reason for preparing this certificate, the evidence and detailed procedures used in establishing the corner positions and monumentation found or placed.)

Monument Description and Remarks: NW CORNER: Replaced previously found Lead Plug with a Survey Mark Nail/IDOT Sec. Cor. washer, 2.65'+/- South of US 18 per previous cert of record Doc. No. 01538 after HMA resurfacing project NHSX-018-7(62)--3H-19.

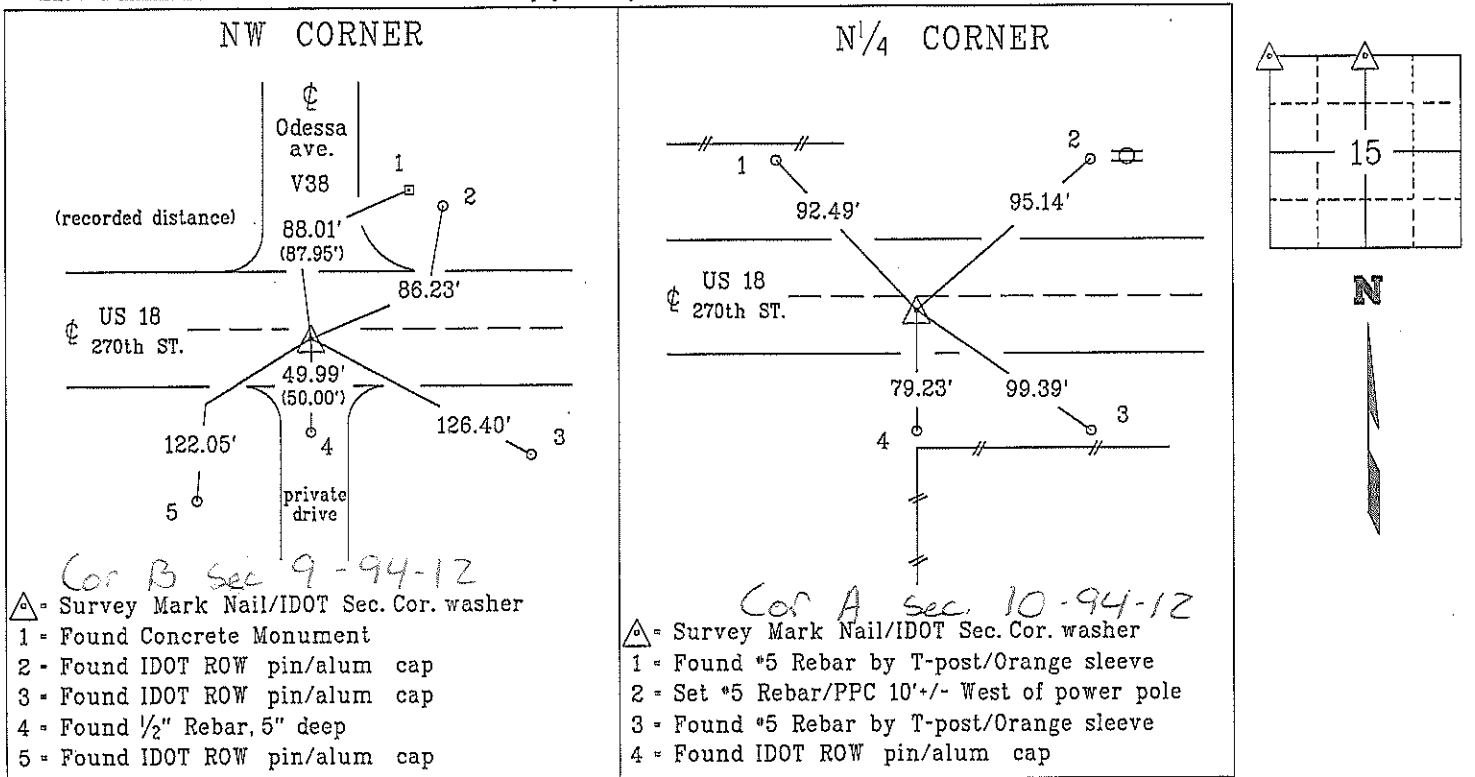
Reason for cert: Monumentation and ties have changed.

N<sup>1</sup>/<sub>4</sub> CORNER: Replaced previously found IDOT Alum Disc with a Survey Mark Nail/IDOT Sec. Cor. washer, 1.6'+/- South of US 18 per previous cert of record Doc. No. 00981 after HMA resurfacing project NHSX-018-7(62)--3H-19.

Reason for cert: Monumentation and ties have changed.

### PLAN - VIEW

(Show a minimum of three reference ties to durable physical objects, relevant monuments and physical conditions that will enable recovery of the corner.)



**PROFESSIONAL LAND SURVEYOR**  
KENNETH D. STARK  
10898  
IOWA

I hereby certify that this land surveying document was prepared and the related survey work was performed by me or under my personal supervision and that I am duly licensed Land Surveyor under the laws of the state of Iowa.

*Kenneth D. Stark*  
Kenneth D. Stark  
License number 10898  
My License renewal date is December 31, 2017  
Pages or sheets covered by this seal. 1

List Corners to be Indexed			
Corner	Section	Township	Range
NW CORNER	15	94N	12W
N <sup>1</sup> / <sub>4</sub> CORNER	15	94N	12W

PPC = Pink Plastic Cap

drawn by: cis 02/16

00981

DOCUMENT No. 00981 FILED FOR RECORD THE 4th DAY OF November, 1996 AT 8:58 O'CLOCK A.M. BOOK 162 DEED PAGE 283 STATE OF IOWA, CHICKASAW COUNTY. By Keith W. Ross, LEITHA N. ROSS, Recorder Deputy

Prepared by: Erdman Engineering P.C. 708 Commerce Drive, P.O. Box 246, Decorah Iowa, 52101 Phone (319)382-4194, Fax (319)382-3623

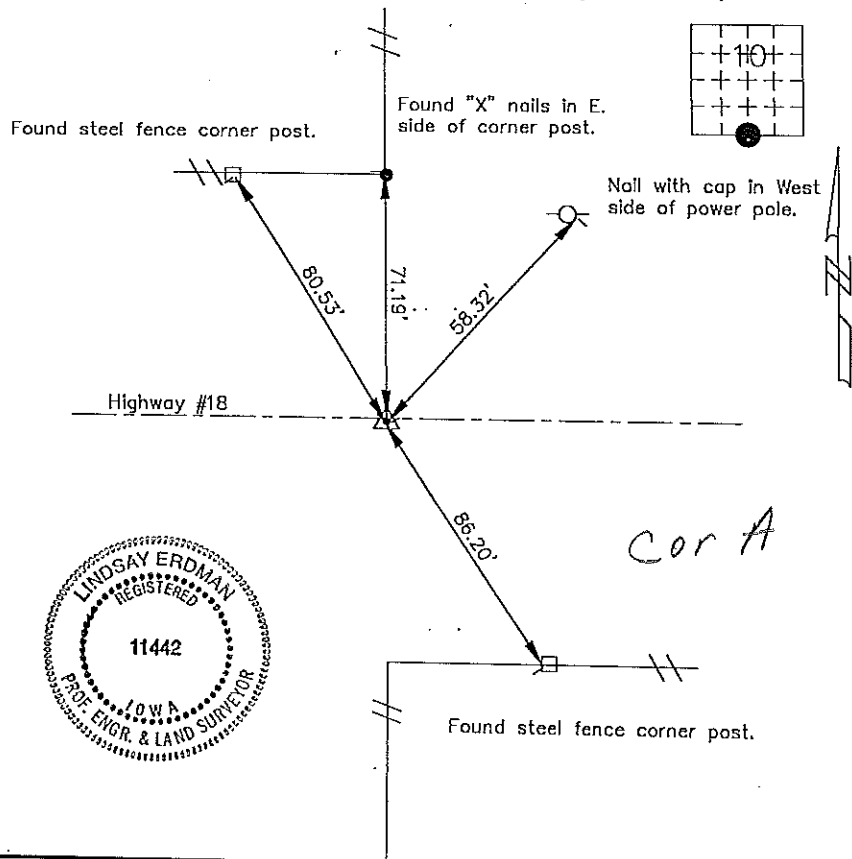
United States Public Land Survey Corner Certificate of

Land Survey Monuments situated in Section 10 Township 94 Range 12 of the Fifth Principle Meridian, Chickasaw County, Iowa. Previously recorded in does not apply in County Recorders Office.

(Show reason for preparing this certificate, the evidence and detailed procedures used in establishing the corner positions and monumentation found or placed.)

Monument Description and Remarks: This certificate is prepared in accordance with Section 355.11 of the 1995 Code of Iowa. No previous certificate has been filed for this corner location. Based on County Engineer's Reference Ties we found two steel posts and one set of "X" nails used as tie markers. From these ties we found a Standard DOT Aluminum Core Monument at the S 1/4 corner of Section 10-94-12.

Plan-View (Show a minimum of three reference ties to durable physical objects, relevant monuments and physical conditions that will enable recovery of the corner.)



I hereby certify that the survey work was completed and this certificate was prepared by me or under by direct supervision and that I am a duly registered land surveyor under the laws of the State of Iowa.

Signature Lindsay Erdman, P.E. and L.S. Date: 10/17/96 Reg. No. 11442

My license will be renewed January 1, 1997

List Corners to be Indexed

Corners	Section	Twp.	Range
S 1/4	10	94	12

as per 18154 10-3-98

BOOK PAGE 162-283