

PREPARED BY / RETURN TO: KENNETH D. STARK IOWA DEPARTMENT OF TRANSPORTATION 428 43rd ST. SW MASON CITY, IA 50401 641-423-7684

UNITED STATES PUBLIC LAND SURVEY CORNER CERTIFICATE

OF

Land Survey Monuments situated in Section 14, Township 94N, Range 12W
 of the Fifth Principal Meridian, CHICKASAW County, Iowa.

Previously recorded in Fee Book 2006-1891 in County Recorder's Office.
(book, page, document number, etc.)

(Show reason for preparing this certificate, the evidence and detailed procedures used in establishing the corner positions and monumentation found or placed.)

Monument Description and Remarks: NW CORNER: Replaced previously found Mag Nail/SSW *15525 with a Survey Mark Nail/IDOT Sec. Cor. washer, 1.8' +/- North of US 18 per previous cert of record Fee Book 2006-1891 after HMA resurfacing project NHSX-018-7(62)--3H-19.

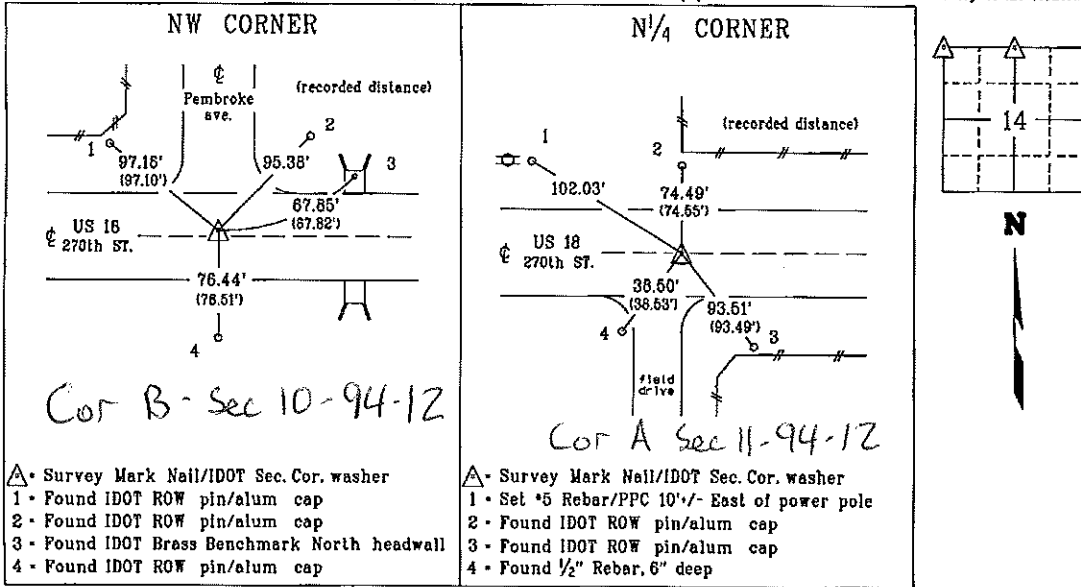
Reason for cert: Monumentation and ties have changed.

N/4 CORNER: Replaced previously found Hinge Nail with a Survey Mark Nail/IDOT Sec. Cor. washer, on US 18 per previous cert of record Fee Book 2006-1891 after HMA resurfacing project NHSX-018-7(62)--3H-19.

Reason for cert: Monumentation and ties have changed.

PLAN - VIEW

(Show a minimum of three reference ties to durable physical objects, relevant monuments and physical conditions that will enable recovery of the corner.)



I hereby certify that this land surveying document was prepared and the related survey work was performed by me or under my personal supervision and that I am duly licensed Land Surveyor under the laws of the state of Iowa.

Kenneth D. Stark 03-14-16
 Kenneth D. Stark Date
 License number: 10998
 My License renewal date is December 31, 2017
 Pages or sheets covered by this seal: 1

List Corners to be indexed

Corner	Section	Township	Range
NW CORNER	14	94N	12W
N/4 CORNER	14	94N	12W

PPC - Pink Plastic Cap

drawn by: als 01/16

2006-1891
9/11/2006

Section 10-94-12
As referred to in
Eng. T.C. Book

TeKIPPE ENGINEERING, P.C., 128 South Vine Street, West Union, Iowa 52175 Phone (563) 422-6131

UNITED STATES PUBLIC LAND SURVEY CORNER CERTIFICATE

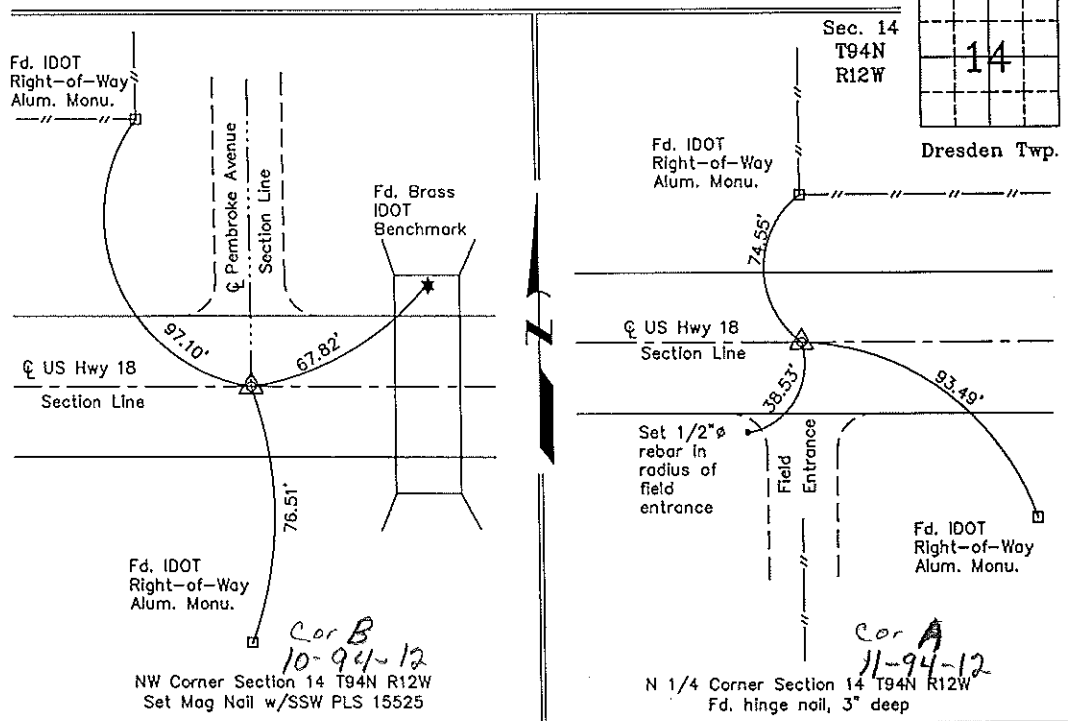
OF 10
Land Survey Monuments situated in Section 14, Township 94 North, Range 12 West of the Fifth Principal Meridian, Chickasaw County, Iowa.
Previously recorded in Book 156, Page 235 in County Recorder's Office.
(book, page, document number, etc.)

(Show reason for preparing this certificate, the evidence and detailed procedures used in establishing the corner positions and monumentation found or placed.)

Monument Description and Remarks: NW Corner Section 14 T94N R12W: Set Mag Nail w/SSW PLS 15525 from ties from previous Section Corner Certificates.
N 1/4 Corner Section 14 T94N R12W: Found hinge nail, 3" deep in HMA material.
Previous corner ties were missing.

PLAN - VIEW

(Show a minimum of three reference ties to durable physical objects, relevant monuments and physical conditions that will enable recovery of the corner.)



I hereby certify that this land surveying document was prepared and the related survey work was performed by me or under my direct personal supervision and that I am a duly licensed Land Surveyor under the laws of the State of Iowa.
Paul R. Herold 9-8-06
Paul R. Herold Date
License number 15525
My license renewal date is December 31, 2006.
Sheets covered by this seal: Individual

List Corners to be Indexed			
Corners	Section	Twp.	Range
NW	14	94N	12W
N 1/4	14	94N	12W

Project Number 06207.LS
FE P-Burg 1, PGS. 21-22
X:\Section Corners\Sec. 14\14-94-12ac.dwg

Section 10-94-12
 As referred to in
 Engr. Tree Book

UNITED STATES PUBLIC LAND SURVEY CORNER CERTIFICATE

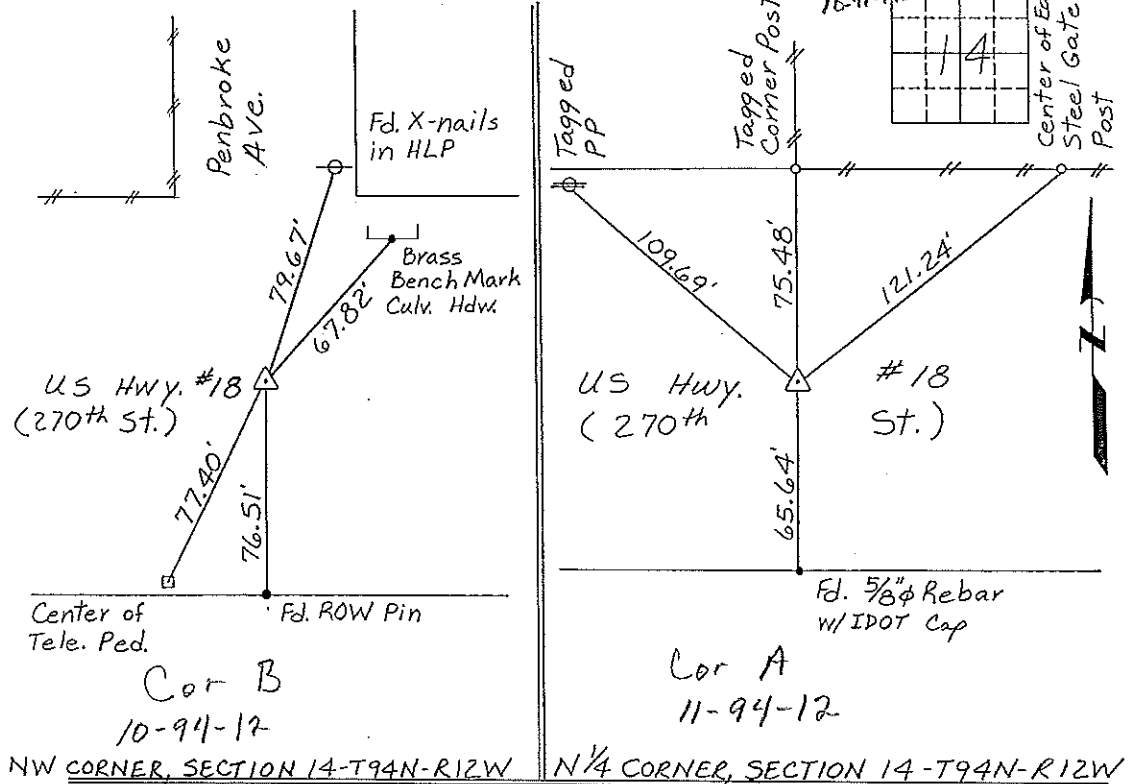
OF 10
 Land Survey Monuments situated in Section 14, Township 94 North, Range 12 West, of the Fifth Principal Meridian, CHICKASAW County, Iowa.
 Previously recorded in NONE in County Recorder's Office.
(book page, document number, etc.)

(Show reason for preparing this certificate, the evidence and detailed procedures used in establishing the corner positions and monumentation found or placed.)

Monument Description and Remarks: NW CORNER, SECTION 14-T94N-R12W: Set Nail in Asphalt Patch from Ties.
N 1/4 CORNER, SECTION 14-T94N-R12W: Set Nail in Asphalt Patch from Ties.

PLAN - VIEW

(Show a minimum of three reference ties to durable physical objects, relevant monuments and physical conditions that will enable recovery of the corner.)



I hereby certify that the survey work was completed and this certificate was prepared by me or under my direct personal supervision and that I am a duly registered land surveyor under the laws of the state of Iowa.

Signature: Gary L. Casady
 Gary L. Casady
 Date: 11-2-94 Reg. No. 12532
 My Registration Renewal Date is December 31, 1994

Seal



List Corners to be Indexed			
Corners	Section	Twp.	Range
NW	14	94N	12W
N 1/4	14	94N	12W
		Corner B	10-94-12
		Corner A	11-94-12

Placed in the
 Book 11/94